

REPORT OF COMPLETED WORKS - SEACOAST FORTIFICATIONS  
(Batteries)

SECRET

HARBOR DEFENSES OF PUGET SOUND  
FORT EBEL, WASHINGTON

BATTERY 248  
Caliber: 6"

No. of Guns: 2  
Carriage: Barbette

Part I Corrected to 22 March 1944

GENERAL:		UTILITIES:	
Battery commenced	18 May 1942	<u>ELECTRIC POWER</u>	
Battery completed	1 February 1944	Sources of	Ordnance Power Plant and Commercial
Date of transfer	22 March 1944	Procured and installed by	Ordnance and OCE
Cost to date of transfer	\$349,000	Characteristics (Pr. Pl.)	Voltage 440, AC, 3-phase
Materials of construction	Reinforced concrete	No. of units and capacity	3 - 125 Generating Units,
Battery new or modernized	New	Max. K.W. required for utilities	50
Trunnion elevation of Gun #1	215.0 ft.	Max. K.W. required for non-battle conditions	12
Trunnion elevation of Gun #2	215.0 ft.	Commercial power provided	Yes 45 KVA (2300 V overhead)
datum plane	Mean Sea Level	Auxiliary power unit provided	No
<u>UTILITIES:</u>		Type of lighting fixtures	Commercial
<u>WATER SUPPLY</u>		Dehumidifying unit	None
Sources of	Cantorment wall, 100,000 gal. elevated wood stave water tank.	Rooms wet or dry	Dry
Alternate source	None	How ventilated	Vents and gas proofing in Plotting Room and Latrine
Size of main	6" transite pipe	How Heated	3 - 2000 W. Electric Heaters (C.E.) (in Plotting Room)
<u>SEWER</u>		<u>DATA TRANSMISSION</u>	
Connected to sewer	Yes	Type	Telephone (S.C. Equipment)
Type of disposal	Septic tank		
Type of latrine	Commercial fixture (syphon)		

## AFNAMEKT

Emplacement No.	Cal.	Length	Model	Guns		When mounted	Carriages				
				Serial No.	Manufacturer		Type	Model	Serial No.	Manufacturer	Motor
1	6"	26.0'	1905A2	13	Waterliet	1943	Barbette	M 1	#54	York Corp.	10 HP 440 Volt
2	6"	26.0'	1905A2	17	Waterliet	1943	Barbette	M 1	#55	York Corp.	10 HP 440 Volt

SECRET

Proc Card 5 F.C. 785645

600914 (P, 50 1) 72923

SPEKM-1

REPORT OF COMPLETED WORKS - SEACOAST FORTIFICATIONS  
(Batteries)

SECRET

HARIXR DEFENSORS OF PUGET SOUND  
FORT EBEL, WASHINGTON  
BATTERY 248  
Caliber: 6"

No. of Guns: 2  
Carriage: Barbette

Part I Corrected to 22 March 1944

GENERAL:

Battery commenced	18 May 1942
Battery completed	1 February 1944
Date of transfer	22 March 1944
Cost to date of transfer	\$349,000
Materials of construction	Reinforced concrete
Battery new or modernized	New
Trunnion elevation of Gun #1	215.0 ft.
Trunnion elevation of Gun #2	215.0 ft.
Datum plane	Mean Sea Level

UTILITIES:

WATER SUPPLY

Source of	Cantoneast well, 100,000 gal. elevated wood stave water tank.
Alternate source	None
Size of main	6" transite pipe

SEWER

Connected to sewer	Yes
Type of disposal	Septic tank
Type of latrine	Commercial fixture (syphon)

UTILITIES:

ELECTRIC POWER

Sources of	Ordnance Power Plant and Commercial
Procured and installed by	Ordnance and OCS
Characteristics (Pr. Pl.)	Voltage 440, AC, 3-phase
No. of units and capacity	3 - 125 Generating Units,
Max. K.W. required for utilities	50
Max. K.W. required for non-battle conditions	12
Commercial power provided	Yes 45 KVA (2300 V overhead)
Auxiliary power unit provided	No
Type of lighting fixtures	Commercial
Dehumidifying unit	None
Rooms wet or dry	Dry
How ventilated	Vents and gas proofing in Plotting Room and Latrine
How Heated	3 - 2000 W. Electric Heaters (G.E.) (in Plotting Room)

DATA TRANSMISSION

Type	Telephone (S.C. Equipment)
------	----------------------------

ARMAMENT

Emplacement No.	Cal.	Length	Model	Guns		When mounted	Carriages				
				Serial No.	Manufacturer		Type	Model	Serial No.	Manufacturer	Motor
1	6"	26.0'	1905A2	13	Watervliet	1943	Barbette	M 1	#54	York Corp.	10 HP 440 Volt
2	6"	26.0'	1905A2	17	Watervliet	1943	Barbette	M 1	#55	York Corp.	10 HP 440 Volt

Im 1/13

Part 2 of 5

SECRET

DECLASSIFIED PER EXECUTIVE ORDER 12356, SECTION 3.3, NND PROJECT  
NUMBER NND735036, BY RB/MB, DATE 8-4-94

ADDITIONS OR ALTERATIONS

F. Y. 1945 · Installed 49 prison type cots in casemate corridors.

\$ 1,300

REPORT OF COMPLETED WORKS-SEACOAST FORTIFICATIONS  
(Battery Plan)

HARBOR DEFENSES OF PUGET SOUND  
FORT EBEL, WASHINGTON

BATTERY 248

FORM 7.

Corrected to 22 March, 1944

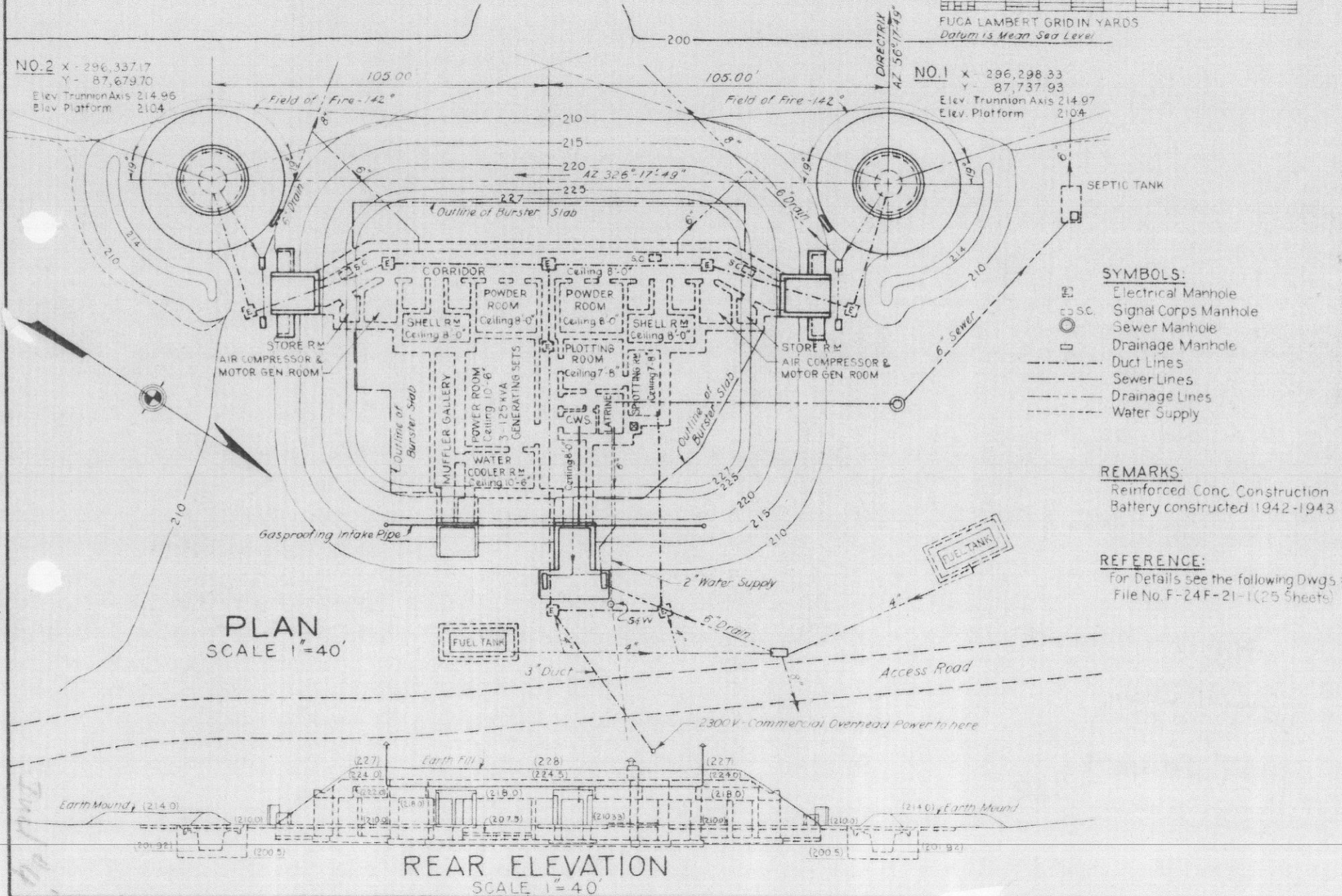
Scale 1" = 40'

10 0 10 20 30 40 50 60 70 80 90 100 FEET

FUCA LAMBERT GRID IN YARDS  
Datum is Mean Sea Level

NO. 2 X - 296,337.17  
Y - 87,679.70  
Elev. Trunnion Axis 214.96  
Elev. Platform 210.4

NO. 1 X - 296,298.33  
Y - 87,737.93  
Elev. Trunnion Axis 214.97  
Elev. Platform 210.4



REPORT OF COMPLETED WORKS - SEACOAST FORTIFICATIONS  
(Battery Plan)

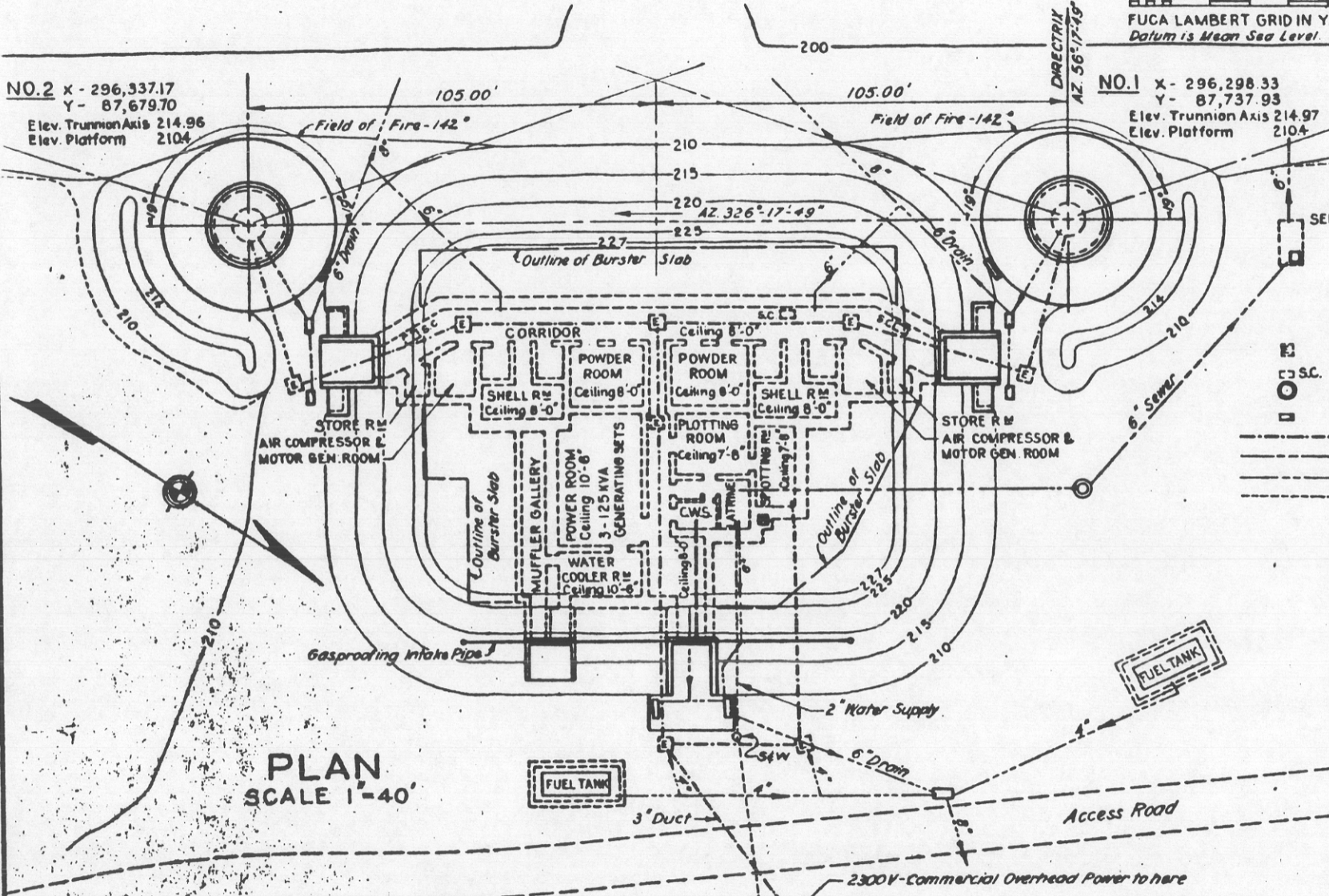
SECRET

HARBOR DEFENSES OF PUGET SOUND  
FORT EBEL, WASHINGTON  
BATTERY 248

FORM 7.

Corrected to 22 March, 1944

Scale 1" = 40'



**SYMBOLS:**

- Electrical Manhole
- Signal Corps Manhole
- Sewer Manhole
- Drainage Manhole
- Duct Lines
- Sewer Lines
- Drainage Lines
- Water Supply

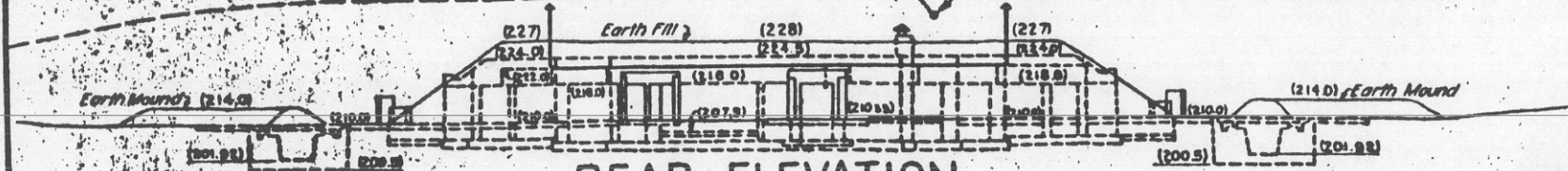
**REMARKS:**

Reinforced Conc. Construction  
Battery constructed 1942-1943

**REFERENCE:**

For Details see the following Dwgs  
File No. F-24F-21-1 (25 Sheets)

**PLAN**  
SCALE 1" = 40'



**REAR ELEVATION**  
SCALE 1" = 40'

SECRET

600.914 (Pug Ld) 104180

**SECRET**REPORT OF COMPLETED WORKS - SEACOAST FORTIFICATIONS  
(Batteries)HARBOR DEFENSES OF PUGET SOUND  
FORT EBEL, WASHINGTON  
BATTERY 248  
Caliber: 6"

SPEKM-1

Part I Corrected to 7 August 1944

No. of Guns: 2  
Carriage: BarbetteGENERAL:

Battery commenced 18 May 1942  
 Battery completed **104180** 1 February 1944  
 Date of transfer 22 March 1944  
 Cost to date of transfer \$349,000  
 Materials of construction Reinforced concrete  
 Battery new or modernized New  
 Trunnion elevation of Gun #1 215.0 ft.  
 Trunnion elevation of Gun #2 215.0 ft.  
 Datum plane Mean Sea Level

UTILITIES:WATER SUPPLY  
Source ofCantonment well, 100,000  
gal. elevated wood stave  
water tank.Alternate source  
Size of mainNone  
6" transite pipeSEWERConnected to sewer  
Type of disposal  
Type of latrineYes  
Septic tank  
Commercial fixture  
(siphon)UTILITIES: (cont'd)ELECTRIC POWER

Sources of Ordnance Power Plant and  
Commercial  
 Procured and installed by Ordnance and OCE  
 Characteristics (Pr. Pl.) Voltage 440, AC, 3-phase  
 No. of units and capacity 3 - 125 Generating Units  
 Max. K.W. Required for  
utilities 50  
 Max. K.W. required for  
non-battle conditions 12  
 Commercial power provided Yes 45 KVA (2300 V overhead)  
 Auxiliary power unit  
provided No  
 Type of lighting fixtures Commercial  
 Dehumidifying unit None  
 Rooms wet or dry Dry  
 How ventilated Vents and gas proofing in  
Plotting Room and Latrine  
 How heated 3 - 2000 W. Electric Heaters  
(G.E.) (in Plotting Room)  
 DATA TRANSMISSION  
 Type System M5 (Ordnance) and  
Telephone (S.C. Equipment)

## ARMAMENT

Emplacement No.	Cal.	Length	Model	Guns		When Mounted	Carriages				
				Serial No.	Manufacturer		Type	Model	Serial No.	Manufacturer	Motor
1	6"	26.0'	1905A2	13	Watervliet	1943	Barbette	M 1	54	York Corp.	10 HP 440 V
2	6"	26.0'	1905A2	17	Watervliet	1943	Barbette	M 1	55	York Corp.	10 HP 440 V

(over)

**SECRET**

SECRET

SPEKM-1

REPORT OF COMPLETED WORKS - SEACOAST FORTIFICATIONS  
(Batteries)

HARBOR DEFENSES OF PUGET SOUND  
FOR EBEL, WASHINGTON  
BATTERY 248  
Caliber: 6"

No. of Guns: 2  
Carriages: Barbette

Part I Corrected to 27 February 1945

GENERAL:

127030

Battery commenced 18 May 1942  
 Battery completed 1 February 1944  
 Date of transfer 22 March 1944  
 Cost to date of transfer \$349,000  
 Materials of construction Reinforced concrete  
 Battery new or modernized New  
 Munnion elevation of Gun #1 215.0 ft.  
 Munnion elevation of Gun #2 215.0 ft.  
 Datum plane Mean sea level

UTILITIES:

WATER SUPPLY

Source of

Alternate source  
Size of main

SEWER

Connected to sewer  
Type of disposal  
Type of latrine

Cantonment well, 100,000  
gal. elevated wood stave  
water tank.  
None  
6" transite pipe  
Yes  
Septic tank  
Commercial fixture  
(syphon)

UTILITIES: (Cont'd)

ELECTRIC POWER

Source of

Procured and installed by  
Characteristics (Pr. Pl.)  
No. of units and capacity  
Max. K.W. Required for  
utilities  
Max. K.W. required for  
non-battle conditions  
Commercial power provided  
Auxiliary power unit  
provided  
Type of lighting fixtures  
Dehumidifying unit  
Rooms wet or dry  
How ventilated

How heated

DATA TRANSMISSION

Type

Ordnance Power Plant and  
Commercial  
Ordnance and OCE  
Voltage 440, AC, 3-phase  
3 - 125 Generating Units

50

12

Yes 45 KVA (2300 V overhead)

No

Commercial

None

Dry

Vents and gas proofing in  
Plotting Room and Latrine  
3 - 2000 W Electric Heaters  
(G.E.) (in plotting Room)

System M5 (Ordnance) and  
Telephone (S.C. Equipment)

ARMAMENT

Emplacement No.	Cal.	Length	Model	Guns		When Mounted	Type	Carriages		Motor	
				Serial No.	Manufacturer			Model	Serial No.		Manufacturer
1	6"	26.0'	1905A2	13	Watervliet	1943	Barbette	M1	54	York Corp.	10 HP 440 V
2	6"	26.0'	1905A2	17	Watervliet	1943	Barbette	M1	55	York Corps	10 HP 440 V

- OVER -

SECRET

2nd #7

F. Y. 1945 Installed 49 prison type cots in casemate corridors. \$ 1,300

F. Y. 1945 Installation of Blackout Lights \$ 300

RECEIVED  
OFFICE OF THE  
COMMISSIONER  
OF THE GENERAL  
LAND OFFICE  
STATE OF CALIFORNIA  
SAN FRANCISCO  
APR 10 1945

OFFICE OF THE  
COMMISSIONER  
OF THE GENERAL  
LAND OFFICE  
STATE OF CALIFORNIA  
SAN FRANCISCO  
APR 10 1945  
0209





DECLASSIFIED PER EXECUTIVE ORDER 12356, SECTION 3.3, NND PROJECT  
NUMBER NND735036, BY RB/MB, DATE 8-4-94

Additions or Alterations

F.Y. 1944: Structure wired for lights, power shelter constructed - \$1,380

OFFICE DIVISION ENGINEER  
PACIFIC DIVISION  
AUG 8 1944 - 11:30 AM  
SAN FRANCISCO, CALIFORNIA

3400

by Hogue

SPEKM-1

REPORT OF COMPLETED WORKS - SEACOAST FORTIFICATIONS  
(Fire Control or Submarine Mine Structures)

HARBOR DEFENSES OF PUGET SOUND  
FORT: EBEBY, WASHINGTON  
STRUCTURE: B<sup>5</sup> S<sup>5</sup><sub>2</sub> (#248)

Part II Corrected to

STRUCTURE:  
 Location, by coords. 5 x 299,083.01 yds.) Fuca  
 2 y 96,828.37 yds.) Grid  
 Location, by site Swantown  
 Date of transfer  
 Cost to that date  
 Type Semi-splinterproof, dug-in  
 with rear entrance  
 Type of construction  
 (a) Roof Reinforced concrete  
 (b) Remainder of bldg. Reinforced concrete  
 How concealed Set in ground and covered  
 with earth  
 How protected Splinterproof walls and  
 roof  
 Height above concealment 6 ft.  
 Height above protection 2 ft.  
 Conspicuous at 500 yds.

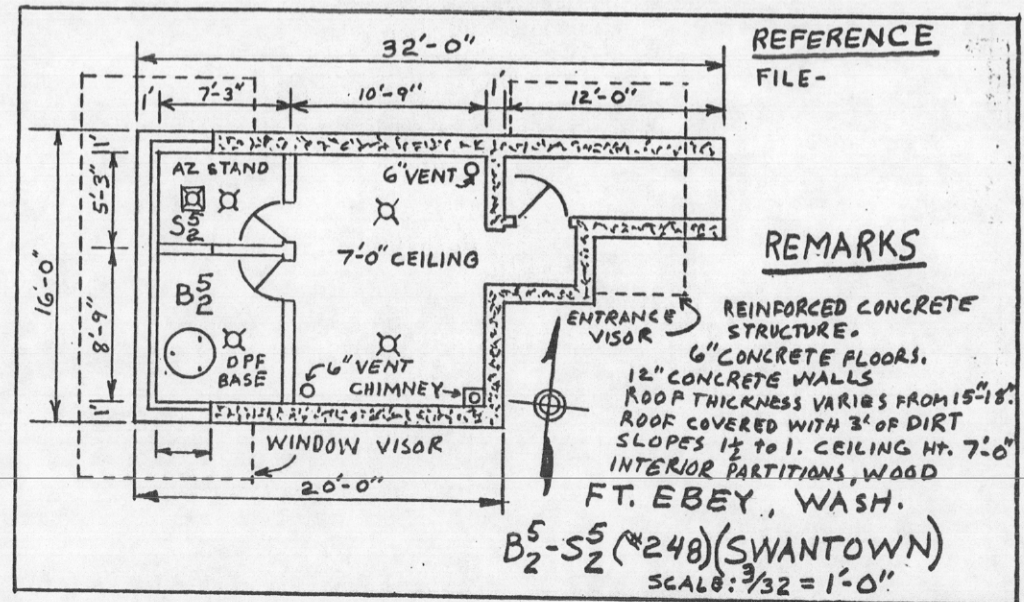
REFERENCE:  
 Reference of site 213.8 ft. M.S.L.  
 Reference of axis B<sup>5</sup> -  
 S<sup>5</sup> -  
 S<sub>2</sub> -

INSTRUMENTS & EQUIPMENT  
 Type of observing inst. M 1 - DPF and Az.

DATA TRANSMISSION:  
 Type Telephone, S.C. Equipment  
 Date of transfer

REMARKS: Located at site 2, SWANTOWN U. S. Military  
 Reservation. Access road begins on county road  
 No. 265 west of OAK HARBOR, is 12' wide by 150'  
 long, gravel surfaced.

UTILITIES:  
 Electric Power  
 Source of  
 Characteristics  
 Kilowatts required  
 Type of lighting fixtures Commercial  
 Heat  
 How heated Combination coal-wood  
 heater  
 Water & Sewer  
 Connected to water mains No  
 Connected to sewer No  
 Type of latrine None



(over)

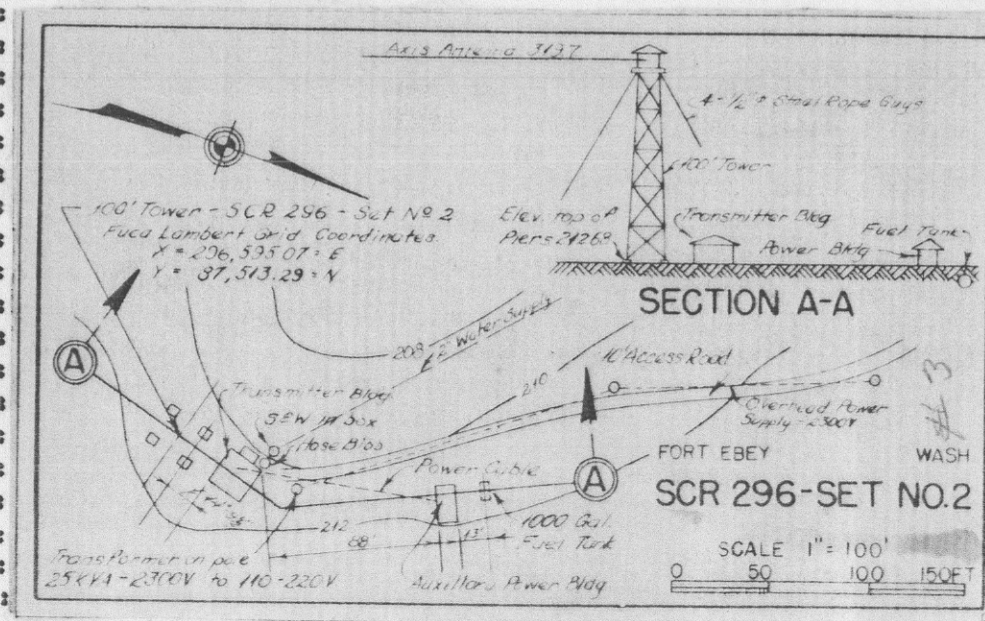
REPORT OF COMPLETED WORKS - SEACOAST FORTIFICATIONS  
(Fire Control or Torpedo Structures)

HARBOR DEFENSES OF PUGET SOUND  
FORT EBEBY, WASHINGTON  
STRUCTURE SCR 296, No. 2  
(Partridge Point)  
for Btry. #248

Form 2. Corrected to 20 September 1943

SECRET

STRUCTURE:	:	: Present condition	: Excellent
Location:	: Fort Ebey	: REFERENCE:	:
Center of tower (Fuca Grid Coord.)	: X 296,595.07 yds : Y 87,513.29 yds	: Reference of site	: M.S.L.
	:	: Reference of antenna axis	: 319.7
Date of transfer	: 30 August 1943	: INSTRUMENTS AND EQUIPMENT:	:
Cost to that date	: \$14,300	: Type of	: S.C. Radar equipment
T of construction	:	:	:
(a) Tower	: Prefabricated 100' steel : tower on conc. piers	: DATA TRANSMISSION:	:
(b) Transmitter bldg.	: Prefabricated steel frame on : conc. footings & floors	: Type of	: Telephone
(c) Auxiliary power bldg.	: Prefabricated steel frame on : conc. footings & floors	: Date of transfer	: 20 September 1943
How concealed	: Among and under trees	: Cost of data transmission : equipment	: Not known (S.C. Equipment)
How protected	: Not protected	:	:
Height above concealment	:	:	:
(a) Tower	: 20 ft.	:	:
(b) Transmitter	: Entirely under trees	:	:
(c) Auxiliary power bldg.	: Entirely under trees	:	:
Height above protection	: Not protected	:	:
Conspicuous at	: 3000 yds	:	:
ELECTRIC CURRENT:	:	:	:
Source of	: Commercial overhead : Power Supply : Auxiliary power plant	:	:
Kilowatts required	: 15 KVA	:	:
Type of lighting fixtures	: Commercial	:	:
HEAT:	:	:	:
How heated	: Electric heater	:	:
WATER & SEWER:	:	:	:
Connected to water main	: 2" line to battery supply	:	:
Connected to sewer	: No	:	:
Type of latrine	: None	:	:
Permanent or temporary inst.	: Permanent	:	:



FS-218 Proj Card 1



600,914 (Sight Sound) 64027  
 REPORT OF COMPLETED WORKS - SPACCAST WORKING STATION  
 (Fire Control or Torpedo Structures)

NAVY DEPARTMENT OFFICE OF THE CHIEF OF BUREAU  
 WASHINGTON, D.C.  
 FORM NO. 102 01/2 01/2 2-3  
 64027

Form 2. Connected to July 16, 1943

**SECRET**

<b>STRUCTURE:</b>	:	<b>INSTRUMENTS AND EQUIPMENT:</b>	:
Location	:	Type of observing inst.	:
Fuca Grid Coord. (D1/2)	:	Type of plotting board	:
	:		:
	:	<b>DATA TRANSMISSION:</b>	:
	:	Type of	:
Date of transfer	:		:
Cost to that date	:		:
Type of construction	:	Date of transfer	:
(a) Roof	:	Cost of data transmission equip.	:
(b) Remainder of bldg.	:		:
How concealed	:		:
	:		:
How protected	:		:
	:		:
Height above concealment	:		:
Height above protection	:		:
Conspicuous at . . . .	:		:

**ELECTRIC CURRENT:**

Source of : Commercial

Kilowatts required : .5

Type of lighting fixtures : Commercial

**HEAT:**

How heated : Combination coal-wood heater

**WATER & SEWER:**

Connected to water mains : No

Connected to sewer : No

Type of latrine : None

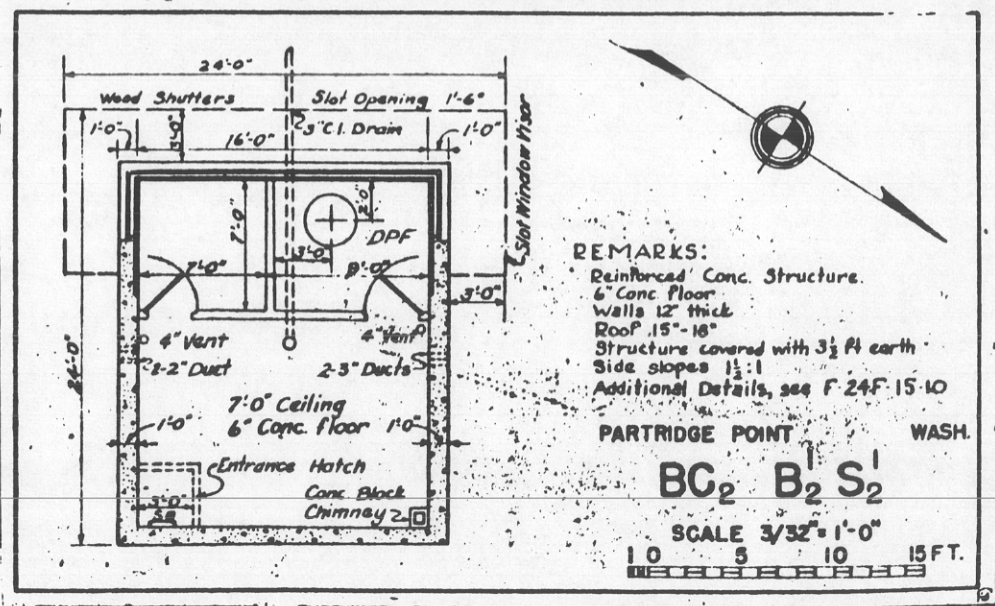
Permanent or temporary inst'n : Permanent

Present condition : Excellent

**REFERENCE:**

Reference of site : Mean Sea Level

Reference of instrument axis : 180.4 feet



**REMARKS:**

Reinforced Conc. Structure.

6" Conc. floor

Walls 12" thick

Roof 15"-18"

Structure covered with 3 1/2 ft earth

Side slopes 1 1/2:1

Additional Details, see F 24F 15-10

PARTRIDGE POINT WASH.

BC<sub>2</sub> B<sub>2</sub> S<sub>2</sub>

SCALE 3/32" = 1'-0"

10 5 10 15 FT.

FS-714 371 Proj. Com. 155

**SECRET**

REPORT OF COMPLETED WORKS - SEACOAST FORTIFICATIONS  
(Fire Control or Submarine Mine Structures)

HARBOR DEFENSES OF PUGET SOUND  
FORT: EBEBY, WASHINGTON  
STRUCTURE: BC-2, B<sub>2</sub><sup>1</sup> S<sub>2</sub><sup>1</sup> (#248)

Part II Corrected to

STRUCTURE:  
Location, by coords. B<sub>2</sub><sup>1</sup> x 296,234.16 yds.) Fuca  
y 87,654.02 yds.) Grid  
BC<sub>2</sub> x 296,235.73 yds.)  
y 87,651.67 yds.)  
Location, by site 300 ft. west of Gun No.1  
Battery 248  
Date of transfer  
Cost to that date  
Type Semi-splinterproof, dug-in  
with manhole entrance  
Type of construction  
(a) Roof Reinforced concrete  
(b) Remainder of bldg. Reinforced concrete  
How concealed Set in ground and covered  
with earth  
How protected Splinterproof walls and  
roof  
Height above concealment 6 ft.  
Height above protection 2 ft.  
Conspicuous at 500 yds.

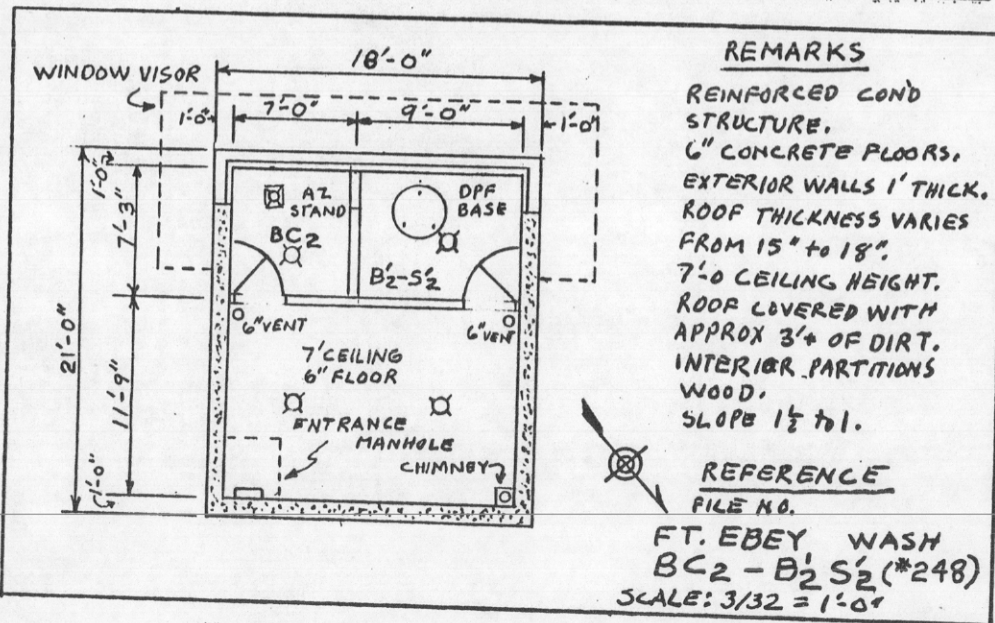
REFERENCE:  
Reference of site 180.4 ft. M.S.L.  
Reference of axis B<sub>2</sub><sup>1</sup> S<sub>2</sub><sup>1</sup> -  
BC-2 -

INSTRUMENTS & EQUIPMENT:  
Type of observing inst. M 1 - DPF and Az.

DATA TRANSMISSION:  
Type Telephone, S.C. equipment  
Date of transfer

REMARKS: Located at Ft. Ebey U. S. Military Reservation  
300 ft. in front of Btry 248.

UTILITIES:  
Electric Power  
Source of Fortification power  
Characteristics 115/230 V, AC, 3  $\phi$   
Kilowatts required 1.0  
Type of lighting fixtures Commercial  
Heat  
How heated Combination coal-wood  
heater  
Water & Sewer  
Connected to water mains No  
Connected to sewer No  
Type of latrine None



(over)

103990

600.914 (PS)

**SECRET**

SPEKM-1

REPORT OF COMPLETED WORKS - SEACOAST FORTIFICATIONS  
(Fire Control or Submarine Mine Structures)HARBOR DEFENSES OF PUGET SOUND  
FORT EBEL, WASHINGTON  
STRUCTURE: B<sub>6</sub><sup>3</sup> S<sub>6</sub><sup>3</sup> (Tolles "B")  
*at Warden*

Part II Corrected to 1 July 1944

**STRUCTURE:** x 295,786.81 yds.) Fuca  
y 88,553.03 yds.) Grid  
Location, by coords. 400' SE of Partridge Pt.  
Location, by site  
Date of transfer 16 July 1943  
Cost to that date \$8,000  
Type Semi-splinterproof, dug-in  
with rear entrance

Type of construction  
(a) Roof Reinforced concrete  
(b) Remainder of bldg. Reinforced concrete  
How concealed Set in ground and covered  
with earth  
How protected Splinterproof walls and  
roof  
Height above concealment 6 ft.  
Height above protection 2 ft.  
Conspicuous at 500 yds.

**REFERENCE:**  
Reference of site 110 ft. M.S.L.  
Reference of axis 112.1 ft. M.S.L.

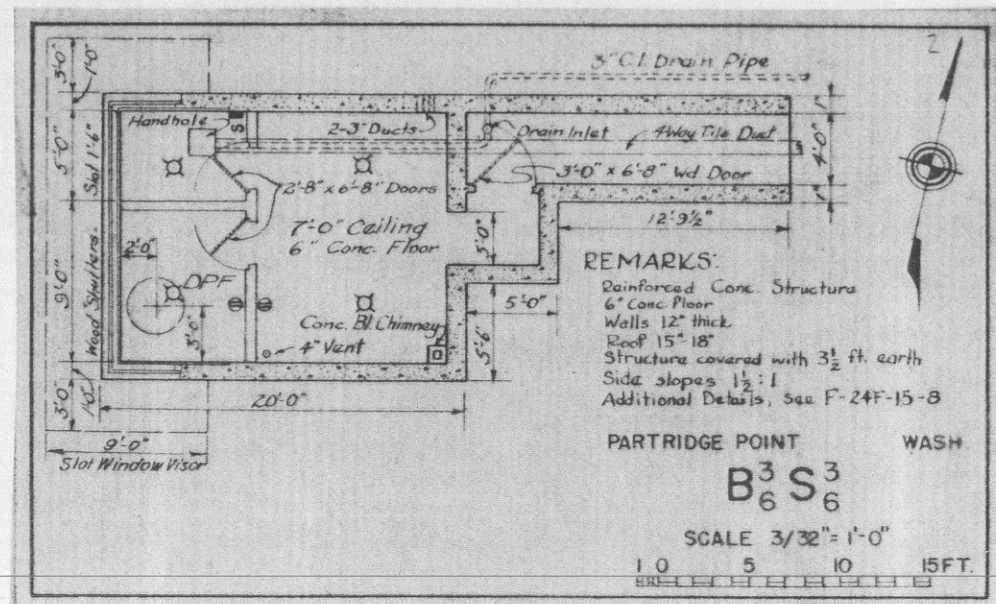
**INSTRUMENTS & EQUIPMENT:**  
Type of observing inst. DPF and AZ. Inst.

**DATA TRANSMISSION:**  
Type Telephone, S.C. equipment  
Date of transfer July 1943

**REMARKS:** 1 - 3 KVA Power Plant housed  
in 8'-8" x 8'-8" Power Shelter,  
wood frame construction on 6"  
concrete floor.

**UTILITIES:**  
Electric Power  
Source of Commercial and 1 - 3 KVA  
generator unit (Ordnance)  
Characteristics Commercial: 115 V, AC, 1 $\phi$   
Aux.: 230/115 V, AC, 3 $\phi$   
Kilowatts required 0.5  
Type of lighting fixtures Commercial  
Heat  
How heated Combination coal-wood  
heater

Water & Sewer  
Connected to water mains No  
Connected to sewer No  
Type of latrine None

(over) **SECRET**



SECRET

SPEKM-1

103990

600.710 (PS)

REPORT OF COMPLETED WORKS - SEACOAST FORTIFICATIONS  
(Fire Control or Submarine Mine Structures)

HARBOR DEFENSES OF PUGET SOUND  
FORT EREY, WASHINGTON  
STRUCTURE: B<sub>6</sub> S<sub>3</sub> (Tolles "B")  
*at Wooden*

Part II Corrected to 1 July 1944

STRUCTURE: x 295,786.81 yds.) Fuca  
y 88,553.03 yds.) Grid

Location by coords. 400' SE of Partridge Pt.

Location, by site 16 July 1943

Date of transfer \$8,000

Cost to that date

Type Semi-splinterproof, dug-in  
with rear entrance

Type of construction

(a) Roof Reinforced concrete

(b) Remainder of bldg. Reinforced concrete

How concealed Set in ground and covered  
with earth

How protected Splinterproof walls and  
roof

Height above concealment 6 ft.

Height above protection 2 ft.

Conspicuous at 500 yds.

REFERENCE:

Reference of site 110 ft. M.S.L.

Reference of axis 112.1 ft. M.S.L.

INSTRUMENTS & EQUIPMENT:

Type of observing inst. DPF and AZ. Inst.

DATA TRANSMISSION:

Type Telephone, S.C. equipment

Date of transfer July 1943

REMARKS: 1 - 3 KVA Power Plant housed  
in 8'-8" x 6'-8" Power Shelter,  
wood frame construction on 6"  
concrete floor.

UTILITIES:

Electric Power  
Source of Commercial and 1 - 3 KVA  
generator unit (Ordnance)

Characteristics Commercial: 115 V, AC, 1Ø  
Aux.: 230/115 V, AC, 3Ø

Kilowatts required 0.5

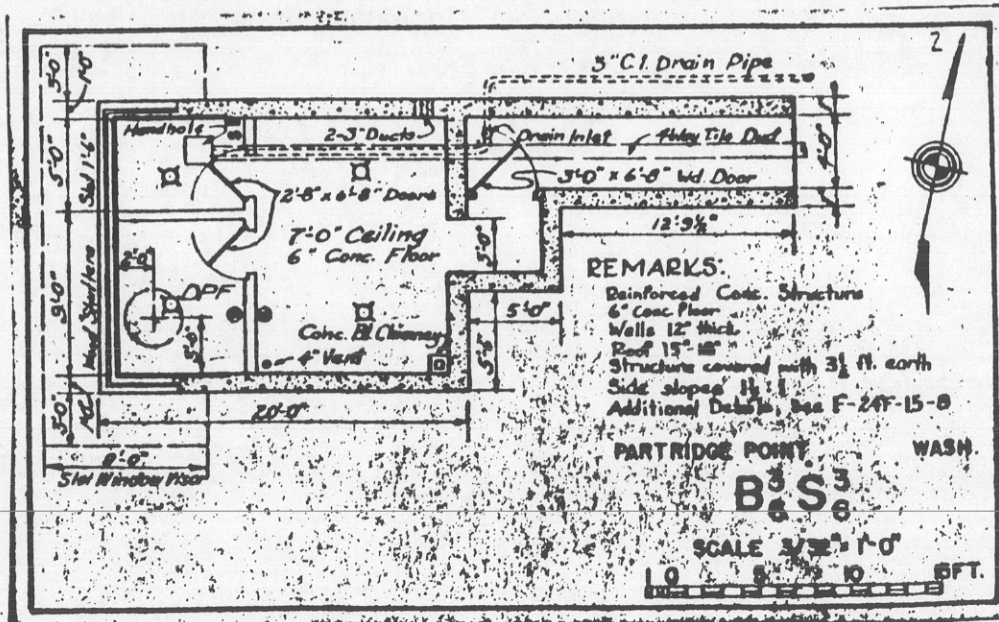
Type of lighting fixtures Commercial

Heat  
How heated Combination coal-wood  
heater

Water & Sewer  
Connected to water mains No

Connected to sewer No

Type of latrine None



FS-370

(over) SECRET

DECLASSIFIED PER EXECUTIVE ORDER \_\_\_\_\_, DATE 8-4-94  
NUMBER NND735036, BY RB/MS

Additions or Alterations

F.Y. 1944: Structure wired for lights, power shelter constructed - \$1,915

OFFICE OF VISUAL ENGINEERING  
PACIFIC DIVISION  
AUG 8 1944 - 11 30 AM  
SAN FRANCISCO CALIFORNIA

3400

by Hope 11/87

SPEKM-1

REPORT OF COMPLETED WORKS SEACOAST FORTIFICATIONS  
(Fire Control or Submarine Mine Structures)

HARBOR DEFENSES OF PUGET SOUND  
FORT: EBEBY, WASHINGTON  
STRUCTURE: B<sub>6</sub><sup>3</sup> S<sub>6</sub><sup>3</sup> (TOLLES - B)

Part II Corrected to

STRUCTURE: 3' x 295,786.81 yds.) Fuca  
 Location, by coords B<sub>6</sub> y 88,553.03 yds.) Grid  
 Location, by site 400' S.E. of Partridge Pt. Light

Date of transfer  
 Cost to that date  
 'type Semi-splinterproof, dug-in with rear entrance

Type of construction  
 (a) Roof Reinforced concrete  
 (b) Remainder of bldg. Reinforced concrete

How concealed Set in ground and covered with earth

How protected Splinterproof walls and roof

Height above concealment 6 ft.  
 Height above protection 2 ft.  
 Conspicuous at 500 yds.

REFERENCE:  
 Reference of site 112.1 ft. M.S.L.  
 Reference of axis B<sub>6</sub><sup>3</sup> S<sub>6</sub><sup>3</sup>

INSTRUMENTS & EQUIPMENT:  
 Type of observing inst. (M1907) DPF and Az.

DATA TRANSMISSION:  
 Type Telephone, S.C. equipment  
 Date of transfer

REMARKS: Located on Ft. Ebey U. S. Military Reservation supplementary station for BATTERY TOLLES - B at FORT WORDEN

UTILITIES:

Electric Power  
 Source of Fortification power and 1 - 3 KVA Generator Unit (Ordnance)

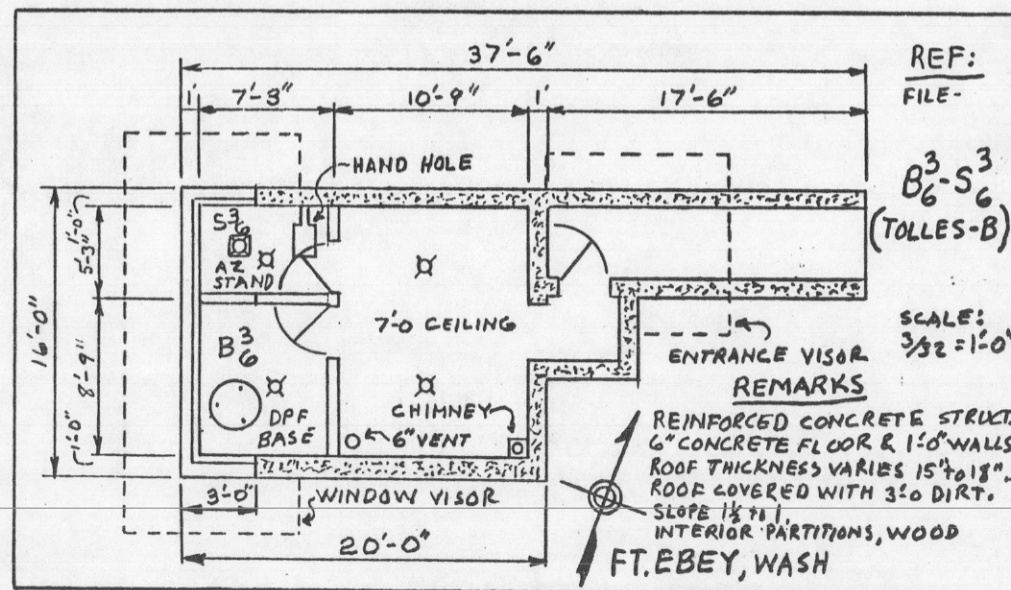
Characteristics 460/230-230/115 V, AC, 1ϕ & 3ϕ

Kilowatts required 1.0

Type of lighting fixtures Commercial

Heat  
 How heated Combination coal-wood heater

Water & Sewer  
 Connected to water mains No  
 Connected to sewer No  
 Type of latrine None



(over)

REPORT OF COMPLETED WORKS - SEACOAST FORTIFICATIONS  
(Fire Control or Submarine Mine Structures)

by Hagge 11/83

HARBOR DEFENSES OF PUGET SOUND  
FORT: **EBEY WASHINGTON**  
STRUCTURE: **B<sub>2</sub><sup>6</sup> S<sub>2</sub><sup>6</sup> (\*248)**

Part II Corrected to

STRUCTURE:

Location, by coords. **B<sub>2</sub><sup>6</sup> X  
y**

FUCA  
GRID

Location, by site

Date of transfer  
Cost to that date  
Type

Type of construction  
(a) Roof  
(b) Remainder of bldg.  
How concealed

How protected

Height above concealment  
Height above protection  
Conspicuous at

UTILITIES:

Electric Power  
Source of  
Characteristics  
Kilowatts required  
Type of lighting fixtures  
Heat  
How heated

Water & Sewer  
Connected to water mains  
Connected to sewer  
Type of latrine

REFERENCE:

Reference of site  
Reference of axis

**B<sub>2</sub><sup>6</sup> S<sub>2</sub><sup>6</sup> -**

INSTRUMENTS & EQUIPMENT:

Type of observing inst.

DATA TRANSMISSION:

Type  
Date of transfer

REMARKS: THIS STATION IS ON THE PLOTTING BOARD, M3, \*58, OF  
BTRY \*248 NOW STORED AT FT. CASEY STATE PARK.  
IT WOULD SEEM THAT THIS STATION IS ON THE SARATOGA  
PASSAGE, EAST OF COUPEVILLE. B<sub>2</sub><sup>6</sup> IS NOT LISTED BY ANY F.C.  
ANNEX KNOWN TO ME (GREG HAGGE, 1986) BUT MAY HAVE BEEN LATER

SET UP BY LOCAL TROOPS, JUST A DATUM POINT TO SET UP  
AN AZ. INSTRUMENT "JUST IN CASE" TO GIVE \*248  
360° FIRE CAPABILITY, AND THE POINT INSTALLED ON  
THE PLOTTING BOARD. THIS "B<sub>2</sub><sup>6</sup> STATION" NEVER BEING  
AN OFFICIAL F.C. SITE.

(over)

600.914 (Pd)

**SECRET**

SPEKM-1

REPORT OF COMPLETED WORKS - SEACOAST FORTIFICATIONS  
(Fire Control or Submarine Mine Structures)

HARBOR DEFENSES OF PUGET SOUND  
FORT EBEL, WASHINGTON  
STRUCTURE: B<sub>2</sub> S<sub>2</sub> (#248)

Part II Corrected to 1 July 1944

STRUCTURE: x 295,792.28 yds.) Fuca  
Location y 89,164.52 yds.) Grid  
Location, by site 1700' N. of Partridge  
Point  
Date of transfer 16 July 1943  
Cost to that date \$8000  
Type Semi-splinterproof, dug-in  
rear entrance

103990

Type of construction  
(a) Roof Reinforced concrete  
(b) Remainder of bldg. Reinforced concrete  
How concealed Set in ground and covered  
with earth  
How protected Splinterproof walls and  
roof  
Height above concealment 6 ft.  
Height above protection 2 ft.  
Conspicuous at 500 yds.

UTILITIES:

Electric Power  
Source of Commercial and 1 - 3 KVA  
Generator Unit (Ordnance)  
Characteristics Commercial: 115 V, AC, 1  $\phi$   
Aux.: 230/115 V, AC, 3  $\phi$   
Kilowatts required 0.5  
Type of lighting fixtures Commercial  
Heat  
How heated Combination coal-wood  
heater

Water & Sewer  
Connected to water mains No  
Connected to sewer No  
Type of latrine None

## REFERENCE:

Reference of site 130 ft. M.S.L.  
Reference of axis 132.4 ft. M.S.L.

## INSTRUMENTS &amp; EQUIPMENT:

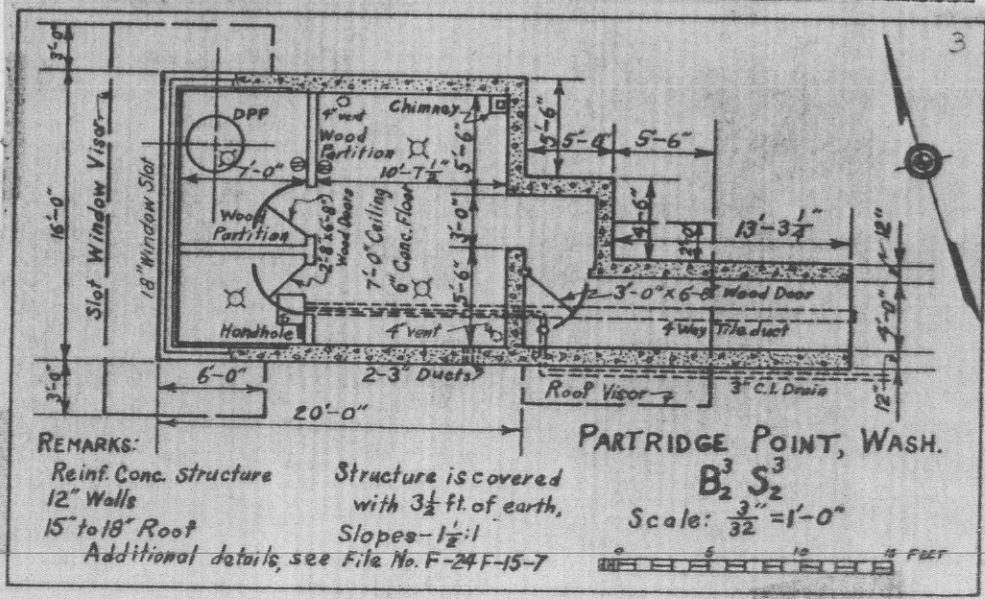
Type of observing inst. DPF M 1 and Az. Inst.

## DATA TRANSMISSION:

Type Telephone, S.C. equipment  
Date of transfer July 1943

## REMARKS:

1 - 3 KVA Power Plant housed  
in 8'-8" x 8'-8" Power Shelter,  
wood frame construction on 6"  
concrete floor

**SECRET**

(Over)

FS-372

by Hogg

SPEKIN-1

REPORT OF COMPLETED WORKS SEACOAST FORTIFICATIONS  
(Fire Control or Submarine Mine Structures)

HARBOR DEFENSES OF PUGET SOUND  
FORT: EBEE, WASHINGTON  
STRUCTURE: B<sub>2</sub> S<sub>2</sub> (#248)

Part II Corrected to

STRUCTURE: B<sub>2</sub><sup>3</sup> x 295,792.28 yds.) Fuca  
 Location, by coords B<sub>2</sub><sup>2</sup> y 89,164.52 yds.) Grid  
 Location, by site 1700 ft. north of Partridge Point Light.

Date of transfer  
 Cost to that date  
 Type Semi-splinterproof, dug-in with rear entrance

Type of construction  
 (a) Roof Reinforced concrete  
 (b) Remainder of bldg. Reinforced concrete

How concealed Set in ground and covered with earth

How protected Splinterproof walls and roof

Height above concealment 6 ft.  
 Height above protection 2 ft.  
 Conspicuous at 500 yds.

UTILITIES:

Electric Power  
 Source of

Characteristics 3φ

Kilowatts required 1.0

Type of lighting fixtures Commercial

Heat  
 How heated Combination coal-wood heater

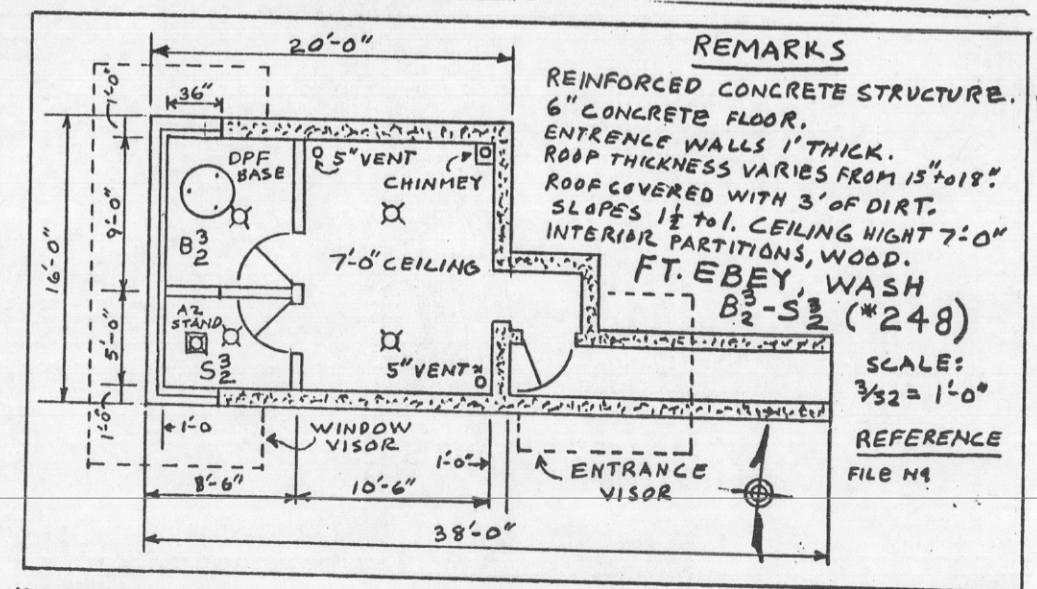
Water & Sewer  
 Connected to water mains No  
 Connected to sewer No  
 Type of latrine None

REFERENCE:  
 Reference of site 132.4 ft. M.S.L.  
 Reference of axis B<sub>2</sub> S<sub>2</sub> —

INSTRUMENTS & EQUIPMENT:  
 Type of observing inst. M 1 - DPF and Az.

DATA TRANSMISSION:  
 Type Telephone, S.C. equipment  
 Date of transfer

REMARKS: Located at north end of Ft. Ebey U. S. Military Reservation. Now (1986) is demolished, has slid over bank, only small parts remain on bluff. Remainder visable on beach.



(over)

600.914 (2nd Ed)

120530

SECRET

SPEKM-1

REPORT OF COMPLETED WORKS - SEACOAST FORTIFICATIONS  
(Searchlights)

HARBOR DEFENSES OF PUGET SOUND  
FORT EBEBY (Swantown), WASHINGTON  
SEARCHLIGHT NUMBER 4  
SIZE: 60" Portable

Part IV Corrected to 27 November 1944

**INSTALLATION:**  
 Location by coordinates x 299,093 yds.) Fuca  
 (Operating position) y 96,901 yds.) Grid  
 Location by site w. side of Whidbey Is.  
 on Swantown Mil. Res.  
 General character Fixed shelter for portable  
 unit.  
 Date transferred to troops 27 November 1944  
 Cost to that date \$ 4,800  
 Shelter (S.L.)  
 Materials of Construction Conc. floor & timber fram-  
 ing.  
 Interior dimensions 12' x 16'-9" (Front semi-  
 octagonal).  
 Height & Type of tower No tower.  
 Means by which projector Projector is stationary,  
 is placed in operating sliding doors on front  
 position. and sides.  
 Reference axis of pro- 209 ft. M.S.L.  
 jector in operating  
 position.  
 Kind of protection in 6" x 2'-0" high conc. wall  
 operating position. at base, timber frame  
 roof . overhead.  
 Concealment of day shel- Shelter is under and among  
 ter from approach chanel. trees.  
 Dates and cost of extensive None  
 remodeling or reconstruction.

**POWER PLANT:**

Location Approx. 250' S. of S.L. shelter  
 Maximum demand 16.2 K.W.  
 Type and size Portable Plant with 42 H.P.  
 gasoline engine & 16.5 K.W.  
 100 V, 162 A, D.C. Generator.  
 Shelter  
 Materials of Construction Conc. floor & timber framing  
 Interior dimensions 14' x 14'-6"

**CONTROLLER:**

Location In existing B<sub>2</sub>S<sub>2</sub><sup>5</sup>, approx. 210'  
 S. of S. L. Shelter  
 Type Tripod  
 Form Binocular mount  
 Serial No. Not known  
 How protected or con- Inside semi-splinter proof <sup>B<sub>2</sub>S<sub>2</sub><sup>5</sup></sup> / 7  
 cealed

**\*CABLES:**

Power Plant to Searchlight  
 Type 1 cond., # 0, L.C. rubber in-  
 sulated.  
 Length & Size 2 reels @ 200 ft. each  
 In conduit or in air In Air  
Controller to light  
 Type 15 cond., # 16, L.C. rubber in-  
 sulated  
 Length & Size 1 reel @ 300 or 500 ft.  
Auxiliary controller to light  
 None

**REMARKS:**

All Portable Searchlights are stored centrally in the different Forts of the Harbor Defenses of Puget Sound and are assigned to the locations as/& when required. This makes them interchangeable; henceforth, no attempt is being made to list the descriptions of the different Projectors, Mirrors, Power Plants, Controllers, etc.

\* Power and controller cables are integral parts of a portable S.L. unit and are installed or removed with the units.

Ind 11/30

SECRET

600.914 (Page 1)

120530

SECRET

SPEKM-1

REPORT OF COMPLETED WORKS - SEACOAST FORTIFICATIONS  
(Searchlights)

HARBOR DEFENSES OF PUGET SOUND  
FORT EBEBY, WASHINGTON  
SEARCHLIGHT NUMBER 5  
SIZE: 60" Portable

Part IV Corrected to 27 November 1944

INSTALLATION:

Location by coordinates (Operating position)	x 295,780 yds.) Fuca y 89,228 yds.) Grid
Location by site	N of Lake Pondilla on Fort Ebey Mil. Res.
General character	Fixed shelter for portable unit
Date transferred to troops	27 November 1944
Cost to that date	\$ 4,800
Shelter (S.L.)	
Materials of construction	Conc. floor & timber fram- ing
Interior dimensions	12' x 16'-9" (Front semi- octagonal)
Height & Type of tower	No tower
Means by which Projector is placed in operating position	Projector is stationary, sliding doors front & sides
Reference axis of Projector in operating position	67 ft. M.S.L.
Kind of protection in operating position	6" x 2'-0" high conc. wall at base, timber frame roof overhead
Concealment of day shelter from approach channel	Shelter is under and among trees
Dates & Cost of extensive remodeling or reconstruction	None

POWER PLANT:

Location	Approx 210' S.E. of S.L. shelter
Maximum demand	16.2 K.W.
Type and size	Portable plant with 42 H.P. gasoline engine & 16.5 K.W., 100 V., 162 A., D.C. generator
Shelter	Conc. floor & timber framing
Materials of construction	14' x 14'-6"
Interior dimensions	

CONTROLLER:

Location	In existing B <sub>2</sub> S <sub>2</sub> <sup>33</sup> , approx. 175' S. of S.L. shelter
Type	Tripod
Form	Binocular mount
Serial No.	Not known
How protected or con- cealed	Inside semi-splinter proof B <sub>2</sub> S <sub>2</sub>

\*CABLES:

<u>Power Plant to Searchlight</u>	
Type	1 Cond. #0, L.C. rubber insulated
Length & Size	2 reels @ 200 ft. each
In conduit or in air	In Air
<u>Controller to light</u>	
Type	15 cond. #16, L.C. rubber insulated
Length & Size	1 reel @ 300 or 500 ft.
<u>Auxiliary controller to light</u>	
None	

REMARKS:

All portable searchlights are stored centrally in the different Forts of the Harbor Defences of Puget Sound and are assigned to the locations as/when required. This makes them interchangeable. Henceforth, no attempt is being made to list the descriptions of the different Projectors, Mirrors, Power Plants, Controllers, etc.

\* Power and controller cables are integral parts of a portable S. L. unit and are installed or removed with the units.

SECRET



REPORT OF COMPLETED WORKS - SEACOAST FORTIFICATIONS  
(Searchlights)

HARBOR DEFENSES OF PUGET SOUND  
FORT EBEBY (Swantown), WASHINGTON  
SEARCHLIGHT NUMBER 4  
SIZE: 60" Portable

Part IV Corrected to 27 November 1944

**INSTALLATION:**

Location by coordinates (Operating position) x 299,093 yds.) Fuca y 96,901 yds.) Grid

Location by site w. side of Whidbey Is. on Swantown Mil. Res.

General character Fixed shelter for portable unit.

Date transferred to troops 27 November 1944

Cost to that date \$ 4,800

Shelter (S.L.)

Materials of Construction Conc. floor & timber framing.

Interior dimensions 12' x 16'-9" (Front semi-octagonal).

Height & Type of tower No tower.

Means by which projector is placed in operating position. Projector is stationary, sliding doors on front and sides.

Reference axis of projector in operating position. 209 ft. M.S.L.

Kind of protection in operating position. 6" x 2'-0" high conc. wall at base, timber frame roof overhead.

Concealment of day shelter from approach channel. Shelter is under and among trees.

Dates and cost of extensive remodeling or reconstruction. None

**POWER PLANT:**

Location Approx. 250' S. of S.L. shelter

Maximum demand 16.2 K.W.

Type and size Portable Plant with 42 H.P. gasoline engine & 16.5 K.W. 100 V, 162 A, D.C. Generator.

Shelter

Materials of Construction Conc. floor & timber framing

Interior dimensions 14' x 14'-6"

**CONTROLLER:**

Location In existing B<sup>5</sup>S<sup>5</sup>, approx. 210' S. of S. L. Shelter

Type Tripod

Form Binocular mount

Serial No. Not known

How protected or concealed Inside semi-splinter proof <sup>B<sup>5</sup> S<sup>5</sup></sup> 7

**\*CABLES:**

Power Plant to Searchlight

Type 1 cond., # 0, L.C. rubber insulated.

Length & Size 2 reels @ 200 ft. each

In conduit or in air In Air

Controller to light

Type 15 cond., # 16, L.C. rubber insulated

Length & Size 1 reel @ 300 or 500 ft.

Auxiliary controller to light None

**REMARKS:**

All Portable Searchlights are stored centrally in the different Forts of the Harbor Defenses of Puget Sound and are assigned to the locations as/when required. This makes them interchangeable; henceforth, no attempt is being made to list the descriptions of the different Projectors, Mirrors, Power Plants, Controllers, etc.

\* Power and controller cables are integral parts of a portable S.L. unit and are installed or removed with the units.

Just 7 m

REPORT OF COMPLETED WORKS - SEACOAST FORTIFICATIONS  
(Searchlights)

HARBOR DEFENSES OF PUGET SOUND  
FORT EBEEY, WASHINGTON  
SEARCHLIGHT NUMBER 5  
SIZE: 60" Portable

Part IV Corrected to 27 November 1944

INSTALLATION:

Location by coordinates (Operating position)	x 295,780 yds.) Fuca y 89,228 yds.) Grid
Location by site	N of Lake Pondilla on Fort Ebeey Mil. Res.
General character	Fixed shelter for portable unit
Date transferred to troops	27 November 1944
Cost to that date	\$ 4,800
Shelter (S.L.)	
Materials of construction	Conc. floor & timber fram- ing
Interior dimensions	12' x 16'-9" (Front semi- octagonal)
Height & Type of tower	No tower
Means by which Projector is placed in operating position	Projector is stationary, sliding doors front & sides
Reference axis of Projector in operating position	67 ft. M.S.L.
Kind of protection in operating position	6" x 2'-0" high conc. wall at base, timber frame roof overhead
Concealment of day shelter from approach channel	Shelter is under and among trees
Dates & Cost of extensive remodeling or reconstruction	None

POWER PLANT:

Location	Approx 210' S.E. of S.L. shelter
Maximum demand	16.2 K.W.
Type and size	Portable plant with 42 H.P. gasoline engine & 16.5 K.W., 100 V. 162 A. D.C. generator
Shelter	
Materials of construction	Conc. floor & timber framing
Interior dimensions	14' x 14'-6"

CONTROLLER:

Location	In existing E <sub>2</sub> S <sub>2</sub> <sup>3 3</sup> , approx. 175' S. of S.L. shelter
Type	Tripod
Form	Binocular mount
Serial No.	Not known
How protected or con- cealed	Inside semi-splinter proof E <sub>2</sub> S <sub>2</sub> <sup>3 3</sup>

\*CABLES:

<u>Power Plant to Searchlight</u>	
Type	1 Cond. #0, L.C. rubber insulated
Length & Size	2 reels @ 200 ft. each
In conduit or in air	In Air
<u>Controller to light</u>	
Type	15 cond. #16, L.C. rubber insulated
Length & Size	1 reel @ 300 or 500 ft.
<u>Auxiliary controller to light</u>	
	None

REMARKS:

All portable searchlights are stored centrally in the different Forts of the Harbor Defences of Puget Sound and are assigned to the locations as/when required. This makes them interchangeable. Henceforth, no attempt is being made to list the descriptions of the different Projectors, Mirrors, Power Plants, Controllers, etc.

\* Power and controller cables are integral parts of a portable S. L. unit and are installed or removed with the units.

600.914 (29-1d)

120530

SECRET

SPEKM-1

REPORT OF COMPLETED WORKS - SEACOAST FORTIFICATIONS  
(Searchlights)HARBOR DEFENSES OF PUGET SOUND  
FORT EBEBY, WASHINGTON  
SEARCHLIGHT NUMBER 6  
SIZE: 60" Portable

Part IV Corrected to 27 November 1944

INSTALLATION:

Location by coordinates	x 295,716 yds.) Fuca
(Operating position)	y 88,597 yds.) Grid
Location by site	S. of Pondilla Lake on Ft. Ebey Mil. Res.
General character	Fixed shelter for portable unit
Date transferred to troops	27 November 1944
Cost to that date	\$ 4,450
Shelter (S.L.)	
Materials of construction	Conc. floor & timber framing
Interior dimensions	12'x16'-9" (Front semi-oct.)
Height & Type of tower	No tower
Means by which projector is placed in operating position	Projector is stationary, sliding doors - front & sides
Reference axis of projector in operating position	79 ft. M.S.L.
Kind of protection in operating position	6"x2'-0" high conc. wall at base, timber frame roof overhead
Concealment of day shelter from approach channel	Set partly in hill side with trees as background
Date & Cost of extensive remodeling or reconstruction	None

POWER PLANT:

Location	Approx. 170' E. of S.L. shelter
Maximum demand	16.2 K.W.
Type & Size	Portable plant with 42H.P. gasoline engine, 16.5 K.W., 100 V., 162A. D. C. Generator
Shelter	
Materials of construction	Conc. floor & timber framing
Interior dimensions	14' x 14'-6"

CONTROLLER:

Location	In existing B <sub>6</sub> S <sub>6</sub> <sup>33</sup> approx. 235' S. E. of S. L. shelter
Type	Tripod
Form	Binocular mount
Serial No.	Not known
How protected or concealed	Inside semi-splinterproof B <sub>6</sub> S <sub>6</sub> <sup>33</sup>

\*CABLES:

<u>Power Plant to searchlight</u>	
Type	1 cond., #0, L. C. Rubber insulated
Length & Size	2 reels @ 200 ft. each
In conduit or in air	In Air
<u>Controller to light</u>	
Type	15 cond., #16, L. C. rubber insulated
Height & Size	1 reel @ 300 or 500 ft.
<u>Auxiliary Controller to light</u>	
	None

REMARKS:

All portable searchlights are stored centrally in the different Forts of the Harbor Defenses of Puget Sound and are assigned to the locations as & when required. This makes them interchangeable. Henceforth no attempt is being made to list the descriptions of the different projectors, mirrors, power plants, controllers, etc.

\* Power & controller cables are integral parts of a portable S.L. unit and are installed or removed with the units.

SECRET

60.914 (Reg. Ed.)

SECRET

SPEKM-1

REPORT OF COMPLETED WORKS - SEACOAST FORTIFICATIONS  
(Searchlights)HARBOR DEFENSES OF PUGET SOUND  
FORT EBEEY, WASHINGTON  
SEARCHLIGHT NUMBER 6  
SIZE: 60" Portable

Part IV Corrected to 27 November 1944

INSTALLATION:

Location by coordinates	x 295,716 yds.) Fuca
(Operating position)	y 88,597 yds.) Grid
Location by site	S. of Pondilla Lake on Ft. Ebey Mil. Res.
General character	Fixed shelter for portable unit
Date transferred to troops	27 November 1944
Cost to that date	\$ 4,450
<u>Shelter (S.L.)</u>	
Materials of construction	Conc. floor & timber framing
Interior dimensions	12'x16'-9" (Front semi-oct.)
Height & Type of tower	No tower
Means by which projector is placed in operating position	Projector is stationary, sliding doors - front & sides
Reference axis of projector in operating position	79 ft. M.S.L.
Kind of protection in operating position	6"x2'-0" high conc. wall at base, timber frame roof overhead
Concealment of day shelter from approach channel	Set partly in hill side with trees as background
Date & Cost of extensive remodeling or reconstruction	None

POWER PLANT:

Location	Approx. 170' E. of S.L. shelter
Maximum demand	16.2 K.W.
Type & Size	Portable plant with 42 H.P. gasoline engine, 16.5 K.W., 100 V., 162A. D. C. Generator
<u>Shelter</u>	
Materials of construction	Conc. floor & timber framing
Interior dimensions	14' x 14'-6"

CONTROLLER:

Location	In existing <sup>33</sup> E.S. approx. 235' S. E. of S. L. shelter
Type	Tripod
Form	Binocular mount
Serial No.	Not known
How protected or concealed	Inside semi-splinterproof <sup>33</sup> E.S.

\*CABLES:

<u>Power Plant to searchlight</u>	
Type	1 cond., #0, L. C. Rubber insulated
Length & Size	2 reels @ 200 ft. each
In conduit or in air	In Air
<u>Controller to light</u>	
Type	15 cond., #16, L. C. rubber insulated
Height & Size	1 reel @ 300 or 500 ft.
Auxiliary Controller to light	None

REMARKS:

All portable searchlights are stored centrally in the different Ports of the Harbor Defenses of Puget Sound and are assigned to the locations as & when required. This makes them interchangeable. Henceforth no attempt is being made to list the descriptions of the different projectors, mirrors, power plants, controllers, etc.

\* Power & controller cables are integral parts of a portable S.L. unit and are installed or removed with the units.

SECRET

94554

600,914 (Prog Ed) 94554

SPEKM-1

REPORT OF COMPLETED WORKS - SEACOAST FORTIFICATIONS  
(Fire Control or Torpedo Structures)

HARBOR DEFENSES OF PUGET SOUND  
FORT EBEBY, WASHINGTON  
STRUCTURE: DATUM LIBBY

Form 2.

Corrected to 22 March 1944

STRUCTURE:	:	:	Forts from which visible:	:	Ebey (Swantown F.C.)
Location:	:	: Approx. 200 ft. offshore	:	:	:
	:	: and W. of Whidbey Island,	:	:	:
	:	: approx. halfway between	:	:	:
	:	: Fort Ebey and Swantown.	:	:	:
Fuca Grid Coord.	:	: x 296,966.0 yds.	:	:	:
	:	: y 93,215.5 yds.	:	:	:
Date of transfer	:	: 28 January 1944	:	:	:
Cost to that date	:	: \$800	:	:	:
Type of construction	:	: 3-pile dolphin with	:	:	:
	:	: 2 - 2" x 12" vertical, white	:	:	:
	:	: datum marker boards	:	:	:
	:	:	:	:	:
	:	:	:	:	:

NO PLAN

FS-1288

Prog Card 127

Incl #4

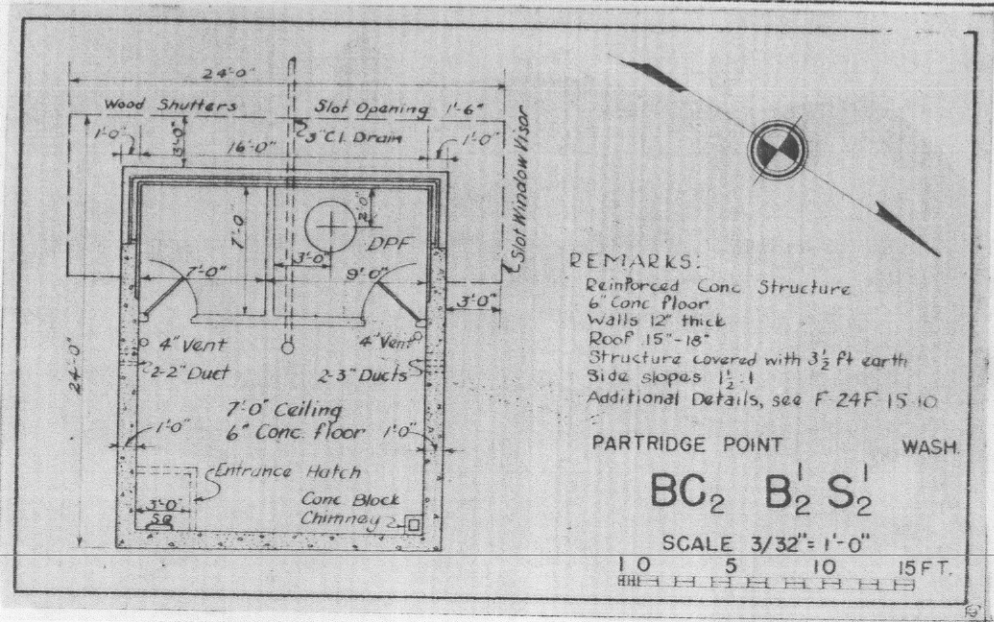
600.914 (Puget Sound) CH 64027  
 REPORT OF COMPLETED WORKS - SEACOAST FORTIFICATIONS  
 (Fire Control or Torpedo Structures)

HARBOR DEFENSES OF PUGET SOUND  
 FORT EBEL, WASHINGTON  
 STRUCTURE BC<sub>2</sub> BL/2 SL/2 4248  
 64027

Form 2. Corrected to July 16, 1943

SECRET

<b>STRUCTURE:</b>	:	<b>INSTRUMENTS AND EQUIPMENT:</b>	:
Location	:	Type of observing inst.	:
Fuca Grid Coord. (BL/2)	:	Type of plotting board	:
	:		:
	:	<b>DATA TRANSMISSION:</b>	:
Date of transfer	:	Type of	:
Cost to that date	:		:
Type of construction	:	Date of transfer	:
(a) Roof	:	Cost of data transmission equip.	:
(b) Remainder of bldg.	:		:
How concealed	:		:
How protected	:		:
Height above concealment	:		:
Height above protection	:		:
Conspicuous at . . . .	:		:
<b>ELECTRIC CURRENT:</b>	:		:
Source of	:		:
Kilowatts required	:		:
Type of lighting fixtures	:		:
<b>HEAT:</b>	:		:
How heated	:		:
<b>WATER &amp; SEWER:</b>	:		:
Connected to water mains	:		:
Connected to sewer	:		:
Type of latrine	:		:
Permanent or temporary inst'n	:		:
Present condition	:		:
<b>REFERENCE:</b>	:		:
Reference of site	:		:
Reference of instrument axis	:		:



REMARKS:  
 Reinforced Conc Structure  
 6" Conc Floor  
 Walls 12" thick  
 Roof 15"-18"  
 Structure covered with 3 1/2 ft earth  
 Side slopes 1 1/2:1  
 Additional Details, see F 24F 15 10

PARTRIDGE POINT WASH.  
 BC<sub>2</sub> B<sub>2</sub><sup>1</sup> S<sub>2</sub><sup>1</sup>  
 SCALE 3/32" = 1'-0"  
 10 5 10 15 FT.

371  
 FS-714 Proj Card 55

SECRET

9455

600.914 (Pay Sl) 94554

SPEKM-1

REPORT OF COMPLETED WORKS - SEACOAST FORTIFICATIONS  
(Fire Control or Torpedo Structures)

HARBOR DEFENSES OF PUGET SOUND  
FORT EBEEY, WASHINGTON  
STRUCTURE: DATUM SMITH

Form 2.

Corrected to 22 March 1944

STRUCTURE:	:	:	:
Location:	:	: Approx. 1000 ft. S.E. of	: Forts from which visible: : Ebey and Worden
	:	: Smith Island	: :
Tuca Grid Coord.	:	: x 289,851.0 yds.	: :
	:	: y 99,440.0 yds.	: :
Date of transfer	:	: 28 January 1944	: :
Cost to that date	:	: \$800	: :
Type of construction	:	: 3-pile dolphin with	: :
	:	: 2 - 2" x 12" vertical, white	: :
	:	: datum marker boards.	: :
	:	:	: :
	:	:	: :
	:	:	: :
	:	:	: :
	:	:	: :

NO PLAN

FS-1288

Proj Card 127

Incl # 3

9455  
600.914 (Plan 10) 94554

SPEKM-1

REPORT OF COMPLETED WORKS - SEACOAST FORTIFICATIONS  
(Fire Control or Torpedo Structures)

HARBOR DEFENSES OF PUGET SOUND  
FORT EBAY, WASHINGTON  
STRUCTURE: DATUM SMITH

Form 2.

Corrected to 22 March 1944

STRUCTURE:	:	:	Forts from which visible:	:	Ebay and Worden
Location:	:	Approx. 1000 ft. S.E. of	:	:	
	:	Smith Island	:	:	
Fuca Grid Coord.	:	x 289,851.0 yds.	:	:	
	:	y 99,440.0 yds.	:	:	
Date of transfer	:	28 January 1944	:	:	
Cost to that date	:	\$800	:	:	
Type of construction	:	3-pile dolphin with	:	:	
	:	2 - 2" x 12" vertical, white	:	:	
	:	datum marker boards.	:	:	
	:		:	:	
	:		:	:	
	:		:	:	
	:		:	:	

NO PLAN

FS-1288 Proj Card 127

Incl # 3



94554

600.914 (Proj Id) 94554

SPEKM-1

REPORT OF COMPLETED WORKS - SEACOAST FORTIFICATIONS  
(Fire Control or Torpedo Structures)

HARBOR DEFENSES OF PUGET SOUND  
FORT EBEBY, WASHINGTON  
STRUCTURE: DATUM PROTECTION

Form 2.

Corrected to 22 March 1944

STRUCTURE:	:	:	Forts from which visible:	:	Ebey, Casey and Worden
Location:	:	Approx. 4000 ft NW of	:	:	:
	:	Protection Island	:	:	:
Auca Grid Coord.	:	x 281,541.7 yds.	:	:	:
	:	y 77,880.9 yds.	:	:	:
Date of transfer	:	28 January 1944	:	:	:
Cost to that date	:	\$850	:	:	:
Type of construction	:	3-pile dolphin with	:	:	:
	:	2 - 2" x 12" vertical, white	:	:	:
	:	datum marker boards.	:	:	:
	:	:	:	:	:
	:	:	:	:	:
	:	:	:	:	:
	:	:	:	:	:

NO PLAN

ES-1288

Proj Card 127

Pub # 5

94554

600.914 (Prog Ed) 94554

SPEKM-1

REPORT OF COMPLETED WORKS - SEACOAST FORTIFICATIONS  
(Fire Control or Torpedo Structures)

HARBOR DEFENSES OF PUGET SOUND  
FORT EBEEY, WASHINGTON  
STRUCTURE: DATUM PROTECTION

Form 2.

Corrected to 22 March 1944

STRUCTURE:	:	:	:
Location:	:	: Approx. 4000 ft NW of	: Forts from which visible: : Ebey, Casey and Worden
	:	: Protection Island	:
Luca Grid Coord.	:	: x 281,541.7 yds.	:
	:	: y 77,880.9 yds.	:
Date of transfer	:	: 28 January 1944	:
Cost to that date	:	: \$850	:
Type of construction	:	: 3-pile dolphin with	:
	:	: 2 - 2" x 12" vertical, white	:
	:	: datum marker boards.	:
	:	:	:
	:	:	:
	:	:	:
	:	:	:

NO PLAN

15-1288

Prog Card 127

Incl # 5

94554

600.914 (Page 16) 94554

SPEKM-1

REPORT OF COMPLETED WORKS - SEACOAST FORTIFICATIONS  
(Fire Control or Torpedo Structures)

HARBOR DEFENSES OF PUGET SOUND  
FORT EBEBY, WASHINGTON  
STRUCTURE: DATUM LIBBY

Form 2.

Corrected to 22 March 1944

STRUCTURE:	:	:	Forts from which visible:	:	Ebey (Swantown F.C.)
Location:	:	: Approx. 200 ft. offshore	:	:	:
	:	: and W. of Whidbey Island,	:	:	:
	:	: approx. halfway between	:	:	:
	:	: Fort Ebey and Swantown.	:	:	:
Fuca Grid Coord.	:	: x 296,966.0 yds.	:	:	:
	:	: y 93,215.5 yds.	:	:	:
Date of transfer	:	: 28 January 1944	:	:	:
Cost to that date	:	: \$800	:	:	:
Type of construction	:	: 3-pile dolphin with	:	:	:
	:	: 2 - 2" x 12" vertical, white	:	:	:
	:	: datum marker boards	:	:	:
	:	:	:	:	:
	:	:	:	:	:

NO PLAN

FS-1288  
Prog Card 127

Incl #4