

NORTH CAPE
 Refer to Plot Plan File # F 59-157
 Base End Station (N 125 S) V 8
 Technical Searchlight Station (2)
 Distal Electric Control (1)

TEBER POINT
 Refer to Plot Plan File # F 59-188
 155 MM Gun Emplacement Battery #14
 Battery Command Station BC-6
 Base End Station 8151 - Tower
 Command Station 1 SCR 507 - Tower
 Base and Reserve Magazine
 Automatic Magazine (2)
 War Reserve Magazine (2)
 Hoisting Mast Trolley #14
 H.L. Magazine (1)

BALD HILL
 Refer to Plot Plan File # F 59-151
 Technical Searchlight Station
 Distal Electric Control

SPRUCE CAPE
 Refer to Plot Plan File # F 59-152
 1-90 MM Gun Mount (2.2 Milsite)
 Base End Station 8134 - Tower
 2 Technical Searchlight Stations
 Distal Electric Control
 Searchlight Storage & Maintenance
 Base Magazine (2)
 Battle Allowance Magazine

CASTLE BLUFF
 Refer to Plot Plan File # F 59-185
 6" Battery #1 200
 Battery Command Station BC5
 Operator Building (2)
 Radar Tower SCR 295
 Automatic Magazine Magazine (2)
 War Reserve Magazine
 Radar Building

ST PETERS HEAD
 Refer to Plot Plan File # F 59-151
 6" Battery #1 403
 Battery Command Station BC1
 Searchlight and Hoisting Mast
 War Reserve Magazine
 Automatic Magazine Magazine (2)

PEDMONT POINT
 Refer to Plot Plan File # F 59-152
 Sea-level Control Station SCR 296
 Technical Searchlight Station
 Distal Electric Control
 Operator Building (2)
 Radar Building

BURT POINT
 Refer to Plot Plan File # F 59-185
 Base End Station 8151 - F53 (Radar)
 Technical Searchlight Station (2)
 Distal Electric Control (2)

CHINIAK POINT
 Refer to Plot Plan File # F 59-151
 155 MM Gun Emplacement Battery #15
 Battery Command Station BC2
 Base End Station 8153
 Radar Tower Battery #12
 Automatic Magazine Magazine (2)
 War Reserve Magazine (2)
 Battle Allowance Magazine (2)

POINT HEAD
 Refer to Plot Plan File # F 59-183
 Base End Station 8154 V3 #
 Technical Searchlight Station
 Distal Electric Control

GIBSON COVE
 Refer to Plot Plan File # F 59-183
 Base End Station 8153
 Searchlight Station (2)
 Searchlight Storage & Maintenance
 Distal Electric Control (2)

MIDWAY POINT
 Refer to Plot Plan File # F 59-151
 Base End Station 8154
 Technical Searchlight Station (2)
 Distal Electric Control

EAST CAPE
 Refer to Plot Plan File # F 59-183
 Searchlight Storage & Maintenance
 Technical Searchlight Station (2)
 Distal Electric Control (2)

POINT CURTO
 Refer to Plot Plan File # F 59-150
 T-10 Station
 Searchlight Storage & Maintenance
 Meteorological Station

ARTILLERY HILL
 Refer to Plot Plan File # F 59-182
 Radar Station Command Post
 Radar Station C.O. Post

MT HERMAN
 Refer to Plot Plan File # F 59-183
 H.D. Observation Post #1

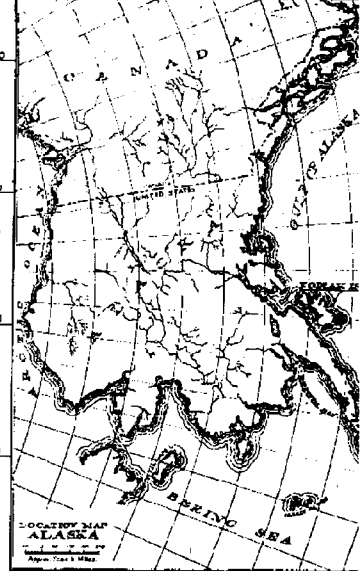
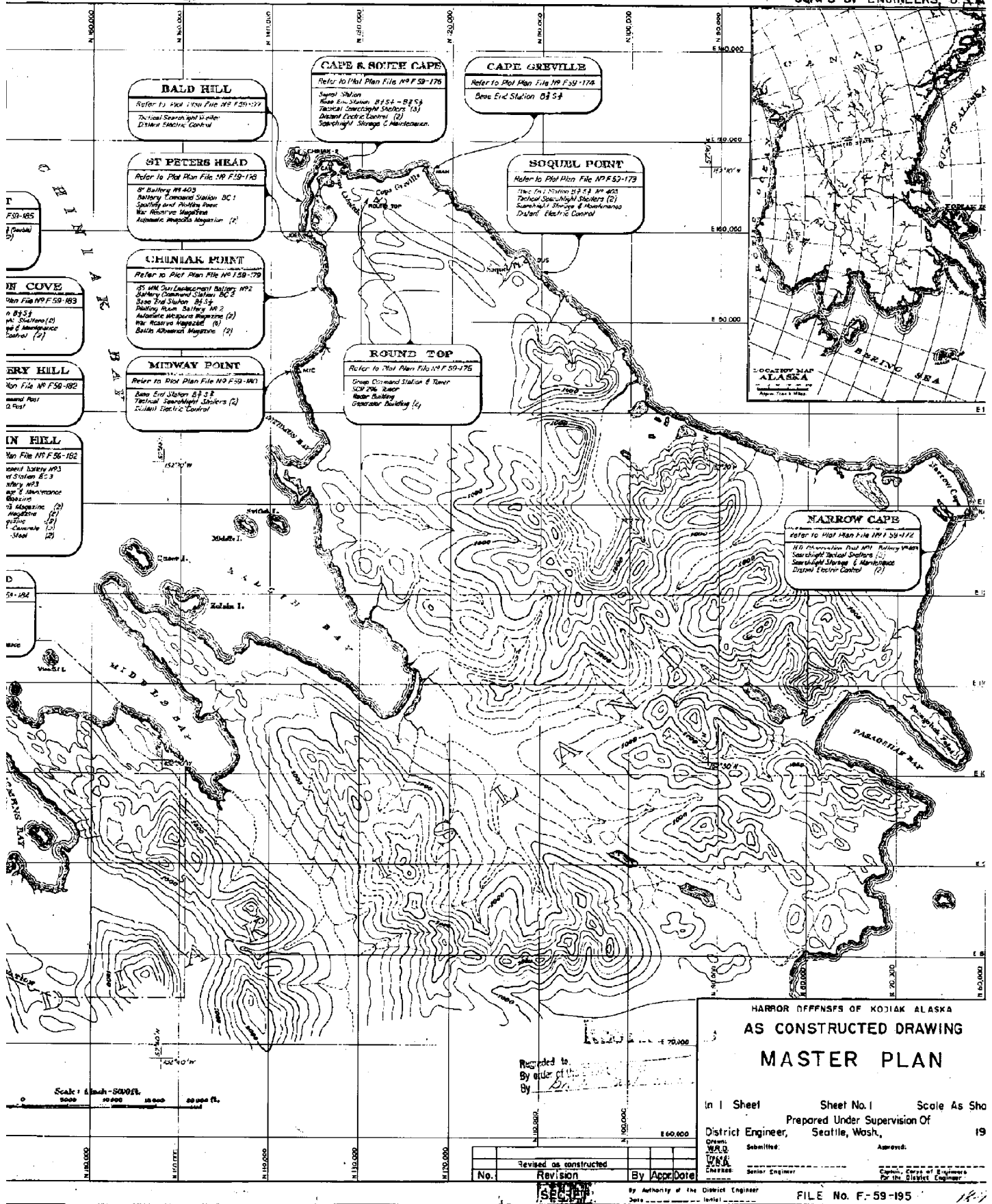
MILLER POINT
 Refer to Plot Plan File # F 59-182
 6" Battery #1 404
 Battery Command and Base End Sta 815205
 Radar and Hoisting Mast
 Searchlight Storage & Maintenance
 Automatic Magazine Magazine (2)
 War Reserve Magazine
 Technical Searchlight Station
 Distal Electric Control

BUSKIN HILL
 Refer to Plot Plan File # F 59-182
 155 MM Gun Emplacement Battery #13
 Battery Command Station BC3
 Hoisting Mast Battery #13
 Searchlight Storage & Maintenance
 Base & Reserve Magazine
 Automatic Magazine Magazine
 Battle Allowance Magazine
 War Reserve Magazine
 Group Magazine - Concrete
 Group Magazine - Steel

PUFFIN ISLAND
 Refer to Plot Plan File # F 59-184
 90 MM Gun Mount (2)
 Technical Searchlight Station
 Distal Electric Control
 Automatic Magazine Magazine
 Battle Allowance Magazine
 Searchlight Storage & Maintenance

MANSFIELD RIDGE
 Refer to Plot Plan File # F 59-181
 Base End Station 8155

KISHLAK POINT
 Refer to Plot Plan File # F 59-194
 H.D. Observation Post #1
 Searchlight Storage & Maintenance
 Technical Searchlight Station (2)
 Distal Electric Control



HARBOR DEFENSES OF KODIAK ALASKA
AS CONSTRUCTED DRAWING
MASTER PLAN

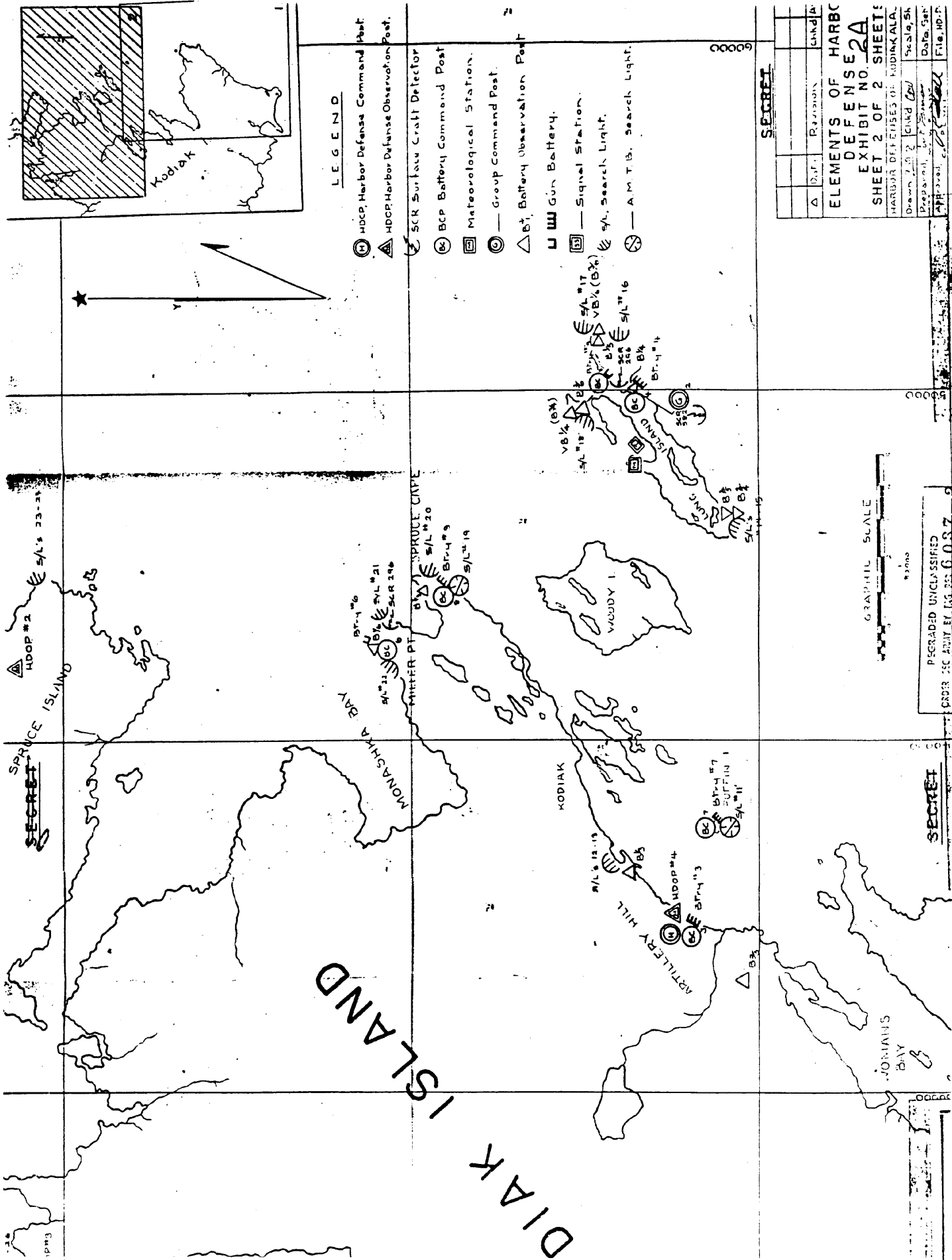
In 1 Sheet Sheet No. 1 Scale As Shown
 Prepared Under Supervision Of
 District Engineer, Seattle, Wash., 19

Submitted: Approved:
 W.R.A. Senior Engineer Captain, Corps of Engineers
 District Engineer For the District Engineer

Revised as constructed
 No. Revision By Appr. Date

By Authority of the District Engineer
 Date: 1954
 Initial: [Signature]

FILE No. F-59-195

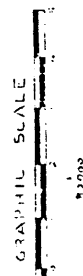


SECRET

DATE	REVISION	CHKD BY

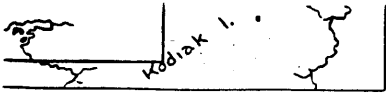
ELEMENTS OF HARBOR DEFENSE NO. 2A
EXHIBIT NO. 2A
SHEET 2 OF 2 SHEETS
 HARBOR DEFENSE OF KODIAK ALA.
 Drawn: J.M. [Signature]
 Prepared: [Signature]
 Checked: [Signature]

Scale: 5k
 Date: [Blank]
 File: HD- [Blank]



DECLASSIFIED
 ORDER 552 ARMY REG. 255.6.0.7

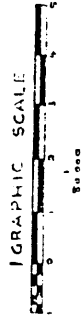
SECRET



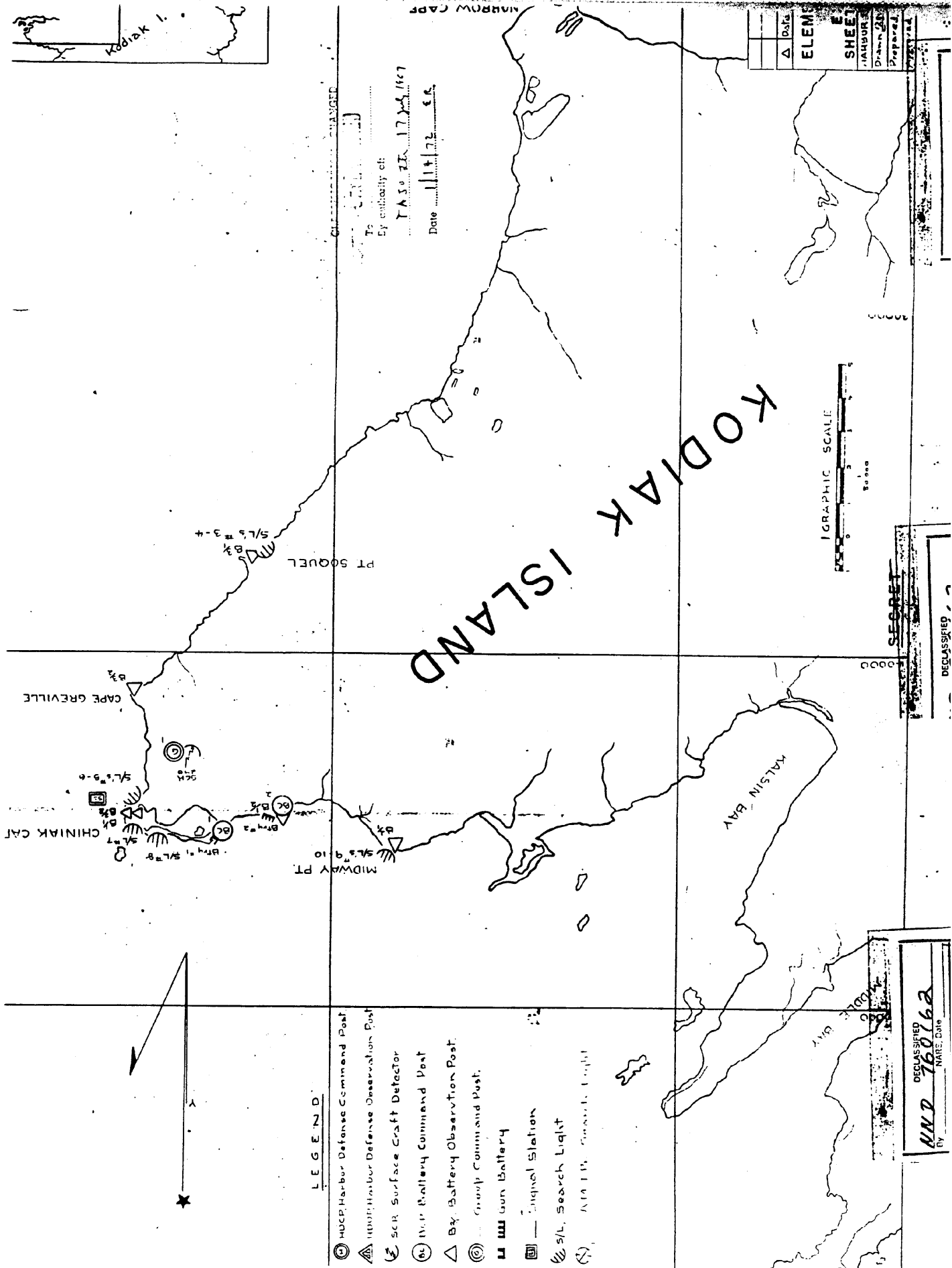
NARROW CAP

Δ	DATA
ELEM	
SHEET	
HARBOR	
DRAWN BY	
CHECKED BY	
DATE	

To
By authority of
TASO TR 1734/167
Date 11/14/72 S.S.



KODIAK ISLAND

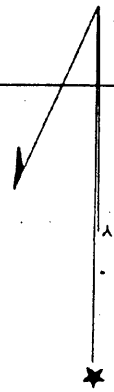


SECRET
DECLASSIFIED

DECLASSIFIED
By **NND 160962**
DATE

LEGEND

- ⊙ HUCP Harbor Defense Command Post
- ⊙ HUCP Harbor Defense Observation Post
- ⊙ SCR Surface Craft Detector
- ⊙ WLP Battery Command Post
- ⊙ Bx Battery Observation Post
- ⊙ Group Command Post
- ⊙ Gun Battery
- ⊙ Signal Station
- ⊙ S/L Search Light
- ⊙ ATAP Search Light



CAPE GREVILLE

S/L 5-6

CHINIAK CAP

S/L 7

S/L 8

MIDWAY PT

S/L 9-10

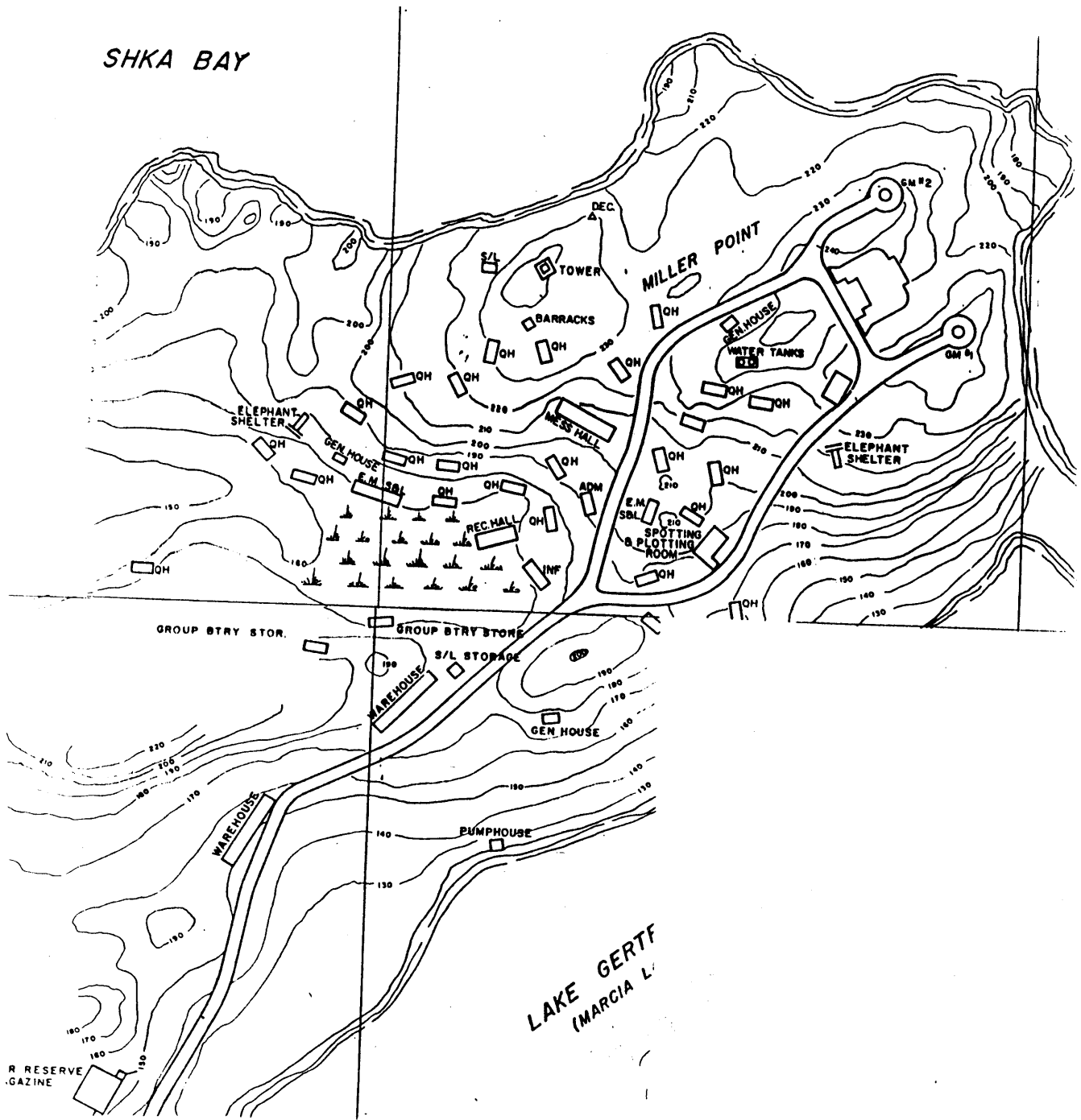
S/L 3-4

PT SOQUEL

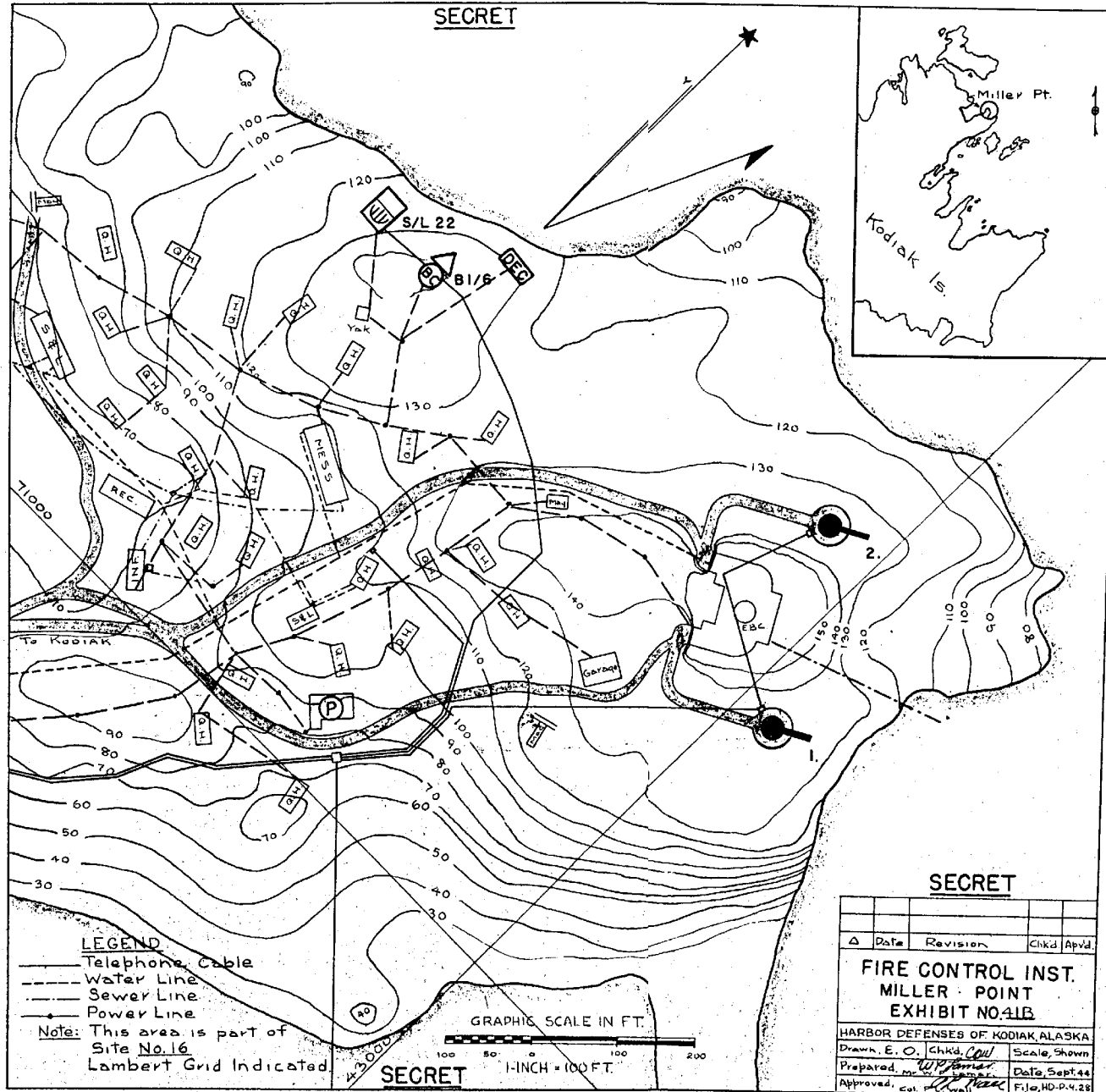
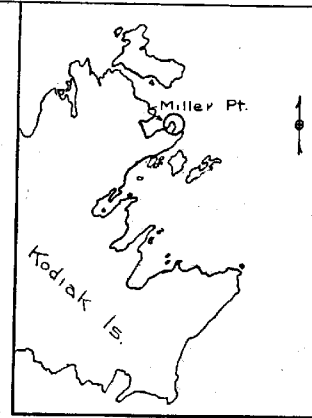
KALSIN BAY

ADLER BAY

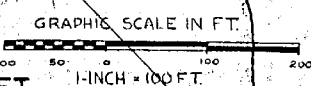
SHKA BAY



SECRET



LEGEND
 — Telephone Cable
 - - - Water Line
 - - - Sewer Line
 - - - Power Line
 Note: This area is part of Site No. 16
 Lambert Grid Indicated



SECRET

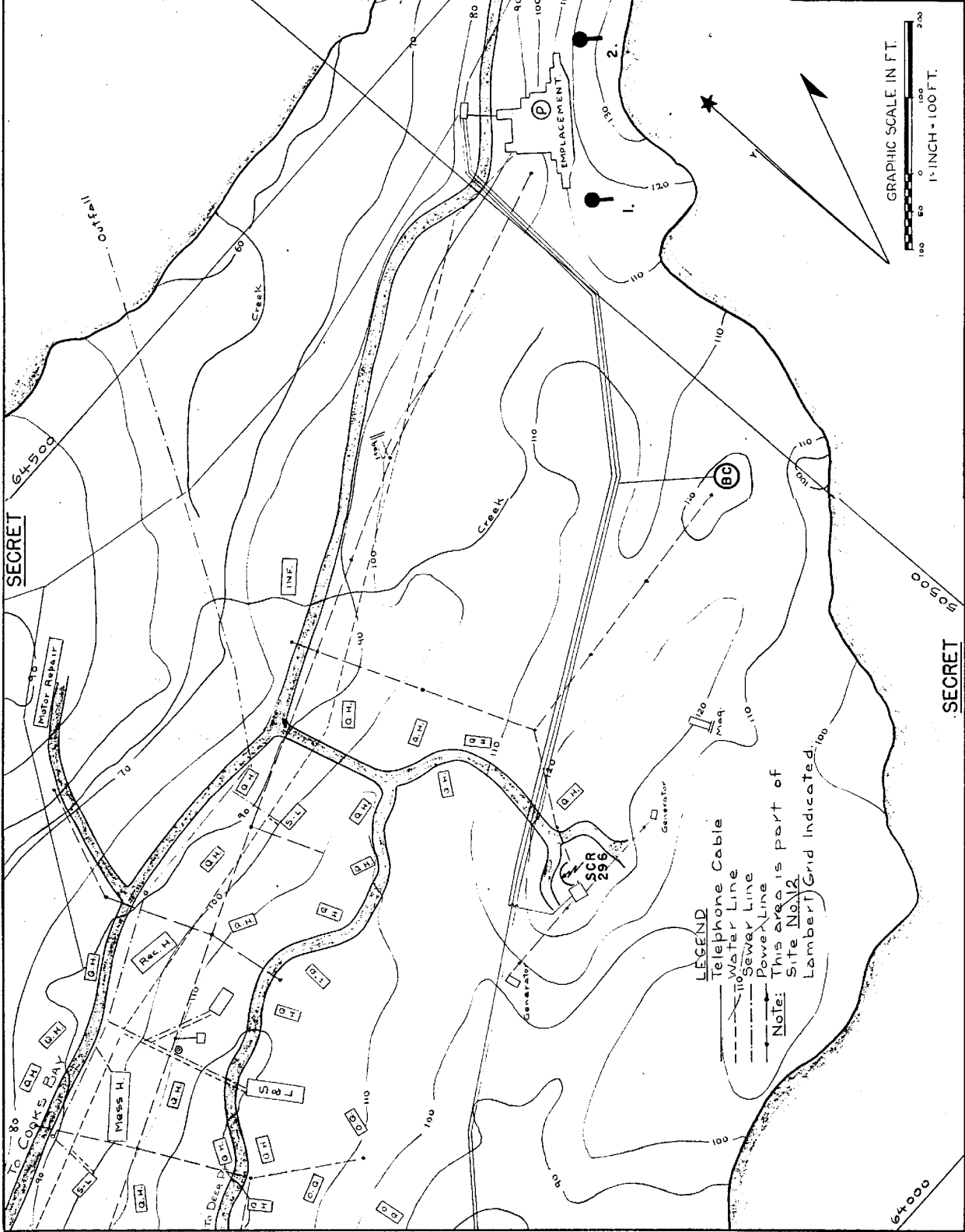
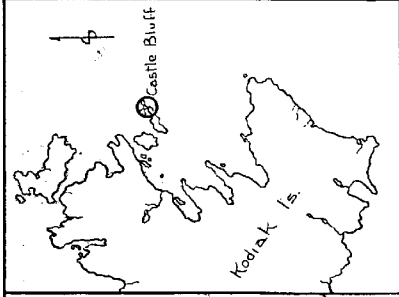
Δ	Date	Revision	Chkd	Apvd.

**FIRE CONTROL INST.
MILLER POINT
EXHIBIT NO. 41B**

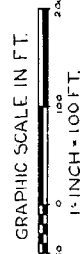
HARBOR DEFENSES OF KODIAK, ALASKA
 Drawn, E. O. Chkd, C. G. Scale, Shown
 Prepared, M. J. Date, Sept 44
 Approved, Col. F. L. H. D. 4. 23

SECRET

SECRET



LEGEND
 Telephone Cable
 Water Line
 Sewer Line
 Power Line
 Note: This area is part of Site No. 12
 Lamberth Grid Indicated.

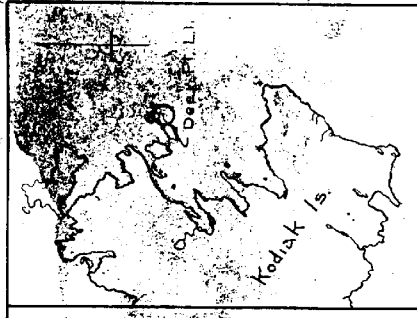


SECRET

Δ	Date	Revision	(M/K) (J) (A) (D)
FIRE CONTROL INST. CASTLE BLUFFS LI. EXHIBIT NO. 38B.			
HARBOR DEFENSES OF KODIAK, ALASKA DRAWN BY: G.M.W. (M/K) G.H.V. (J) (A) (D) Scale: SHOWN PREPARED BY: G.M.W. (M/K) G.H.V. (J) (A) (D) Date: 5/21/44 APPROVED BY: G.M.W. (M/K) G.H.V. (J) (A) (D) File: HDP 423			

SECRET

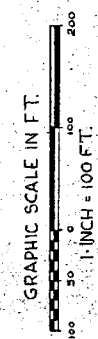
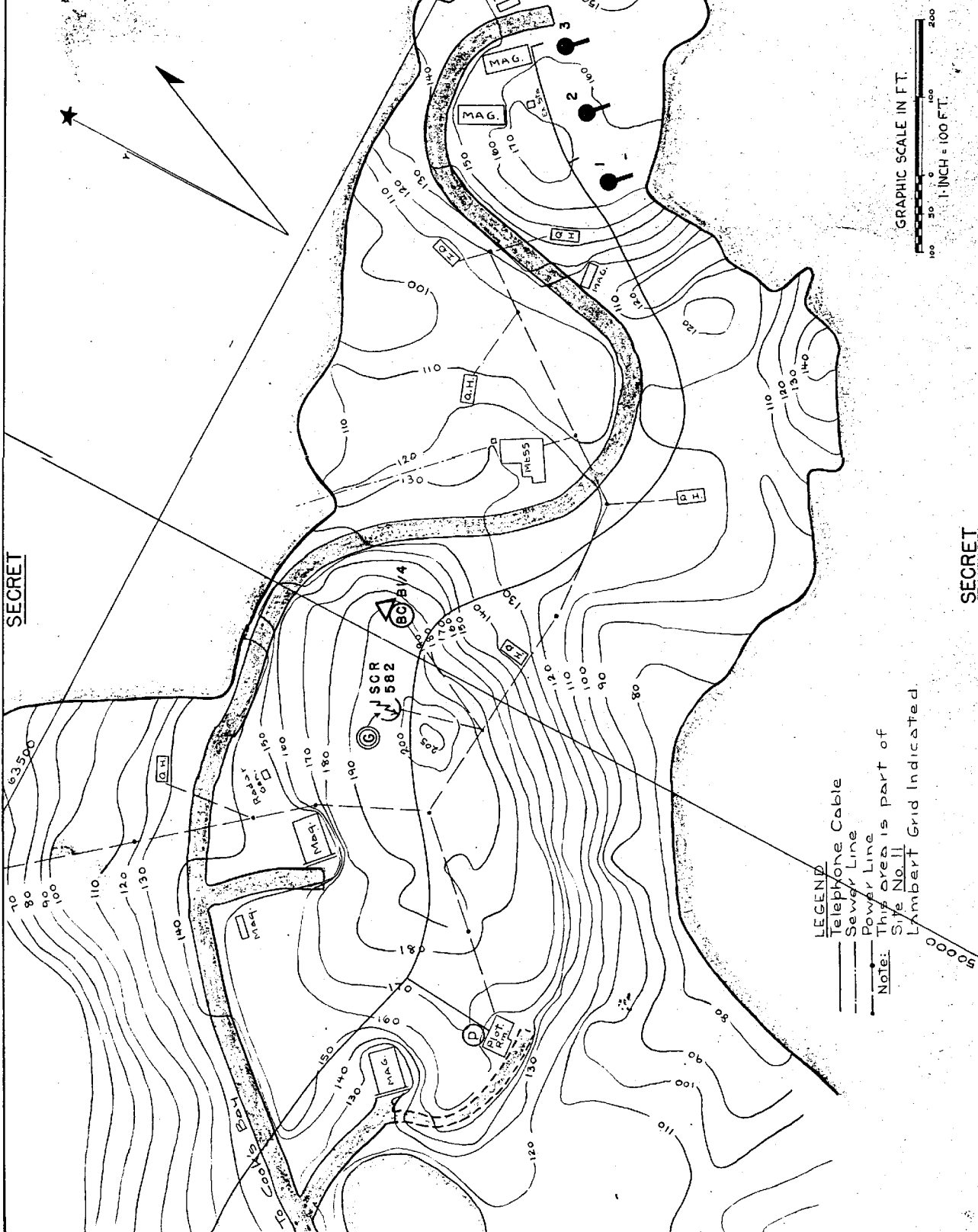
SECRET



SECRET

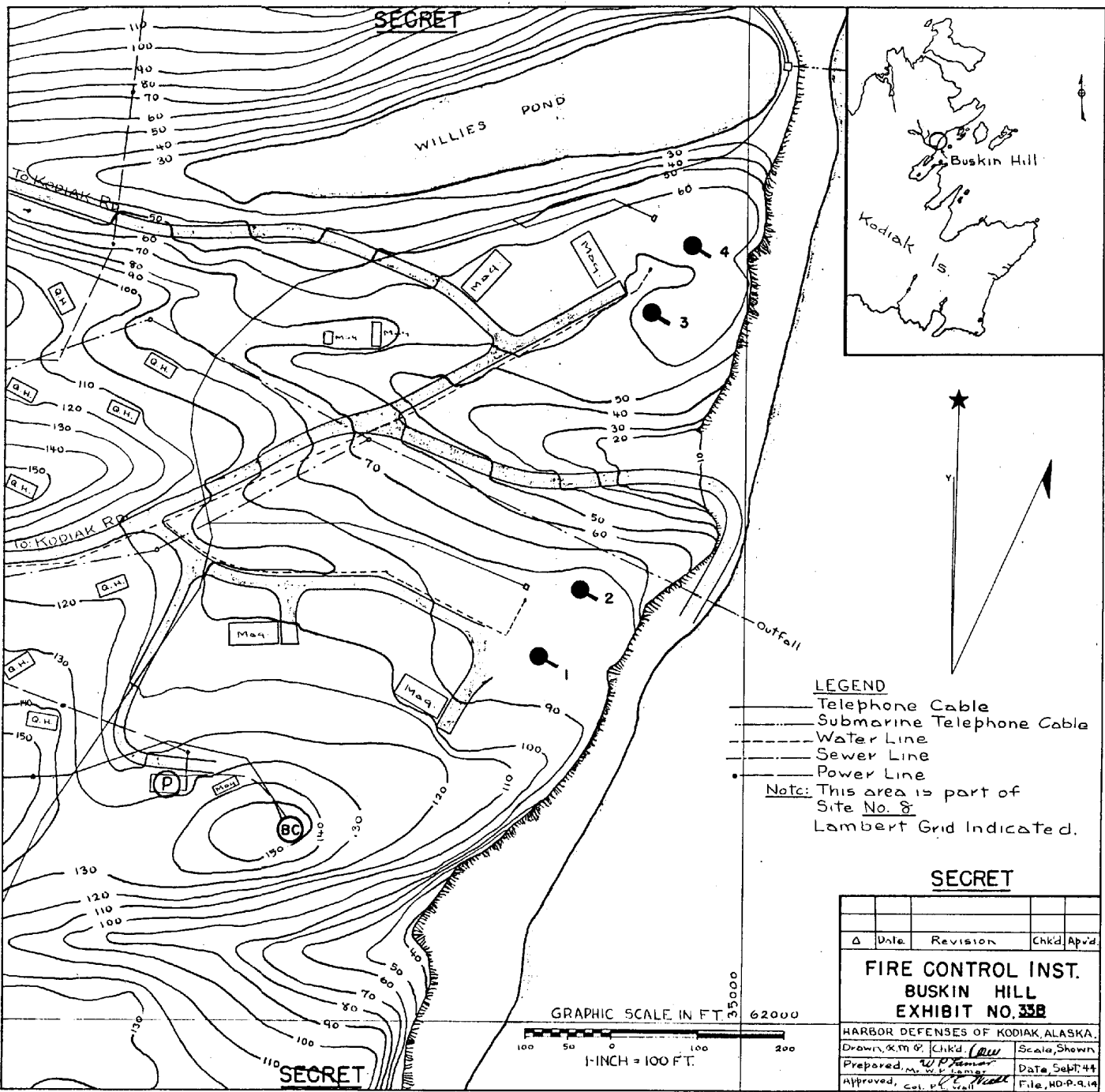
FIRE CONTROL INST.
DEER POINT L.I.
EXHIBIT NO. 23B

Δ	Date	Revision	Chkd/ Appd
HARBOR DEFENSES OF KODIAK, ALASKA			
Drawn by	Chkd/ Appd	Scale	Sheet
Prepared by	Date	Date	Suppl. 4
Approved, Col. P. J. [Signature]			File No. 9.2.2

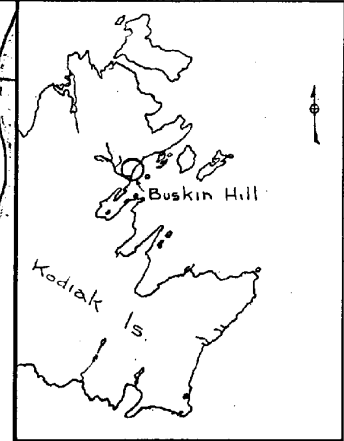


- LEGEND**
- Telephone Cable
 - Sewer Line
 - Power Line
- Note:** This area is part of Site No. II Lambert Grid Indicated.

SECRET



SECRET



LEGEND

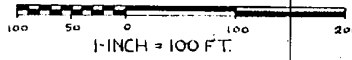
- Telephone Cable
- Submarine Telephone Cable
- Water Line
- Sewer Line
- Power Line

Note: This area is part of Site No. 8.
Lambert Grid Indicated.

SECRET

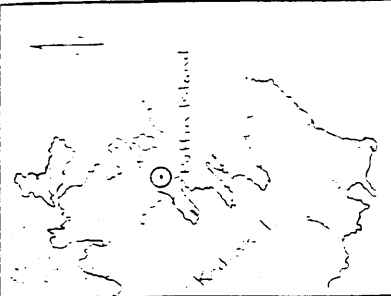
Δ	Date	Revision	Chkd	App'd
FIRE CONTROL INST. BUSKIN HILL EXHIBIT NO. 33B				
HARBOR DEFENSES OF KODIAK, ALASKA.				
Drawn	K.M.G.	Chkd	RLW	Scale, Shown
Prepared	W.P. Jensen			Date, Sept. 44
Approved	Col. P.L. Wall			File, HD-P-9.14

GRAPHIC SCALE IN FT. 35000 62000

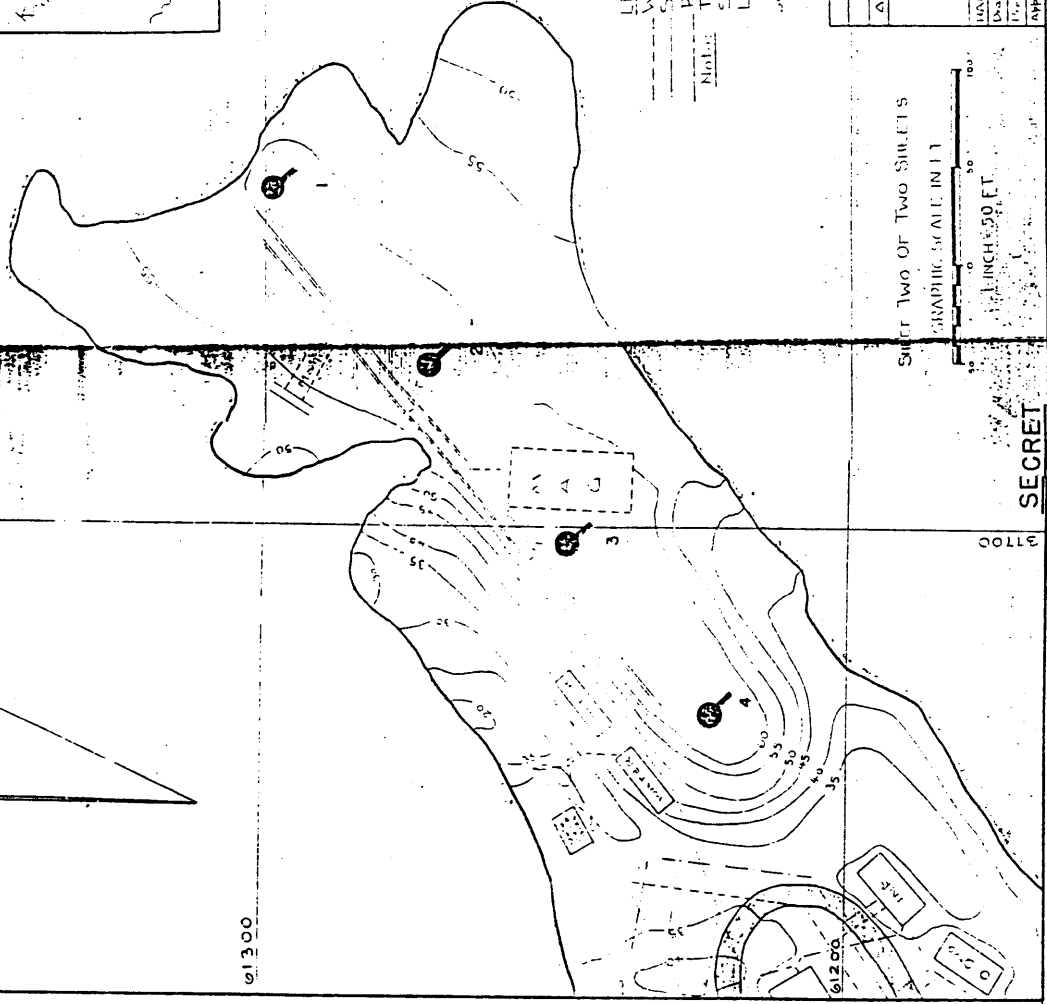


SECRET

SECRET



01300



LEGEND
 Water Line
 Sewer Line
 Power Cable
 Note: This area is part of
 Sale No. 57A
 Lambert Grid Reference

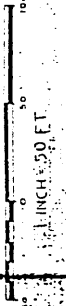
SECRET

Δ	Scale	1:50,000	Established
	Projection		
	Zone		

FIRE CONTROL INST.
PUFFIN ISLAND
EXHIBIT NO. 431L

MANUALLY CHECKED BY: [Signature]
 DRAWN BY: [Signature]
 APPROVED BY: [Signature]

SHEET TWO OF TWO SHEETS
 GRAPHIC SCALE IN FT.
 1 INCH = 50 FT.

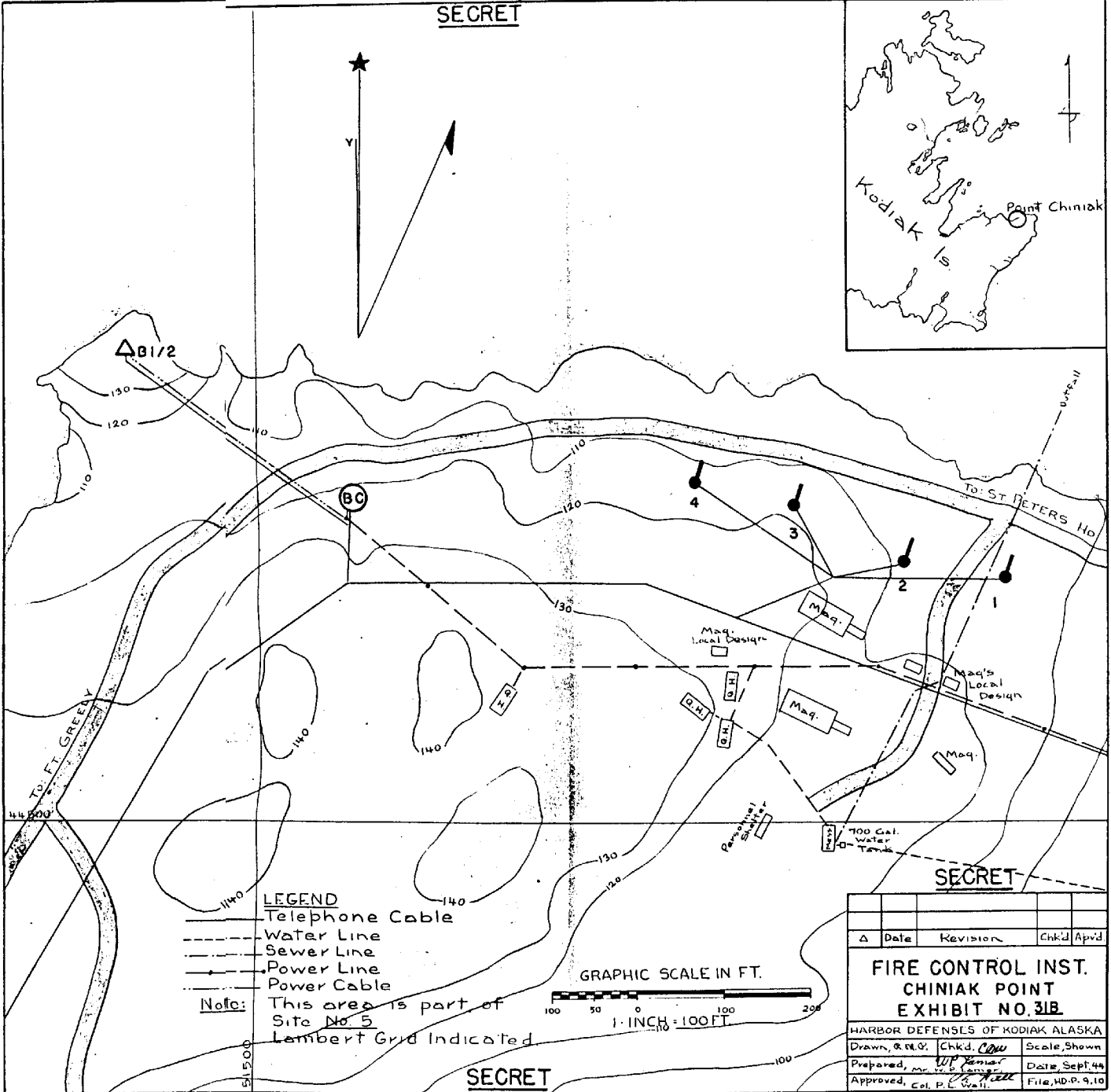
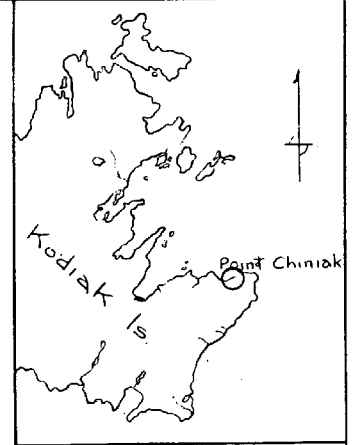


3700

SECRET

9.17
5

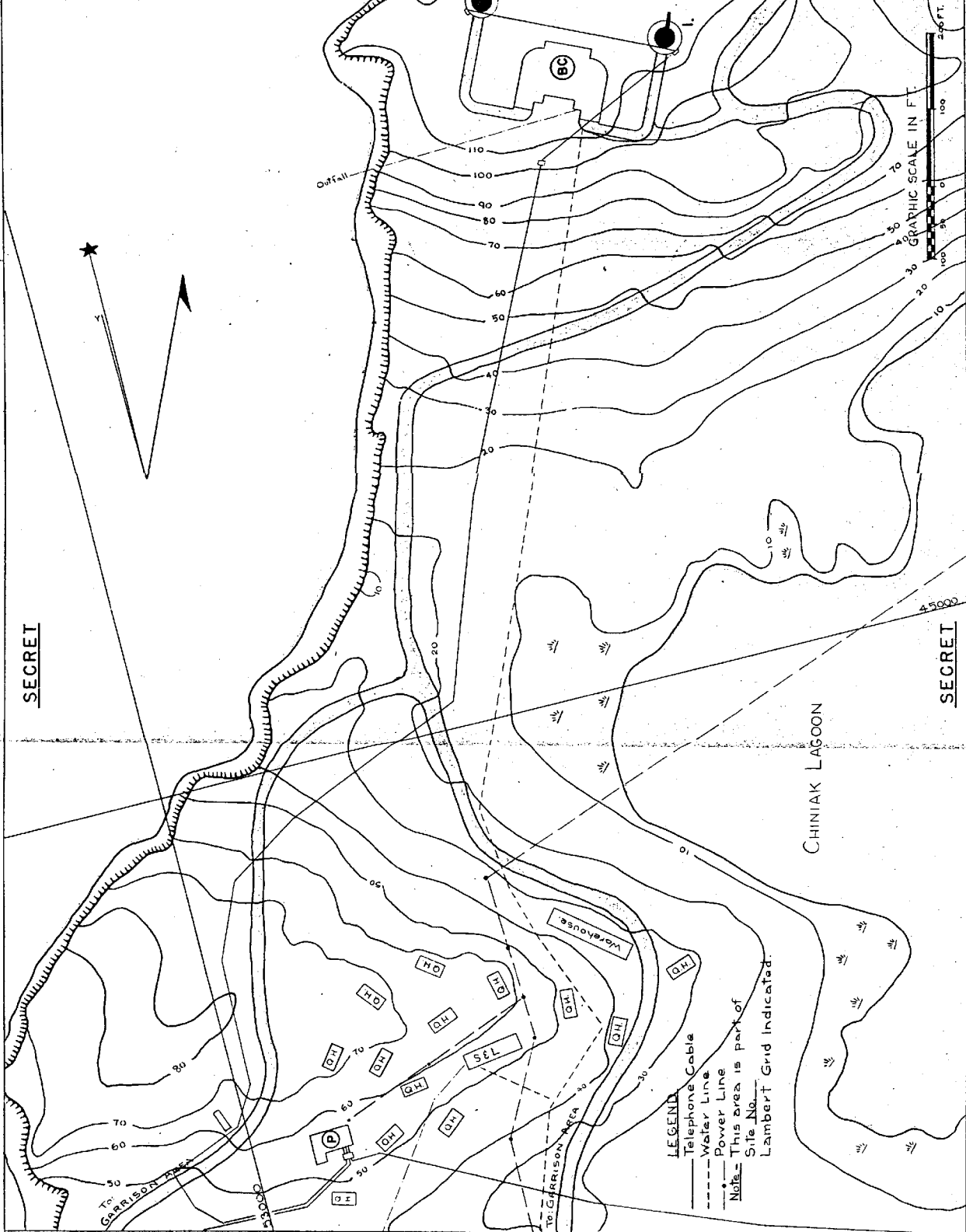
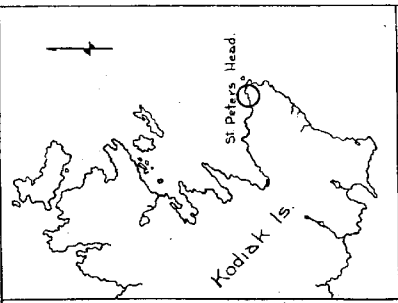
SECRET



SECRET

Δ	Date	Revision	Chkd	App'd
FIRE CONTROL INST. CHINIAC POINT EXHIBIT NO. 31B				
HARBOR DEFENSES OF KODIAK ALASKA				
Drawn, G. R. S.	Chkd, <i>Cow</i>	Scale, Shown		
Prepared, <i>W.P. Jensen</i>	Date, Sept. 44			
Approved, <i>P. L. Wall</i>	File, HD-P. 9.19			

SECRET



SECRET	
Date	Revision
Drawn	Checked/Approved
Prepared	Scale/Shown
Approved	Date
FIRE CONTROL INST. ST. PETERS HEAD EXHIBIT NO. 288	
HARBOR DEFENSES OF KODIAK ALASKA Approved: Col. A. W. ... Date: Oct. 4, 44	

SECRET

SECRET

LEGEND
 - - - Telephone Cable
 - - - Water Line
 - - - Power Line
 * This area is part of
 Note: This area is part of
 Site No. _____
 Lambert Grid Indicated.