

ANNUAL REPORT OF CONSTRUCTION AND REPAIR

Fiscal year ending June 30, 19 41

(1) BUILD- ING No.	(2) DESIGNATION OF BUILDINGS OR SYSTEMS	(3) BRIEF DESCRIPTION OF IMPORTANT REPAIR WORK ACCOMPLISHED DURING THE FISCAL YEAR, COSTING \$100 OR MORE	(4) REPAIR EXPENDITURES FOR THE PRESENT FISCAL YEAR		(5) TOTAL REPAIR EXPENDITURES FROM THE DATE THE BUILD- ING OR SYSTEM WAS CONSTRUCTED TO JUNE 30, PRESENT FISCAL YEAR		(6) TOTAL ORIGINAL COST, NOT INCLUDING REPAIRS, TO JUNE 30, PRESENT FISCAL YEAR		(7) COST OF NEW CON- STRUCTION (INCLUDING ALTERATIONS AND ADDITIONS BUT NOT REPAIRS) DURING THE PRESENT FISCAL YEAR		(8) REPLACEMENT VALUE JUNE 30, 19 41 PRESENT FISCAL YEAR	
	Perm. Bldgs.		\$		\$		\$		\$		\$	
1	N.C.O. Htrs.		187	87	2253	67	Unknown				3040	00
4	Q. M. Wharf		6	07	100	07	"		179	69	18972	00
5	Waiting Room				437	51	429	30			500	00
6	Reservoir						Unknown				150	00
		Sub-total	193	94	2791	25	429	30	179	69	22662	00
	Misc. Utilities											
	Grounds				1176	76	18455	00			160,000	00
	Ranges, Coal		10	50	51	71	61	87			62	00
	Elec. Refrig.				19	16	90	00			100	00
	Fire Equipment		3	06	22	63	110	38			110	00
	Elec. Lighting	Excavating for electric cable \$261.50; Install- ing Electric Service \$2853.40.							3114	90	3114	90
	Roads						Unknown				300	00
	Sewer Mains						"				337	75
	Walks				3115	80	"				2000	00
	Water Mains	Installing water main \$697.48; Excavating sub- marine water main trench \$746.66; Excavating and back-filling trench \$532.00.	2019	14	3334	23	Unknown				14000	00
		Sub-total	2035	70	7720	29	21832	15	3114	90	180109	75
		Grand total	2229	64	10511	54	22261	45	3294	59	202771	75
TOTAL												

(C. A.) (Dept.) Station Fort Duvall, Mass.

ANNUAL REPORT OF CONSTRUCTION AND REPAIR

Fiscal year ending June 30, 1940--

[illegible]

First (C. A.) (Dept.) Station Fort-Duval, Mass.

ANNUAL REPORT OF CONSTRUCTION AND REPAIR

Fiscal year ending June 30, 19 39-----

TOTAL

3-1791

(C. A.) (Dept.) Station

Fort Duvall, Mass.

RECORD OF EQUIPMENT AND CONDITION OF BUILDINGS

Date June 30, 1941

Reservation—Area 8.55 acres.

Name Fort Duvall

Location Hull, Massachusetts

Established 1922

Government-owned 8.55

_____ acres. Leased 0 acres.

Character of post Coast Artillery

Telegraph station Hingham, Massachusetts

Freight station Boston, Massachusetts

Capacity: Officers _____ 0

-; N. C. O. 11

Enl. men _____⁰

____; Animals _____

—; Motor veh. _____ C

—; Hosp. beds — 0

[illegible]

RECORD OF EQUIPMENT AND CONDITION OF BUILDINGS

Reservation—Area 8.55 acres.

Name Fort Duvall, Mass.

Location Hull Mass.

Established 1922

Government-owned 8.55

_____ acres. Leased 0 acres.

Character of post Coast Artillery

Telegraph station Hingham, Mass.

Freight station boston, Mass.

Capacity: Officers 0

—; N. C. O. 1 *ok*

Enl. men 0

____; Animals ____ 0

____; Motor veh. 0

____; Hosp. beds ____0

[illegible]

SEE OTHER SIDE

RECORD OF EQUIPMENT AND CONDITION OF BUILDINGS

Date June 30, 1939

Reservation—Area 8.55 acres.

Name	Fort Duvall, Mass.	Location	Hull, Mass.	Established	1922	Government-owned	8.55	acres.	Leased	0	acres.
------	--------------------	----------	-------------	-------------	------	------------------	------	--------	--------	---	--------

Character of post Coast Artillery Telegraph station Hingham, Mass. Freight station Boston, Mass.

Capacity: Off. 0; W. off. and ft. cls. 0; N. C. O. 1 ✓; Enl. men 0; Animals 0; Motor veh. 0; Hosp. beds 0

[illegible]

RECORD OF EQUIPMENT AND CONDITION OF UTILITIES

At <u>Fort Duvall, Mass.</u>										Date <u>June 30, 1940</u>									
RAILROADS	CONNECTING RAILROAD AT POST					TRACK GAUGE	WEIGHT OF RAIL	KIND OF RAIL	MAINTAINED BY—	GOVERNMENT OWNED		RAILROAD OWNED		TOTAL TURNOUTS	TOTAL MILES TRACK				
	None									MILES TRACK	TURNOUTS	MILES TRACK	TURNOUTS						
WHARVES	POST BLDG. No.	MATERIALS				DIMENSIONS		ELEVATION OF DECK		DEPTH OF MEAN LOW WATER	DIFFICULTIES IN MAINTAINING AND REPAIRING WHARF		REPAIRS MADE						
		SUBSTRUCTURE	DECK	SUPER-STRUCTURE	BACKFILL	TREATED OR UNTREATED	WHARF	APPROACH	H. W.	L. W.			KIND	DATE					
	4	Pile	Wood	Frame	Stone	Treated	40x186'	300x12'	4'	14'7"	12'	Insufficient depth of channel to accommodate repairing equipment of wharf.		None					
TARGET RANGES	LOCATION _____ AREA _____ GOVERNMENT OWNED _____ LEASED _____																		
	CONDITION	TARGETS INSTALLED		RANGE YARDS	TARGETS		BUTTS		TRENCH		FACILITIES								
		No.	TYPE		WIDTH	INTERVAL	WIDTH	LENGTH	WIDTH	HOW DRAINED									
	None		None								Water connections _____ Sewer connections _____ Telephone _____ Electric lights _____								
BOILER AND POWER PLANTS	IN BLDG. No.	CONDITION	ADDITIONS, ALTERATIONS, OR REPLACEMENTS IN EQUIPMENT					REFRIGERATING PLANTS	IN BLDG. No.	CONDITION	ADDITIONS, ALTERATIONS, OR REPLACEMENTS IN EQUIPMENT								
		None	None							None	None								
WATER PUMPING PLANTS		None	None					HEATING											
SEWAGE PUMPING PLANTS		None																	
FENCES	RESERVATION			INTERIOR															
	CONDITION	KIND	LENGTH	CONDITION	KIND	LENGTH													
		None			None														

INSTRUCTIONS.—This report will be prepared annually as directed in paragraph 8, A. R. 30-1770.
 Under the heading "Extensions, additions, alterations, or replacements" any changes that have been made in the equipment of the utility referred to during the present fiscal year will be reported. Opposite "Heating" report changes in the square feet of radiation installed in buildings or boilers in individual heating plants. If there have been no additions or alterations statement to that effect will be made.

RECORD OF EQUIPMENT AND CONDITION OF UTILITIES

Fort Duvall, Mass.

Date June 30, 1939.

RAILROADS														CONNECTING RAILROAD AT POST		TRACK GAUGE	WEIGHT OF RAIL	KIND OF RAIL	MAINTAINED BY—	GOVERNMENT OWNED		RAILROAD OWNED		TOTAL TURNOUTS	TOTAL MILES TRACK
																			MILES TRACK	TURNOUTS	MILES TRACK	TURNOUTS			
None																									

WHARVES	POST BLDG. No.	MATERIALS					DIMENSIONS		ELEVATION OF DECK		DEPTH OF MEAN LOW WATER	DIFFICULTIES IN MAINTAINING AND REPAIRING WHARF	REPAIRS MADE	
		SUBSTRUCTURE	DECK	SUPER-STRUCTURE	BACKFILL	TREATED OR UNTREATED	WHARF	APPROACH	H. W.	L. W.			KIND	DATE
4	Pile	Wood	Frame	Stone	Treated	40x186'	300x12'	4'	14'7"	12'	Insufficient depth of channel to accommodate repairing equipment of wharf.	None		

TARGET RANGES	LOCATION										AREA	GOVERNMENT OWNED		LEASED	
	CONDITION	TARGETS INSTALLED				RANGE YARDS	TARGETS		BUTTS		TRENCH		FACILITIES		
		No.	TYPE				WIDTH	INTERVAL	WIDTH	LENGTH	WIDTH	HOW DRAINED			
			None												
												Sewer connections.....			
												Telephone.....			
												Electric lights.....			

BOILER AND POWER PLANTS	IN BLDG. No.	CONDITION	ADDITIONS, ALTERATIONS, OR REPLACEMENTS IN EQUIPMENT	REFRIGERATING PLANTS	IN BLDG. No.	CONDITION	ADDITIONS, ALTERATIONS, OR REPLACEMENTS IN EQUIPMENT

WATER PUMPING PLANTS	IN BLDG. No.	CONDITION	ADDITIONS, ALTERATIONS, OR REPLACEMENTS IN EQUIPMENT	HEATING	IN BLDG. No.	CONDITION	ADDITIONS, ALTERATIONS, OR REPLACEMENTS IN EQUIPMENT

SEWAGE PUMPING PLANTS	IN BLDG. No.	CONDITION	ADDITIONS, ALTERATIONS, OR REPLACEMENTS IN EQUIPMENT	HEATING	IN BLDG. No.	CONDITION	ADDITIONS, ALTERATIONS, OR REPLACEMENTS IN EQUIPMENT

FENCES	RESERVATION			INTERIOR		
	CONDITION	KIND	LENGTH	CONDITION	KIND	LENGTH

INSTRUCTIONS.—This report will be prepared annually as directed in paragraph 8, A. R. 30-1770.

INSTRUCTIONS.—This report will be prepared annually as directed in paragraph 8, A. R. 30-1770.

Under the heading "Extensions, additions, alterations, or replacements" any changes that have been made in the equipment of the utility referred to during the present fiscal year will be reported. Opposite "Heating" report changes in the square feet of radiation installed in buildings or boilers in individual heating plants. If there have been no additions or alterations statement to that effect will be made.

3-6600

REFRIGERATORS AND LOCKERS

[illegible]

RECORD OF EQUIPMENT AND CONDITION OF UTILITIES

At Fort Duvall, Mass.

Date June 30, 1938.

RAILROADS	CONNECTING RAILROAD AT POST		TRACK GAUGE	WEIGHT OF RAIL	KIND OF RAIL	MAINTAINED BY—	GOVERNMENT OWNED		RAILROAD OWNED		TOTAL TURNOUTS	TOTAL MILES TRACK
	None						MILES TRACK	TURNOUTS	MILES TRACK	TURNOUTS		

WHARVES	POST BLDG. No.	MATERIALS					DIMENSIONS		ELEVATION OF DECK		DEPTH OF MEAN LOW WATER	DIFFICULTIES IN MAINTAINING AND REPAIRING WHARF	REPAIRS MADE	
		SUBSTRUCTURE	DECK	SUPER-STRUCTURE	BACKFILL	TREATED OR UNTREATED	WHARF	APPROACH	H. W.	L. W.			KIND	DATE
	4	Pile	Wood	Frame	Stone	Treated	40x186'	300x12'	4'	14'7"	12'	Insufficient depth of channel to accommodate repairing equipment of wharf.	None	

TARGET RANGES	LOCATION		AREA		GOVERNMENT OWNED		LEASED				
	CONDITION	TARGETS INSTALLED		RANGE YARDS	TARGETS		BUTTS		TRENCH		FACILITIES
		No.	TYPE		WIDTH	INTERVAL	WIDTH	LENGTH	WIDTH	HOW DRAINED	
		None									Water connections Sewer connections Telephone Electric lights

BOILER AND POWER PLANTS	IN BLDG. No.	CONDITION	ADDITIONS, ALTERATIONS, OR REPLACEMENTS IN EQUIPMENT	REFRIGERATING PLANTS	IN BLDG. No.	CONDITION	ADDITIONS, ALTERATIONS, OR REPLACEMENTS IN EQUIPMENT

WATER PUMPING PLANTS	IN BLDG. No.	CONDITION	ADDITIONS, ALTERATIONS, OR REPLACEMENTS IN EQUIPMENT	HEATING	IN BLDG. No.	CONDITION	ADDITIONS, ALTERATIONS, OR REPLACEMENTS IN EQUIPMENT

SEWAGE PUMPING PLANTS	IN BLDG. No.	CONDITION	ADDITIONS, ALTERATIONS, OR REPLACEMENTS IN EQUIPMENT	HEATING	IN BLDG. No.	CONDITION	ADDITIONS, ALTERATIONS, OR REPLACEMENTS IN EQUIPMENT

FENCES	RESERVATION			INTERIOR		
	CONDITION	KIND	LENGTH	CONDITION	KIND	LENGTH

INSTRUCTIONS.—This report will be prepared annually as directed in paragraph 8, A. R. 30-1770.

Under the heading "Extensions, additions, alterations, or replacements" any changes that have been made in the equipment of the utility referred to during the present fiscal year will be reported. Opposite "Heating" report changes in the square feet of radiation installed in buildings or boilers in individual heating plants. If there have been no additions or alterations statement to that effect will be made.

RECORD OF EQUIPMENT AND CONDITION OF UTILITIES

At Fort Duvall, Mass.

Date June 30, 1937

RAILROADS	CONNECTING RAILROAD AT POST		TRACK GAUGE	WEIGHT OF RAIL	KIND OF RAIL	MAINTAINED BY—	GOVERNMENT OWNED		RAILROAD OWNED		TOTAL TURNOUTS	TOTAL MILES TRACK
	MILES TRACK	TURNOUTS					MILES TRACK	TURNOUTS				
	None											

WHARVES	POST BLDG. No.	MATERIALS					DIMENSIONS		ELEVATION OF DECK		DEPTH OF MEAN LOW WATER	DIFFICULTIES IN MAINTAINING AND REPAIRING WHARF	REPAIRS MADE	
		SUBSTRUCTURE	DECK	SUPERSTRUCTURE	BACKFILL	TREATED OR UNTREATED	WHARF	APPROACH	H. W.	L. W.			KIND	DATE
	4	Pile	Wood	Frame	Stone	Treated	40X186'	300X12'	4'	14'7"	12'	Insufficient depth of channel to accommodate repairing equipment of wharf.	None	

TARGET RANGES	LOCATION		AREA		GOVERNMENT OWNED		LEASED				
	CONDITION	TARGETS INSTALLED		RANGE YARDS	TARGETS		BUTTS		TRENCH		FACILITIES
		No.	TYPE		WIDTH	INTERVAL	WIDTH	LENGTH	WIDTH	HOW DRAINED	
			None								Water connections Sewer connections Telephone Electric lights

BOILER AND POWER PLANTS	IN BLDG. No.	CONDITION	ADDITIONS, ALTERATIONS, OR REPLACEMENTS IN EQUIPMENT	REFRIGERATING PLANTS	IN BLDG. No.	CONDITION	ADDITIONS, ALTERATIONS, OR REPLACEMENTS IN EQUIPMENT

WATER PUMPING PLANTS	IN BLDG. No.	CONDITION	ADDITIONS, ALTERATIONS, OR REPLACEMENTS IN EQUIPMENT	HEATING	IN BLDG. No.	CONDITION	ADDITIONS, ALTERATIONS, OR REPLACEMENTS IN EQUIPMENT

SEWAGE PUMPING PLANTS	IN BLDG. No.	CONDITION	ADDITIONS, ALTERATIONS, OR REPLACEMENTS IN EQUIPMENT	HEATING	IN BLDG. No.	CONDITION	ADDITIONS, ALTERATIONS, OR REPLACEMENTS IN EQUIPMENT

FENCES	RESERVATION			INTERIOR		
	CONDITION	KIND	LENGTH	CONDITION	KIND	LENGTH
		None			None	

INSTRUCTIONS.—This report will be prepared annually as directed in paragraph 8, A. R. 30-1770.

Under the heading "Extensions, additions, alterations, or replacements" any changes that have been made in the equipment of the utility referred to during the present fiscal year will be reported. Opposite "Heating" report changes in the square feet of radiation installed in buildings or boilers in individual heating plants. If there have been no additions or alterations statement to that effect will be made.

RECORD OF EQUIPMENT AND CONDITION OF UTILITIES

At Fort Duvall, Mass.

Date June 30, 1936.

[illegible]

RECORD OF EQUIPMENT AND CONDITION OF UTILITIES

At Fort Duvall, Mass.

Date June 30, 1936.

RAILROADS	CONNECTING RAILROAD AT POST		TRACK GAUGE	WEIGHT OF RAIL	KIND OF RAIL	MAINTAINED BY—	GOVERNMENT OWNED		RAILROAD OWNED		TOTAL TURNOUTS	TOTAL MILES TRACK
	MILES TRACK	TURNOUTS	MILES TRACK	TURNOUTS								
	None											

WHARVES	POST BLDG. No.	MATERIALS					DIMENSIONS		ELEVATION OF DECK		DEPTH OF MEAN LOW WATER	DIFFICULTIES IN MAINTAINING AND REPAIRING WHARF	REPAIRS MADE	
		SUBSTRUCTURE	DECK	SUPER-STRUCTURE	BACKFILL	TREATED OR UNTREATED	WHARF	APPROACH	H. W.	L. W.			KIND	DATE
	4	Pile	Wood	Frame	Stone	Treated	40x186'	300x12'	4'	14'7"	12'	Insufficient depth of channel to accomodate repairing equipment of wharf	None	

TARGET RANGES	LOCATION		AREA		GOVERNMENT OWNED		LEASED				
	CONDITION	TARGETS INSTALLED		RANGE YARDS	TARGETS		BUTTS		TRENCH		FACILITIES
		No.	TYPE		WIDTH	INTERVAL	WIDTH	LENGTH	WIDTH	HOW DRAINED	
			None								Water connections
											Sewer connections
											Telephone
											Electric lights

BOILER AND POWER PLANTS	IN BLDG. No.	CONDITION	ADDITIONS, ALTERATIONS, OR REPLACEMENTS IN EQUIPMENT		REFRIGERATING PLANTS	IN BLDG. No.	CONDITION	ADDITIONS, ALTERATIONS, OR REPLACEMENTS IN EQUIPMENT	
		None	None				None	None	

WATER PUMPING PLANTS	IN BLDG. No.	CONDITION	ADDITIONS, ALTERATIONS, OR REPLACEMENTS IN EQUIPMENT		HEATING	IN BLDG. No.	CONDITION	ADDITIONS, ALTERATIONS, OR REPLACEMENTS IN EQUIPMENT	
		None	None				None		

SEWAGE PUMPING PLANTS	IN BLDG. No.	CONDITION	ADDITIONS, ALTERATIONS, OR REPLACEMENTS IN EQUIPMENT		HEATING	IN BLDG. No.	CONDITION	ADDITIONS, ALTERATIONS, OR REPLACEMENTS IN EQUIPMENT	
		None	None				None		

FENCES	RESERVATION			INTERIOR		
	CONDITION	KIND	LENGTH	CONDITION	KIND	LENGTH
		None			None	

INSTRUCTIONS.—This report will be prepared annually as directed in paragraph 8, A. R. 30-1770.

Under the heading "Extensions, additions, alterations, or replacements" any changes that have been made in the equipment of the utility referred to during the present fiscal year will be reported. Opposite "Heating" report changes in the square feet of radiation installed in buildings or boilers in individual heating plants. If there have been no additions or alterations statement to that effect will be made.

ELECTRIC LIGHTING AND POWER

At Fort Duvall, Mass.

Date December 31, 1939

1. Post generating plant, active or inactive ----- Original cost -----
 Date completed ----- Total capacity -----

2. If purchased, give name and address of contracting firm -----

3. Incoming lines at reservation boundary: Voltage ----- Phase -----
 Frequency ----- Number of conductors ----- Aerial or underground -----
 Length of line from contractor's plant or substation, in miles ----- or feet -----

4. Service lines from reservation boundary to substation: Owner -----
 Length, in miles ----- or feet ----- Aerial or underground -----
 Number of: Poles ----- Manholes ----- Height of poles ----- How treated -----
 Kind of: Poles ----- Manholes ----- Duct -----

5. Substation: Original cost ----- Date completed -----
 Type of construction ----- Dimensions -----
 Main transformer bank: Owner -----
 Quantity ----- Manufacturer -----
 Name-plate data -----

Mounted outdoor or indoor ----- Connection of windings: Primary ----- Secondary -----
 Lightning arresters: Quantity ----- Manufacturer -----
 Name-plate data -----
 Where and how mounted -----
 Switchboard: Material ----- Dimensions -----
 Number of panels ----- Number of oil breakers ----- Number of air switches -----
 List of instruments -----

Number of circuits leaving station ----- Aerial or underground -----
 Voltage regulators: Quantity ----- Manufacturer -----
 Name-plate data -----

Street-lighting regulators: Quantity ----- Manufacturer -----
 Name-plate data -----

Other Government-owned apparatus -----

Apparatus owned by contractor, including metering facilities -----

6. Distribution system: Original cost _____ Date completed _____

Aerial or underground _____ Phase _____ Number of conductors _____

Voltage: Primary _____ Secondary: Power _____ Light _____

Length, in miles _____ or feet _____ Number of poles _____ Kind of poles _____

Number of: Cross arms _____ Insulators _____ Manholes _____

Kind of: Cross arms _____ Insulators _____

Kind of: Manholes _____ Duct lines _____

Number of lightning arresters _____ Type _____ Manufacturer _____

Number of distribution transformers in service _____ Aggregate K. V. A. _____

Method of mounting transformers _____

Method of grounding arresters, tanks and neutral _____

7. Exterior lighting system: Original cost _____ Date completed _____

Series or multiple _____ Voltage or amperage _____

Number of lamps _____ Wattage or lumens _____

B. & S. gauge of conductors _____ Length of system _____

Type of fixtures _____ How mounted _____

8. Interior installations: Lighting, total kilowatts connected _____ 950 watts

Ranges: Total kilowatts connected _____ Number installed _____

Water heaters: Total kilowatts connected _____ Number installed _____

Air heaters: Total kilowatts connected _____ Number installed _____

Fans: Number of A. C. installed _____ Number of D. C. installed _____

Motors: A. C., total horsepower connected _____ 1/6 _____ Number installed _____ 1

Motors: D. C., total horsepower connected _____ Number installed _____

List miscellaneous Government-owned apparatus, giving group designations, total quantities, and total kilowatt ratings: 1 Delco Light plant (#8RA1) complete with gasoline engine, Capacity 800 watts, 110 volts, AC, 60 cycle

Privately owned appliances: Total kilowatts connected (estimated) _____ 1/2 KW

Enter pertinent information on motors, except desk and bracket fans on reverse side of this sheet.

9. This space for use of O. Q. M. G.

[illegible]

INSTRUCTIONS.—This form is for permanent record and will be used when new systems or extensive additions are completed and turned over for use.

Forms will be prepared in triplicate. One copy of each form will be retained at the station where prepared, one copy will be forwarded to the Department or Corps Area Commander, and one copy (the original) will be forwarded to the Quartermaster General. At independent stations, forms will be prepared in duplicate, one copy will be retained at the station and the original will be forwarded to the Quartermaster General.

Slight modifications, alterations, or additions will be promptly reported to the Quartermaster General, giving all particulars with indication as to the nature of the change. It is not necessary to submit new forms when reporting such slight modifications, etc. Inasmuch as these forms are used to check upon the electric system in operation, entries hereon will be checked annually, or oftener, if necessary, and reported for correction. Entries hereon will be considered accurate at all times.

As of 7/31/41:

4 7/31/41
 1st. owned 2nd. owned lines - .5 mile
 3rd. owned lines - .25 mile

WATER-SUPPLY SYSTEM

At Fort Duval, Mass.

Date January 24, 1930.

Source of water supply purchased from Town of Hingham, Mass.

Sanitary conditions surrounding source of supply Good

Quality of water Good

Has the capacity of the supply been fully developed? Not known

Describe distribution system During drill season while temporary 2" line is connected pressure Metropolitan Pumping Plant when temporary line is disconnected, gravity from tank.

3-9773

FILTRATION				SOFTENER			CHEMICAL FEED AND STERILIZING EQUIPMENT						
	SEDIMENTATION BASIN	FILTERS	CLEAR-WATER BASIN		SOFTENER TANKS	BRINE TANKS	CHLORINATORS						
							NUMBER	CAPACITY	MAKE	TYPE	COST	DATE INSTALLED	
Number	None	None	None	Make	None	None	None	None	None	None	None	None	
Dimensions				No. units									
Material				Dimensions			DRY FEED MACHINES						
Capacity				Capacity			NUMBER	CHEM. USED	CAPACITY	MAKE	HOW DRIVEN	COST	DATE INSTALLED
Cost				Material			None	None	None	None	None	None	None
Date installed				Cost			SOLUTION FEED EQUIPMENT						
Type				Date installed			NUMBER	SIZE TANKS	CHEMICAL USED	HOW CONTROLLED	COST	DATE INSTALLED	
Bldg. No.				Building No.			None	None	None	None	None	None	
				Kind of zeolite									
				Capacity per regeneration		Kilograms							

WELLS										WATER METERS				
NO. OF WELL	KIND	DEPTH	DIAM.	MANNER PUMPED	CAPACITY, G. P. M.	COST	DATE INSTALLED	WATER LEVEL		NUMBER	MAKE	TYPE	SIZE	BUILDING NO.
								Standing	Draw Down					
None	None	None	None	None	None	None	None	None	None	None	None	None	None	None

WATER MAINS								WATER ANALYSIS				Parts per Million							
MATERIAL		DIAM.	LENGTH	SOURCE SUPPLY	CLASS	COST	DATE INSTALLED	Date of analysis	Total hardness (as CaCO ₃)	Alkalinity to methyl orange (as CaCO ₃)	Hydrogen ion concentration (pH)	Total iron	Magnesium	Calcium	Sulphates (as SO ₄)	Chlorides (as Cl)	Sodium and Potassium (as Na)	Average Color	Average Turbidity
Mains	Joint																		
None	None	None	None	None	None	None	None	11/12/29	15	(not obtainable)	"	"	.140	(not obtainable)	"	"	6.80	1.6	None
								Where made at											
								State Laboratory											
								Boston, Mass.											
								Where collected at											
								tap in Town											
								Hingham, Mass											

TANKS, RESERVOIRS, CISTERNS, ETC.										PRESSURE		
BUILDING NO.	MATERIAL	DIMENSIONS	SOURCE SUPPLY	CAPACITY, GALLONS	TRESTLE		ELEV. HIGH WATER		COST	DATE INSTALLED	AT HIGHEST FIRE HYDRANT	AT LOWEST FIRE HYDRANT
					Height	Material	Pump	Flagpole				
None	None	None	None	None	None	None	None	None	None	None	None	None

Number fire hydrants None
Standpipes for sprinkling carts (number) None

WATER-SUPPLY SYSTEM—CONTINUED

Remarks: A temporary 2" pipe line is installed during the drill season

A temporary storage tank of 800 gallons capacity has been installed for the use of the caretaker

INSTRUCTIONS

In description of distribution system, state whether a gravity system or water is pumped into an elevated tank or reservoir.

BUILDING NUMBER.—Give post building number of structure or building in which apparatus is installed.

FILTRATION

MATERIAL.—State whether wood, steel, concrete, etc.

CAPACITY OF FILTER.—Give gallons filtered per minute.

TYPE OF FILTER.—State whether gravity or pressure.

SOFTENER

CAPACITY OF SOFTENER TANKS.—State total gallons of softened water per regeneration.

CAPACITY OF BRINE TANKS.—State pounds of salt tanks hold.

KIND OF ZEOLITE.—State whether green sand, or, if synthetic, give trade name.

TOTAL CAPACITY PER REGENERATION.—Give number of kilograins (1 kilograin = 1,000 grains) of hardness removed per unit per regeneration.

CHEMICAL FEED AND STERILIZING EQUIPMENT

NUMBER.—Give the number of chlorinators, dry feed machines, or solution tanks in the installation referred to.

WELLS

NUMBER OF WELL.—Give number used in reports and references.

KIND.—State whether dug or drilled.

MANNER PUMPED.—State whether air lift, deep-well pump, or flowing.

WATER LEVEL.—Distance from ground level to water.

DRAW DOWN.—Give distance from ground to water level at capacity stated.

WATER METERS

TYPE.—State whether disk, current, Venturi, or compound.

WATER MAINS

MATERIAL.—State whether cast iron, steel, concrete, wood-stave, etc. State material used in calking joint.

SOURCE OF SUPPLY.—If a gravity flow, state tank or reservoir; if pumped, give number of pumping plant.

CLASS.—If cast iron, American Water Works Standard, state whether Class A, B, C, or D.

If centrifugally cast iron, state whether Class 150, 250, etc.

If steel, concrete, wood-stave, give maximum pressure pipe is designed to withstand.

WATER ANALYSIS

Give results of latest analysis of sample from post distribution system.

Give date and where analysis was made.

TANKS, RESERVOIRS, ETC.

MATERIAL.—Give material used in construction.

SOURCE SUPPLY.—Give building number in which pumping plant is installed as shown on Water Pumping Plant Data Sheet, Form No. 107.

ELEVATION HIGH WATER.—Give elevation above pump and base of flagpole.

REMARKS.—Give any information necessary to make statements clear; also state any unusual or novel features in connection with the water-supply system.

This form is for permanent record and will be used only when new installations are made, or extensive alterations or additions are first completed and turned over for use.

Forms will be prepared in triplicate. One copy of each form will be retained at the station where prepared, one copy will be forwarded to the Department or Corps Area Commander, and one copy (the original) will be forwarded to the Quartermaster General. At independent stations forms will be prepared only in duplicate, one copy for retention at the station, and the other for submission to the Quartermaster General.

Slight modifications, alterations, or additions will be reported promptly upon completion of the work to the Quartermaster General, as directed in par. 7, AR 30-1770.

Date January 22, 1930

Means of disposal of sewage None

SEWAGE-TREATMENT PLANTRemarks:[illegible]

INDIVIDUAL HEATING PLANTS

At Fort Duvall, Mass.

3-9639

Date June 30, 1939.

[illegible]

(SEE OTHER SIDE)

ry

1901

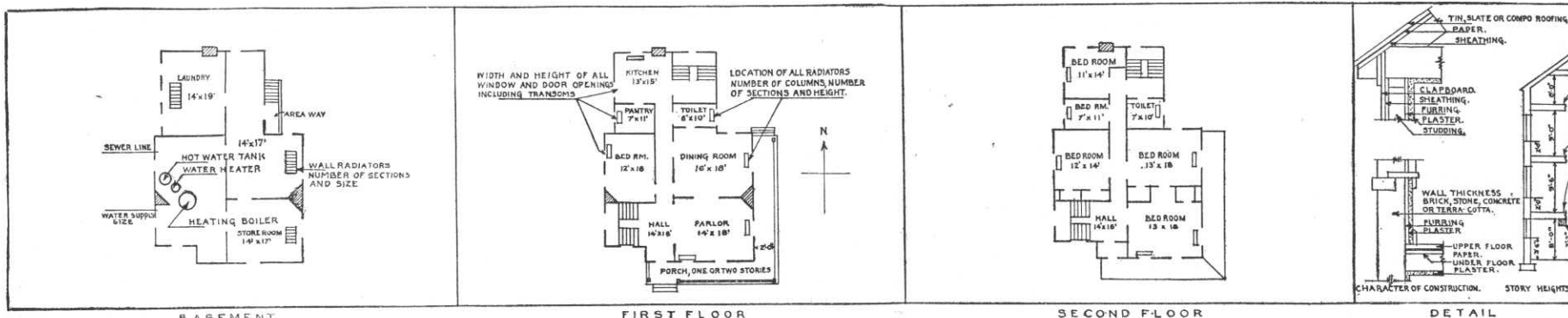
A.C. 928

A black and white photograph showing two houses. On the left is a two-story house with a chimney. On the right is a single-story house with a porch. A curved road or path is in the foreground. The image is oriented horizontally on the page.

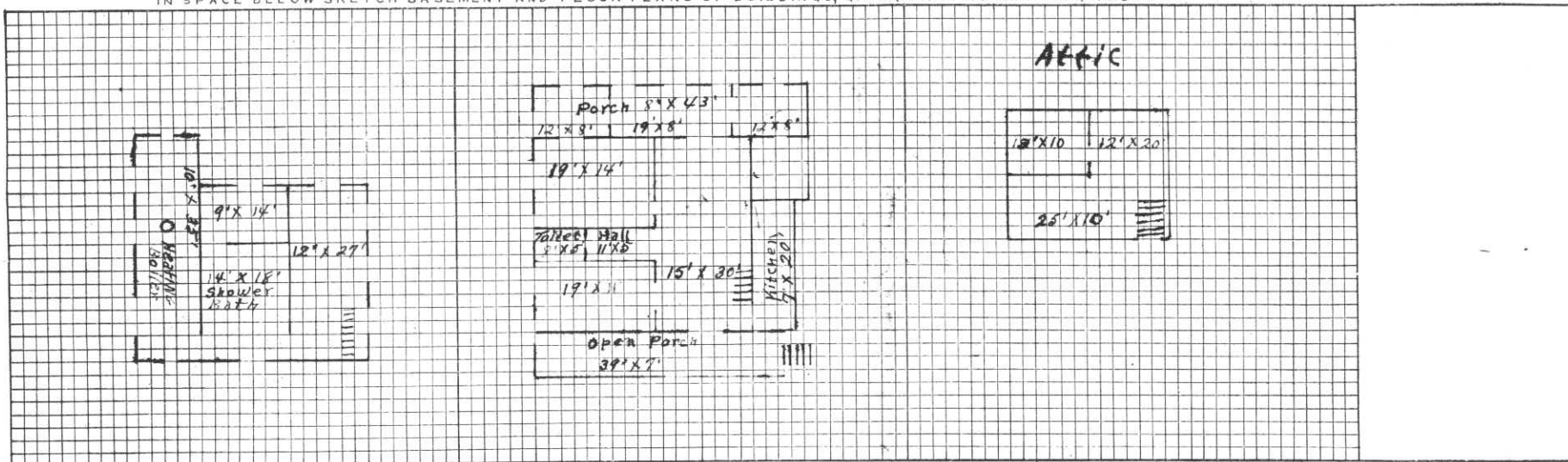
(Below enter chronologically all modifications, additions, introductions of water, sewer, lights, heating, etc.)

[illegible]

GOVERNMENT PRINTING OFFICE



IN SPACE BELOW SKETCH BASEMENT AND FLOOR PLANS OF BUILDINGS, GIVING DATA AS PER PLANS ABOVE



REMARKS.

1 Square = 2', Inside dimensions

INSTRUCTIONS

If plans of building are available, forward copy of same showing information called for above. These plans should be checked against the building and any variations from same in the building as constructed should be noted.

If plans are not available make sketch plans and elevation in spaces above. The plans shown are typical of "quarters." Similar plans may be made for all types of buildings. There are 10 squares to the inch. Each square will represent 1', 2', 4', or 8', etc., as may be necessary to show entire building in the space allowed. Show inside dimensions and designation of each room. Indicate location of water and sewer connections. In space under heading "Details" show character of construction, story heights, etc.

O. Q. M. G.: Plan No. Unknown Building No. 4

Place Fort Duvall, Boston Harbour Mass
Designation of building WHARF Capacity _____
Total cost, \$ 23,715 Date completed Feb 4, 1920
Material: Walls _____ Foundation Piling
Roof _____ Floors Wood 3" Hard Pine
Total floor area ~~11,500 sq ft~~ square feet 7440
Size: Main building 40' X 186' Wings _____ Basement _____
a _____ Height of first floor above ground _____
(How heated) _____
b _____ How lighted _____
(Type of heat) _____ Water connections _____
c _____ Sewer connections _____
(Type of domestic hot water heater) _____ Gas connections _____

COOKING RANGES INSTALLED **METERS INSTALLED**

Coal, No. _____ Gas, No. _____
Gas, No. _____ Electric, No. _____
Electric, No. _____ Oil, No. _____
Oil, No. _____ Steam, No. _____
Steam, No. _____ Water, No. _____



ADDITIONS AND INSTALL

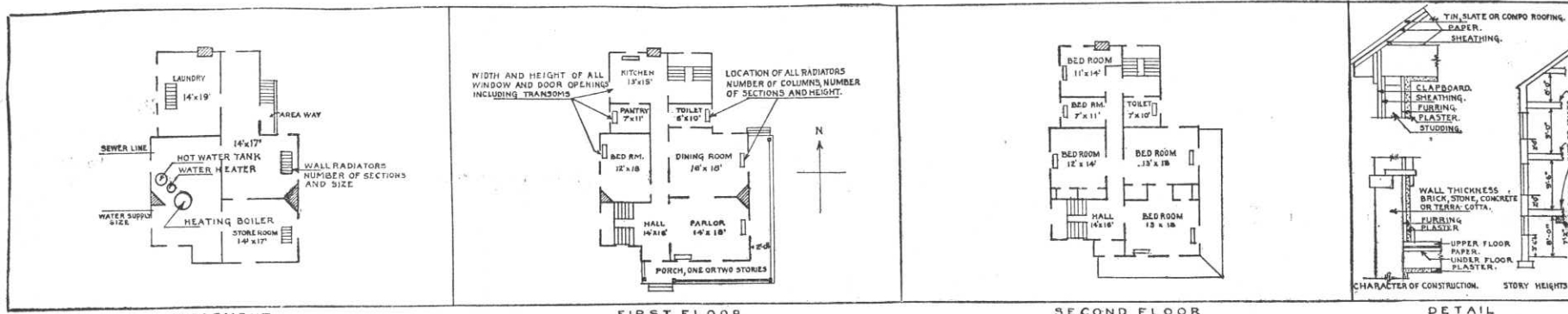
(Below enter chronologically all modifications, additions, introductions of water, sewer, lights, heating, etc.)

; 1928.

[illegible]

INSTRUCTIONS.—“a” State whether heated from central heating or by individual heating plants, stoves, furnaces, or fireplaces.
 “b” State whether steam, vapor, hot water, or hot air.
 “c” State whether gas, coal, oil, or central heating plant.

See reverse side of form.



IN SPACE BELOW SKETCH BASEMENT AND FLOOR PLANS OF BUILDINGS, GIVING DATA AS PER PLANS ABOVE

276' x 12'
 Cable P.R.

REMARKS

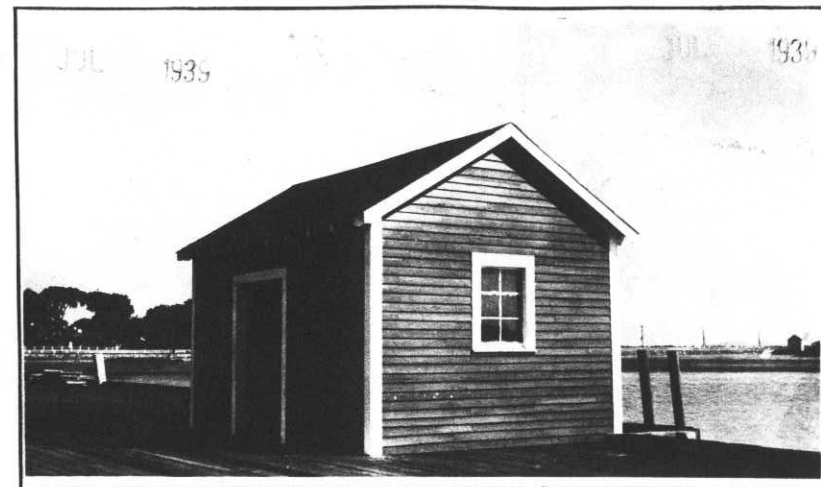
1 Square = 8'

INSTRUCTIONS

If plans of building are available, forward copy of same showing information called for above. These plans should be checked against the building and any variations from same in the building as constructed should be noted.

If plans are not available make sketch plans and elevation in spaces above. The plans shown are typical of "quarters." Similar plans may be made for all types of buildings. There are 10 squares to the inch. Each square will represent 1', 2', 4', or 8', etc., as may be necessary to show entire building in the space allowed. Show inside dimensions and designation of each room. Indicate location of water and sewer connections. In space under heading "Details" show character of construction, story heights, etc.

Gas	None
Electric	None
Oil	None
Steam	None
Water	None



(Below enter chronologically all modifications, additions, introductions of water, sewer, lights, heating, etc.)

[illegible]

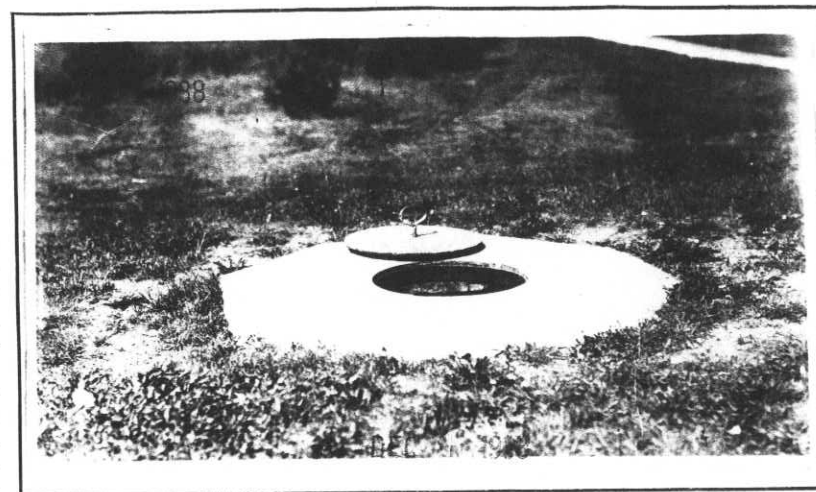
3-8891

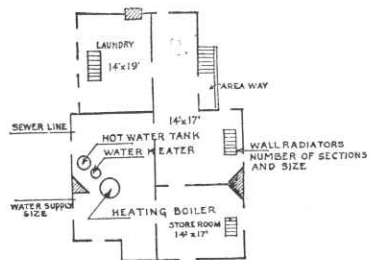
A black and white photograph of a small, dark wooden shed with a gabled roof. The shed has a single window with a white frame and a dark door. It is situated on a grassy area next to a body of water, with a fence visible in the background. The image is framed by a white border.

(Below enter chronologically all modifications, additions, introductions of water, sewer, lights, heating, etc.)

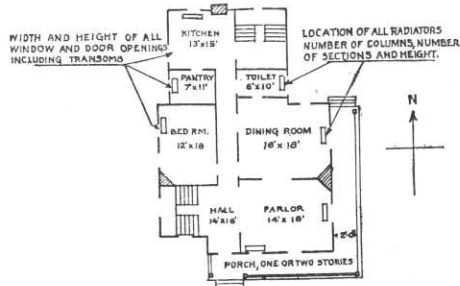
[illegible]

See reverse side of form.

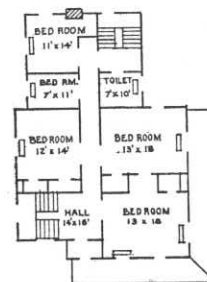




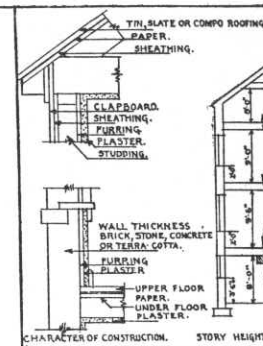
BASEMENT



FIRST FLOOR

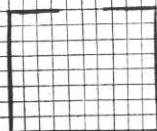


SECOND FLOOR



DETAIL

IN SPACE BELOW SKETCH BASEMENT AND FLOOR PLANS OF BUILDINGS, GIVING DATA AS PER PLANS ABOVE



REMARKS

Scale 1' to square

INSTRUCTIONS

If plans of building are available, forward copy of same showing information called for above. These plans should be checked against the building and any variations from same in the building as constructed should be noted.

If plans are not available make sketch plans and elevation in spaces above. The plans shown are typical of "quarters." Similar plans may be made for all types of buildings. There are 10 squares to the inch. Each square will represent 1', 2', 4', or 8', etc., as may be necessary to show entire building in the space allowed. Show inside dimensions and designation of each room. Indicate location of water and sewer connections. In space under heading "Details" show character of construction, story heights, etc.