

EDITION OF: MAR 14 1916.
REVISIONS: FEB. 1 1921.

SERIAL NUMBER

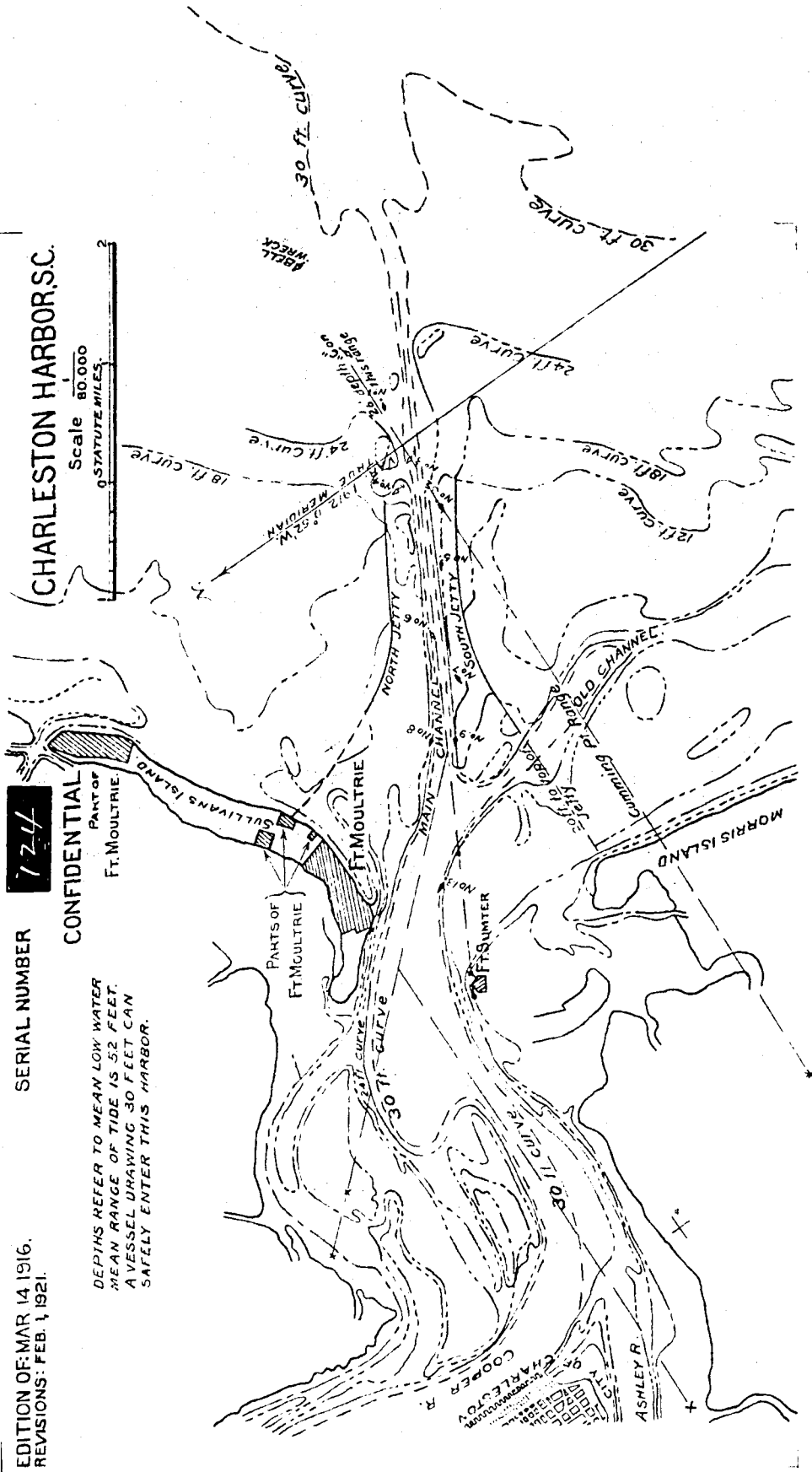
1717

CHARLESTON HARBOR, S.C.

CONFIDENTIAL

DEPTHS REFER TO MEAN LOW WATER
MEAN RANGE OF TIDE IS 52 FEET.
VESSEL DRAWING 30 FEET CAN
SAFELY ENTER THIS HARBOR.

Scale 80,000
STATUTE MILES.



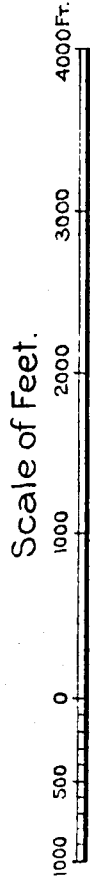
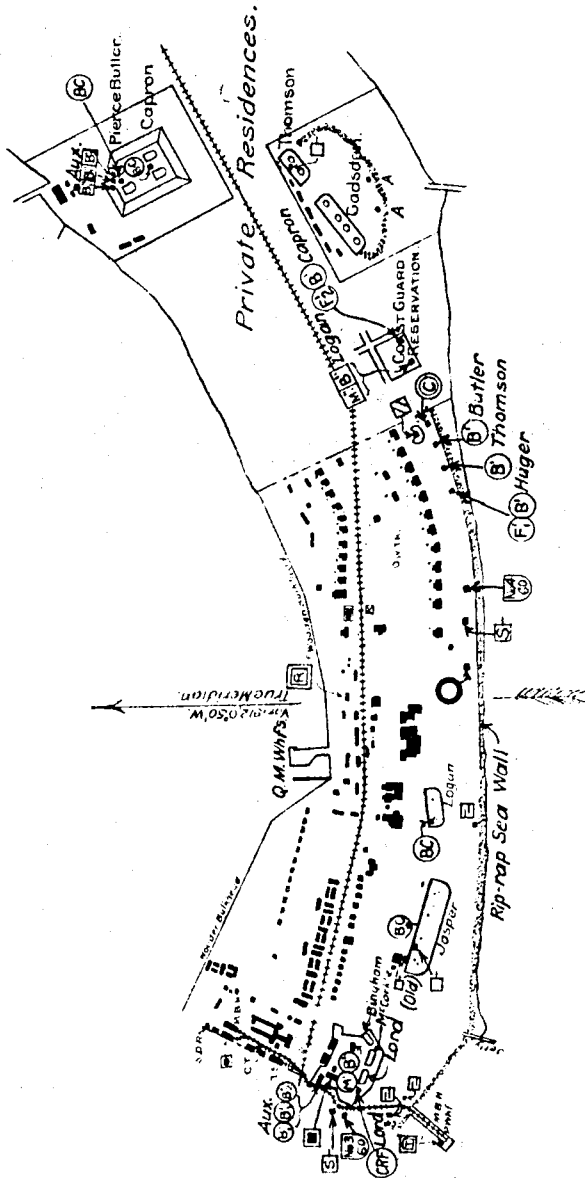
EDITION OF APR. 23 1915.
REVISIONS: DEC. 7, 1915; MAR. 14, 1916.
NOV. 8, 1916; FEB. 1, 1921.

SERIAL NUMBER **124**
CONFIDENTIAL.

CHARLESTON HARBOR, S.C.
FORT MOULTRIE

SULLIVAN'S ISLAND
GENERAL MAP.

BATTERIES.
PIERCE BUTLER 4-12" M.
CAPRON 4-12" M.
JASPER 4-10" Dis.
THOMSON 2-10" P.
LOGAN 1-6" P.
GADSDEN
BINGHAM
McCORKLE
LORD 2-3" P.
A. Anti Aircraft Guns.

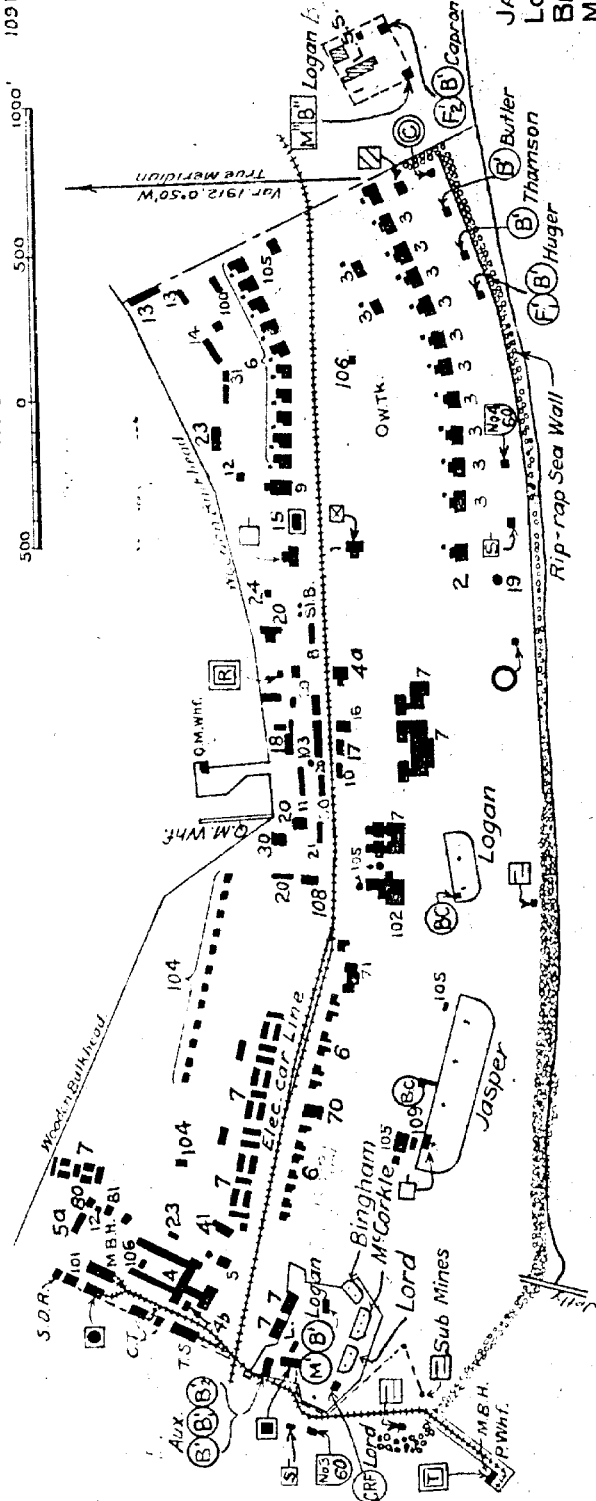


CHARLESTON HARBORS, C.
FORT MOULTRIE-DI.
 SULLIVAN'S ISLAND, S.C.
 WESTERN PORTION.

SERIAL NUMBER **724**
CONFIDENTIAL.

EDITION OF APR. 23, 1915.
 REVISIONS: DEC. 7, 1915; MAR. 14, 1916.
 NOV. 8, 1916; FEB. 1, 1921.

- LEGEND.**
- 1 ADMINISTRATION BLDG.
 - 2 COMMANDING OFFICERS QRS.
 - 3 OFFICERS QUARTERS.
 - 3a BACH. OFFICERS QRS.
 - 4 HOSPITAL.
 - 4a DISPENSARY.
 - 4b DEAD HOUSE.
 - 5 HOSPITAL STEWARD'S QRS.
 - 5a N.C. OFFICERS QRS.
 - 7 BARRACKS.
 - 8 GUARD HOUSE.
 - 9 POST EXCHANGE.
 - 10 ENGR. OFFICE (ARTY.)
 - 11 COAL SHED.
 - 12 OIL HOUSE.
 - 13 STABLE.
 - 14 WORK SHOP.
 - 15 RESERVOIR.
 - 16 FIRE HOUSE.
 - 17 BAKE HOUSE.
 - 18 LAUNDRY.
 - 19 BAND STAND.
 - 20 Q.M. STOREHOUSE.
 - 21 COM. STOREHOUSE.
 - 22 GARAGE (Q.M.).
 - 23 WOOD SAW (ELEC.).
 - 30 ORD. STOREHOUSE.
 - 31 ORD. WORK SHOP.
 - 41 ENGR. STOREHOUSE.
 - 70 CHURCH.
 - 71 SERVICE CLUB.
 - 72
 - 100 WAGON SHED.
 - 101 OLD BAKE HOUSE.
 - 102 BAND BARRACKS.
 - 104 MARRIED ENLISTED MEN.



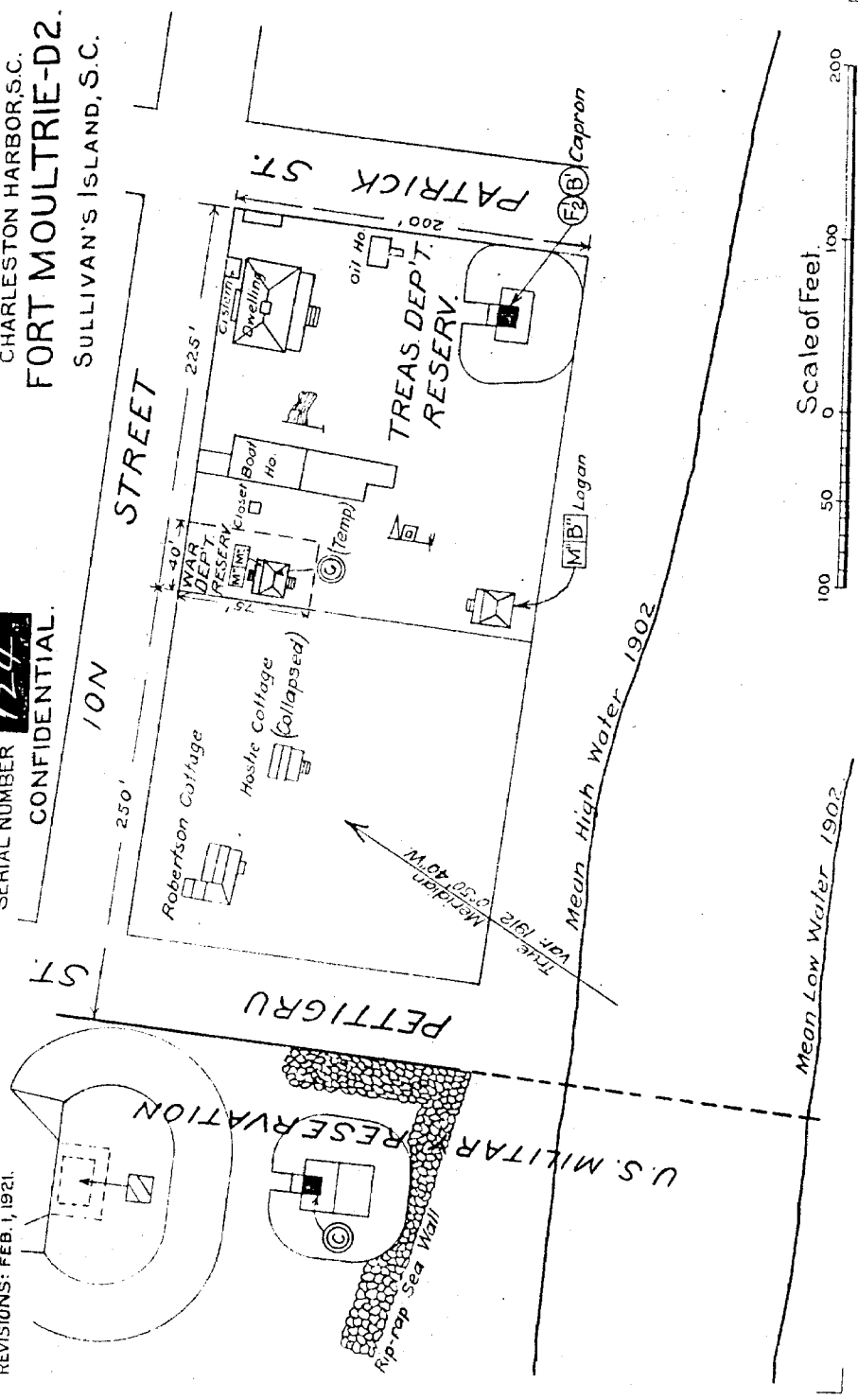
- BATTERIES.**
- JASPER.....4-10" DIS.
 - LOGAN.....1-6"
 - BINGHAM.....
 - McCORKLE.....
 - LORD.....2-3" P.

- 105 CISTERNS.
 106 FOWL HOUSE.
 107 OUT HOUSE.
 5a NURSES QUARTERS.
 103 SCALES.
 108 WAR GAME HOUSE.
 109 POWERHOUSE (ABANDONED).

EDITION OF APR 23, 1915.
REVISIONS: FEB 1, 1921.

SERIAL NUMBER **124**
CONFIDENTIAL.

CHARLESTON HARBOR, S.C.
FORT MOULTRIE-D2.
SULLIVAN'S ISLAND, S.C.



Scale of Feet.
0 50 100 200

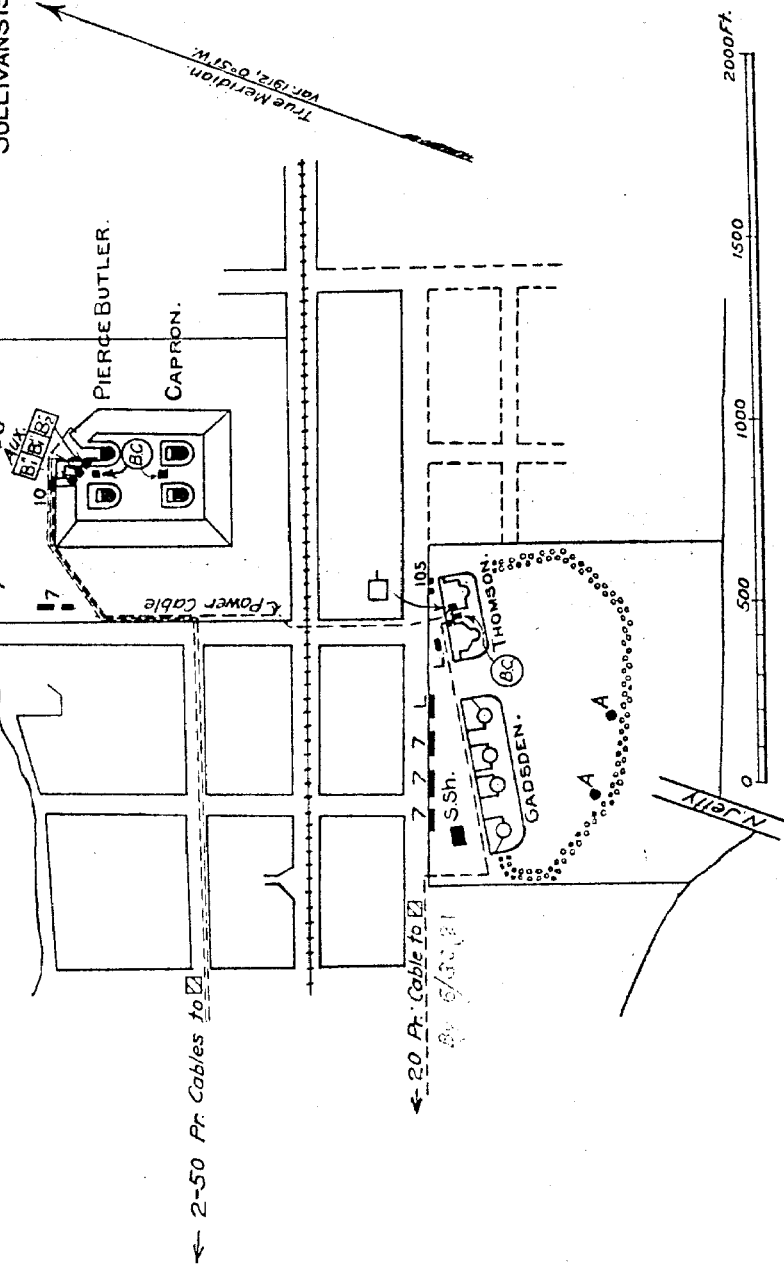
CHARLESTON HARBOR, S.C.
FORT MOULTRIE-D3
 EASTERN PORTION
 SULLIVANS ISLAND.

BATTERIES.
 BUTLER 4-12" M.
 CAPRON 4-12" •
 THOMSON 2-10" Dd
 GADSDEN
 4. Anti Aircraft Guns.

EDITION OF APR 23 1915.
 REVISIONS: DEC. 7, 1915; FEB. 1, 1921.

LEGEND.
 8 GUARD HOUSE.
 41 ENGR. STOREHOUSE.
 105 CISTERNS.
 7 BARRACKS
 10 POWERHOUSE (ABANDONED)

SERIAL NUMBER **124**
CONFIDENTIAL.



LEGEND.

10s. CONTROLLER TOWER.

11s. SEARCHLIGHT PLATFORM.

EDITION OF: MAR 14, 1916.
REVISIONS: FEB 1, 1921.

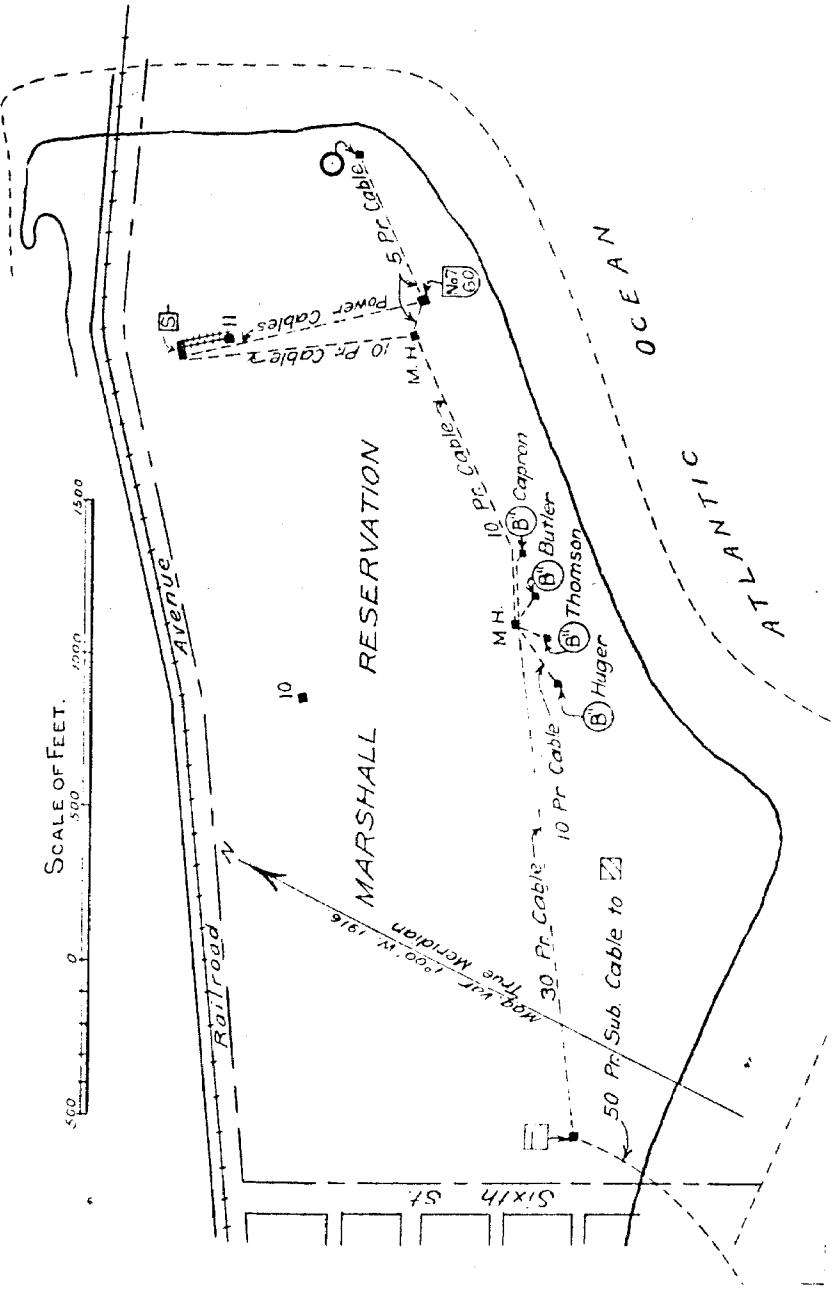
SERIAL NUMBER

124

CHARLESTON HARBOR, S.C.

FORT MOULTRIE D-4.

CONFIDENTIAL.



CHARLESTON HARBOR, S.C.
FORT SUMTER

BATTERIES
 HUGER { 1-12" Dis.
 { 1-12" NDis

SERIAL NUMBER 174
 CONFIDENTIAL

EDITION OF FEB. 1, 1921.

LEGEND.

- 11 SALLY PORT.
- 11 ARTILLERY OFFICE.
- 12 OFFICERS' TEMP QRS.
- 12 MESS KITCHEN AND
- 13 ENLISTED MENS' MESS.
- 13 ENLISTED MENS' BAR.
- 13 PACKS, SHOWERS AND
- 13 LATRINE.
- 14 CISTERN, 20000 GAL.
- 80 LIGHT-KEEPER'S QRS.
- 81 FOG BELL.
- 82 OIL-HOUSE.

