

SERIAL NO.
CONFIDENTIAL
 EDITION OF 1 MAY 1946
 REVISED.

**HARBOR DEFENSES OF THE COLUMBIA
 OREGON-WASHINGTON
 REGIONAL MAP**

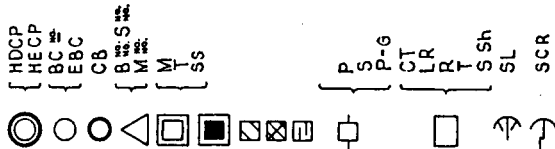
1. Post Administration Bldg., 1A, 249th Admin. Bldg.
18. Q.M. Admin. Bldg., 1C, Court Martial Admin. Bldg.
19. Misc. Admin. Bldg., 1E, Admin. and Supply
- 1F. Military & Civ. Admin., 1G, Storehouse & Admin.
- 1H. Ordn. & Post Engr. Admin., 1J, Art. Engr. Administration.
2. Commanding Officers Quarters.
3. Officers Qtrs. 3A, Officers Mess, 3B, Orderly Room
- 3C. Bacic. Officers Qtrs, Mess.
4. Hospital.
5. Nurses Quarters.
6. Non-Commissioned Officers Quarters.
7. Barracks, 7A, Isolation Barracks.
8. Guard House.
9. Post Exchange, 9A, P.X. Office, 9B, P.X. Beer Parlor.
10. Fire Station.
11. Oil House.
12. Storehouse.
13. Garage.
14. Recreation (Day Room), 14A, Officers Recreation.
15. Latrine, 15A, Isolation Latrine
16. Kitchen - Mess.
17. Theater.
18. Artillery Shop.
19. Repair Shop.
20. Gasoline Station.
21. Gate House (Guard).
22. Wood Shed.
23. Tool House.
24. Civilian Personnel.
25. Bakery.
26. Dispensary.
27. Mess.
28. Office (Btry. B')
29. Motor Dispatch Office
30. Civilian Bachelor Quarters.
31. Cistern.
32. Hose Tower and Shop.
33. Tool and Blacksmith Shop.
34. Machine Shop
35. Drill Hall and Gym.
36. Signal Corps Repairs and Storage
37. Fuel Shed.
38. Non-Com. Officers Club.
39. Water Tank.
40. Post Office.
41. Motor Transp. Repair Shop.
42. Central Heating Plant.
43. Paint Shop.
44. Grease Rack.
45. Motor Pool Shop.
46. Gasoline Storage Tank.
47. Hydrogen Generator.
48. Waiting Room.
49. Dock, 49A, Ferry Slip.

(Disarmed)

50. Battery Mishler
51. Battery Walker
52. Battery Lewis
53. Battery Pratt
54. Battery Smur
55. Battery Clark
56. Battery Russell
57. Battery Ord
58. Battery Ord, Gun #3
59. Battery Crenshaw
70. Chapel
80. Navy Compass Station
100. Boat Storage.
101. Boat House.
102. Cold Storage Room.
103. Garbage and Can Washing.
104. Water Clarifier.
105. Wash Room.
106. Shoe Repair Shop.
107. Typewriter Repair Shop.
108. Gas Instruction.
109. Laundry.
110. Sales Commissary.
111. Scales.
112. Indoor Rifle Range.
113. Camera Tower.

(Disarmed)

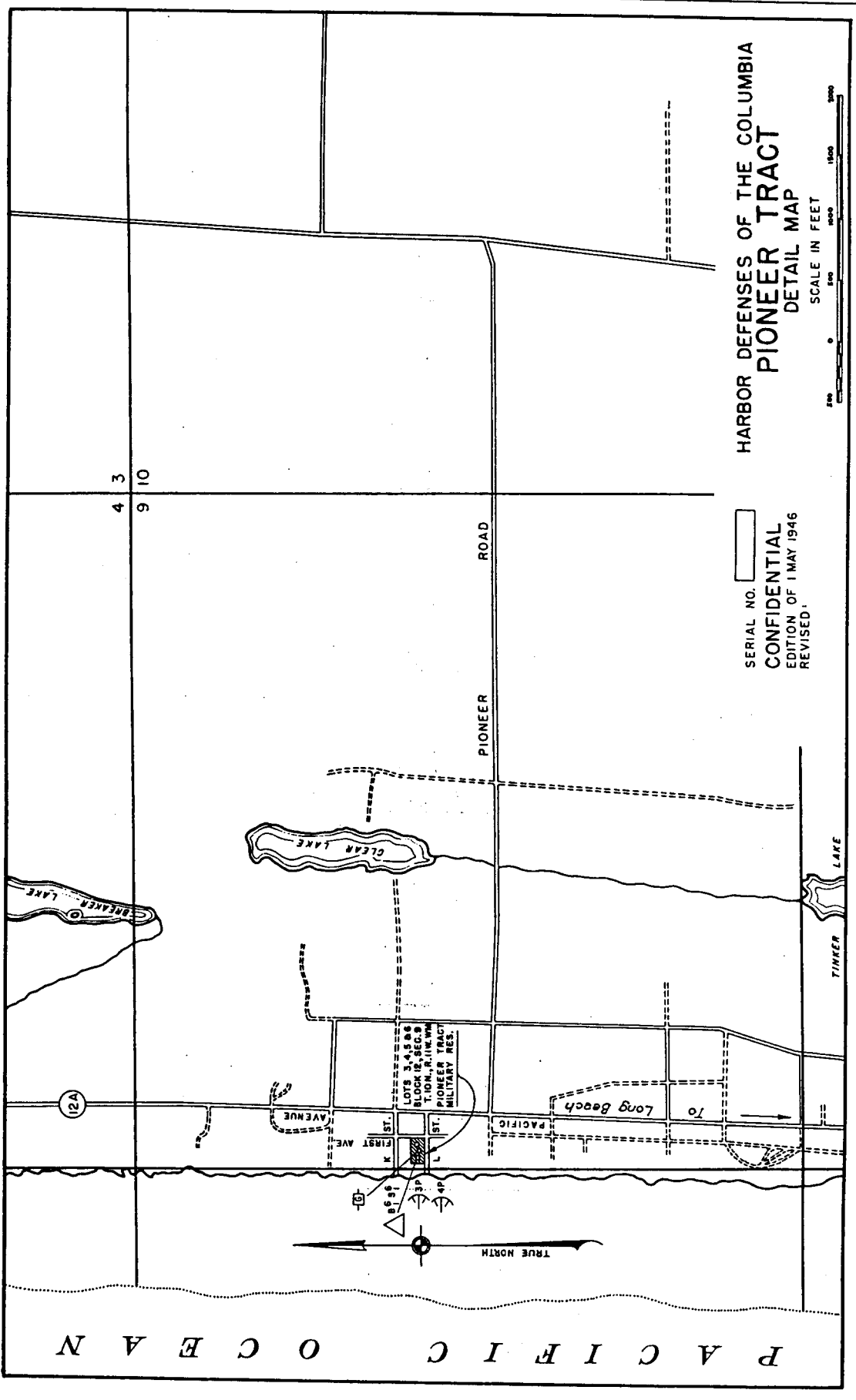
500. Battery Murphy
501. Battery O'Flyng
502. Battery Euenther
503. Battery Allen
504. 90mm A.M.T.B. B'fy.
505. 90mm A.M.T.B. B'fy.



Harbor defense command post.
 Harbor command post.
 Battery command post.
 Emergency battery command post.
 Searchlight controller booth.
 Battery observation post, Spotting post.
 Mine observation post.
 Meteorological station.
 Tide station.
 Signal station.
 Mine casemate.
 Fire-control switchboard room.
 Combined F-C and post switchboard room.
 Cable terminal.
 Power house.
 Pumping plant.
 Searchlight power house.
 Pump-Generator house.
 Cable tank.
 Mine loading room.
 Radio.
 Transmitter
 Searchlight shelter.
 Searchlight, F, fixed, P, portable, M, mobile.
 Surface craft detection station.

HARBOR DEFENSES OF THE COLUMBIA
 OREGON-WASHINGTON
 LEGEND

SERIAL NO. []
 CONFIDENTIAL
 EDITION OF 1 MAY 1946
 REVISED

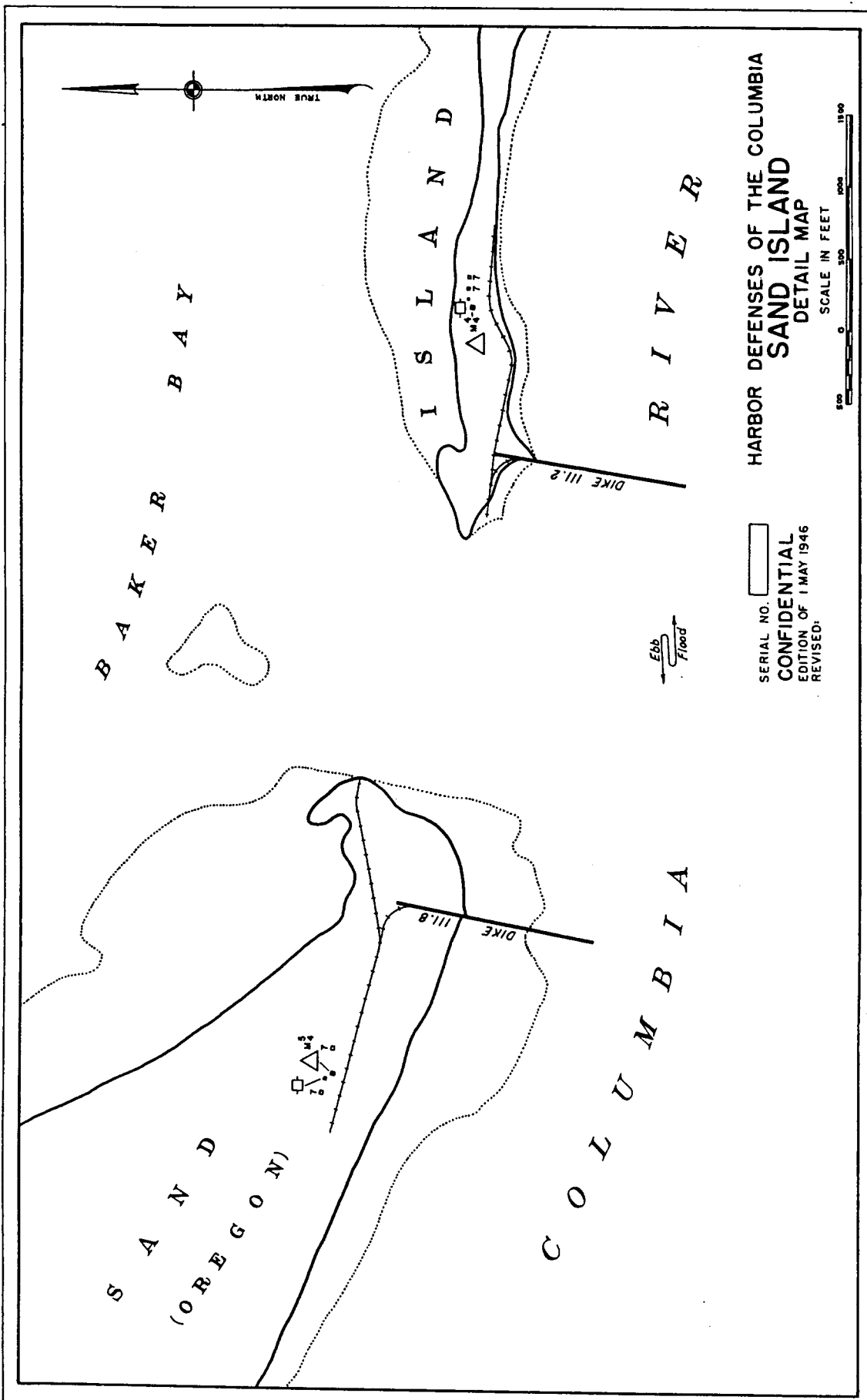


HARBOR DEFENSES OF THE COLUMBIA
PIONEER TRACT
 DETAIL MAP

SERIAL NO. []
CONFIDENTIAL
 EDITION OF 1 MAY 1946
 REVISED



P A C I F I C O C E A N



HARBOR DEFENSES OF THE COLUMBIA
SAND ISLAND
 DETAIL MAP

SERIAL NO.
CONFIDENTIAL
 EDITION OF 1 MAY 1946
 REVISED.

SCALE IN FEET
 0 500 1000 1500

Ebb
 Flood

BAKER BAY

SAND ISLAND

COLUMBIA RIVER

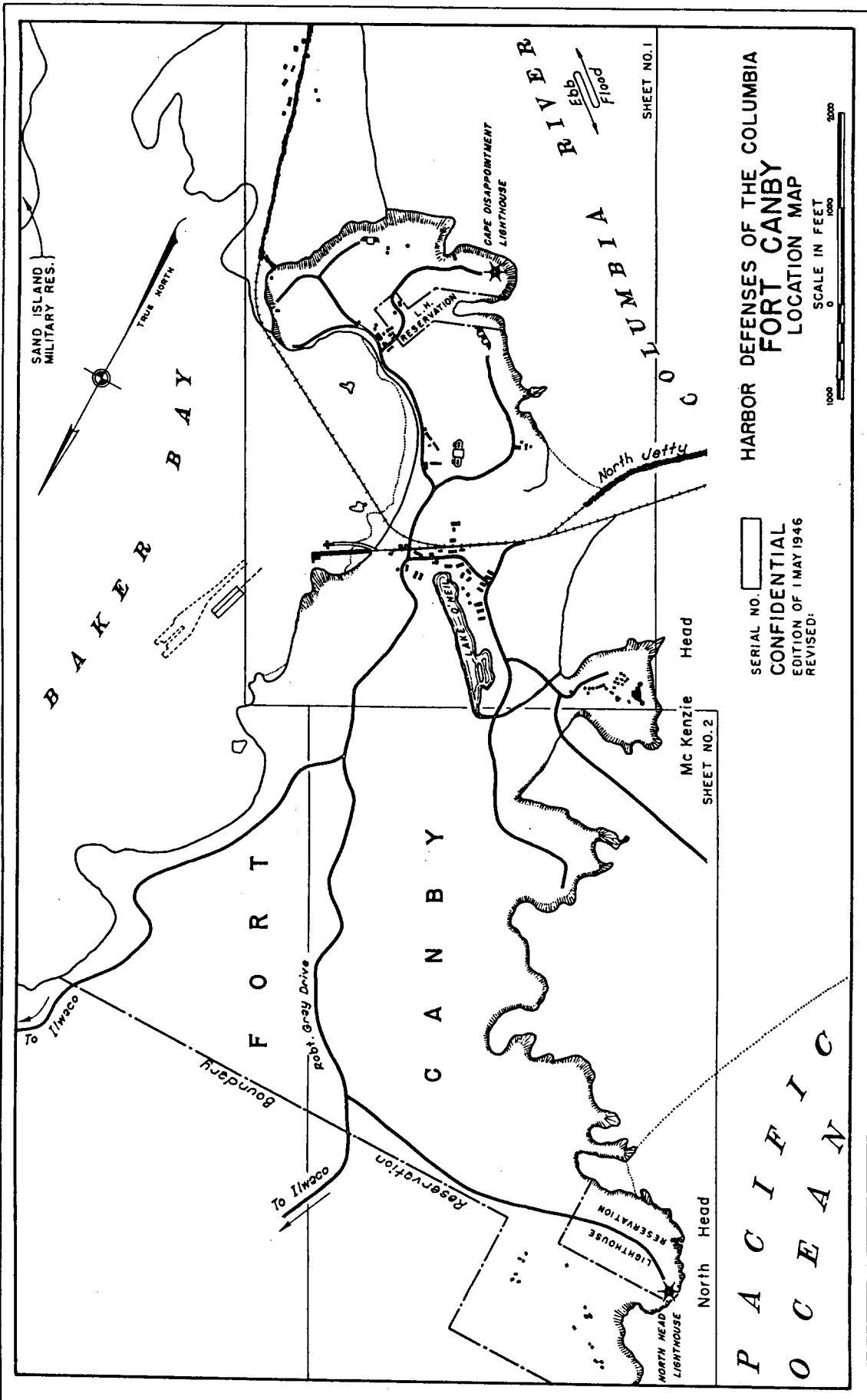
SAND (OREGON)

COLUMBIA

TRUE NORTH

DIKE III.2

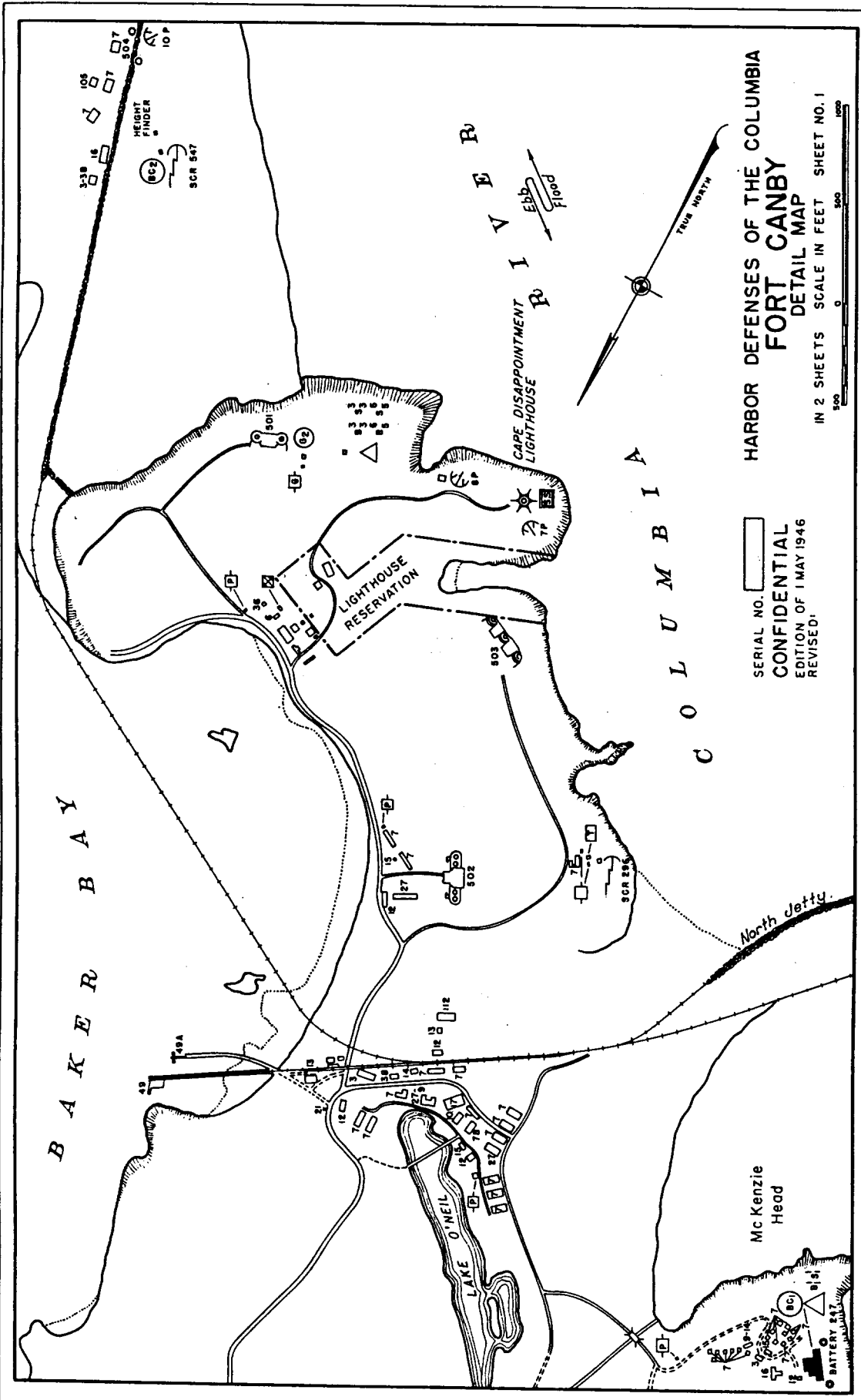
DIKE III.8



HARBOR DEFENSES OF THE COLUMBIA
FORT CANBY
 LOCATION MAP

SERIAL NO.
CONFIDENTIAL
 EDITION OF 1 MAY 1946
 REVISED:

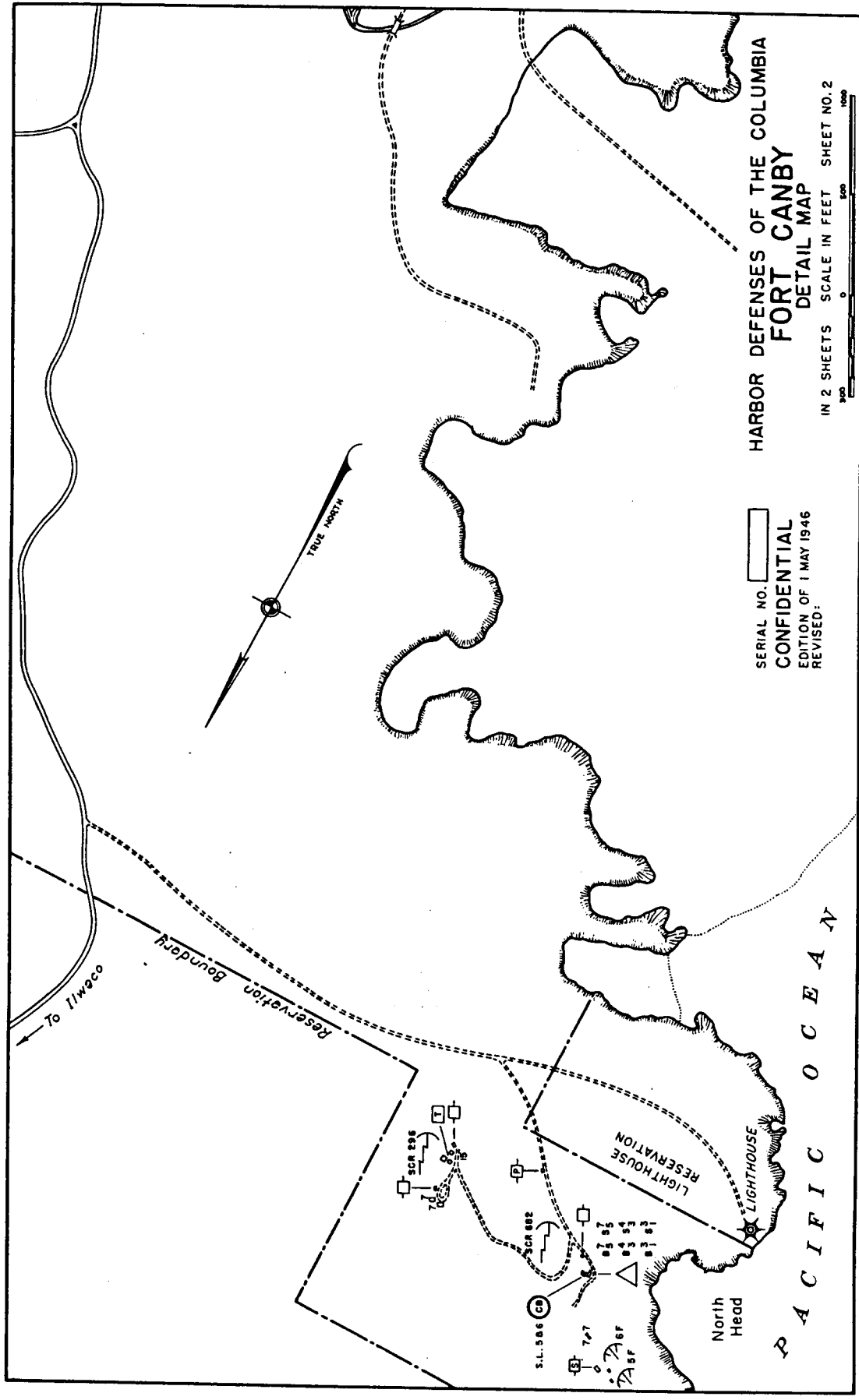
P A C I F I C
 O C E A N



HARBOR DEFENSES OF THE COLUMBIA
FORT CANBY
 DETAIL MAP

IN 2 SHEETS SCALE IN FEET SHEET NO. 1

SERIAL NO. []
CONFIDENTIAL
 EDITION OF 1 MAY 1946
 REVISED:



HARBOR DEFENSES OF THE COLUMBIA
FORT CANBY
 DETAIL MAP

SERIAL NO. []
CONFIDENTIAL
 EDITION OF 1 MAY 1946
 REVISED:

IN 2 SHEETS SCALE IN FEET SHEET NO. 2
 1000 500 0 500 1000

P A C I F I C O C E A N

Reservation Boundary

To Tweco

TRUE NORTH

LIGHTHOUSE RESERVATION

LIGHTHOUSE

North Head

S.L. 586 CB

727

87

88

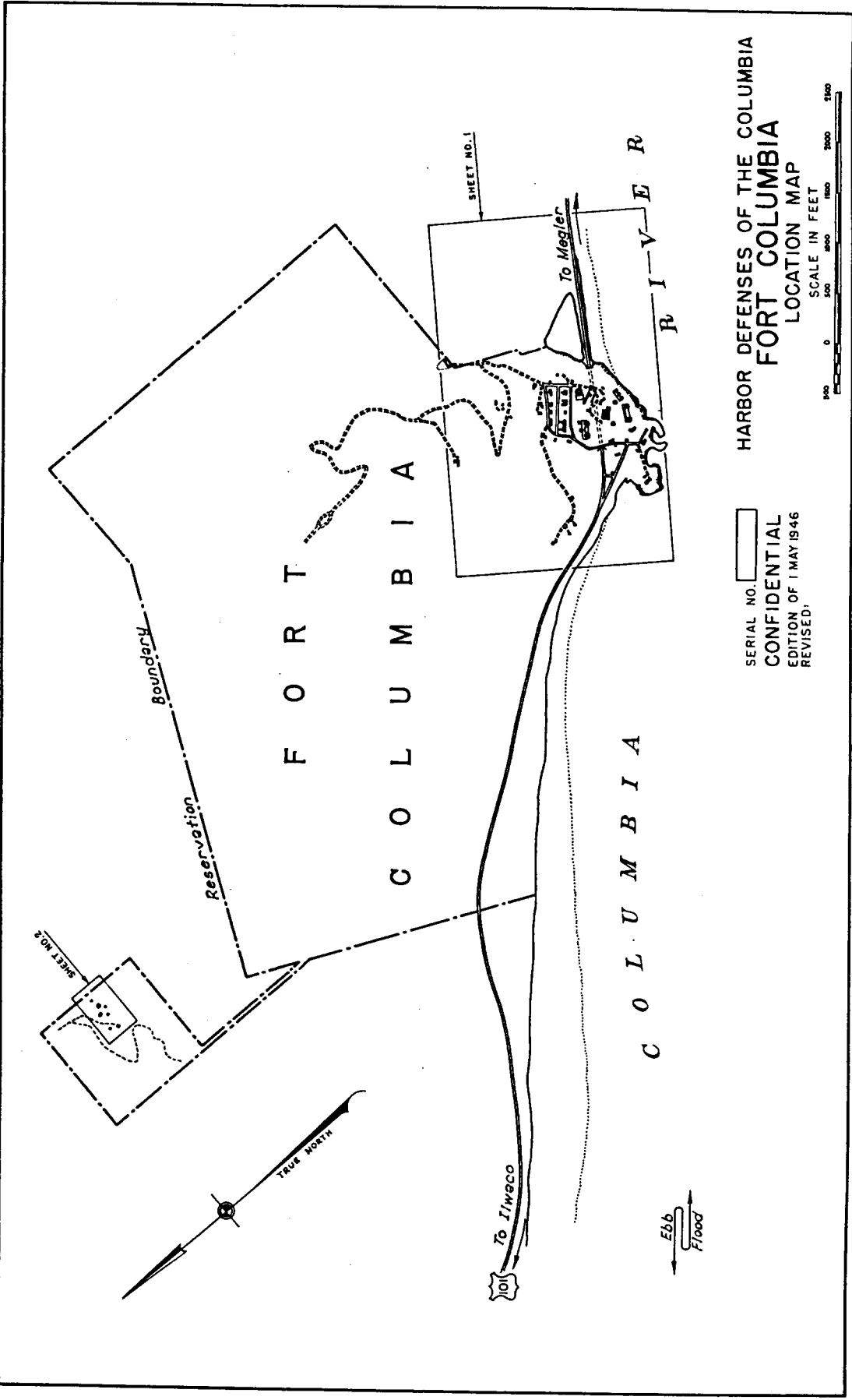
89

90

91

SCR 896

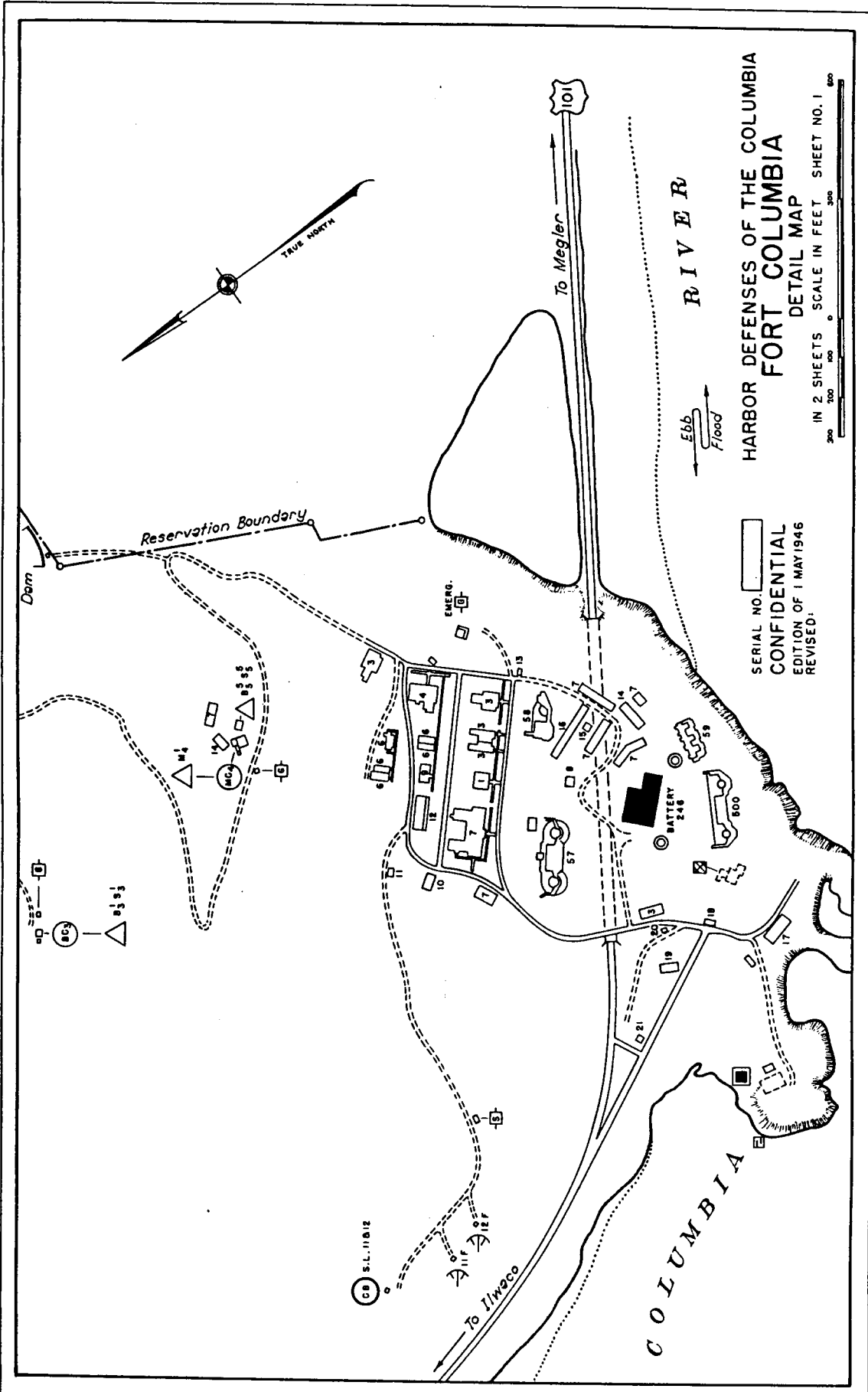
SCR 892



HARBOR DEFENSES OF THE COLUMBIA
FORT COLUMBIA
 LOCATION MAP

SERIAL NO. []
CONFIDENTIAL
 EDITION OF 1 MAY 1946
 REVISED:



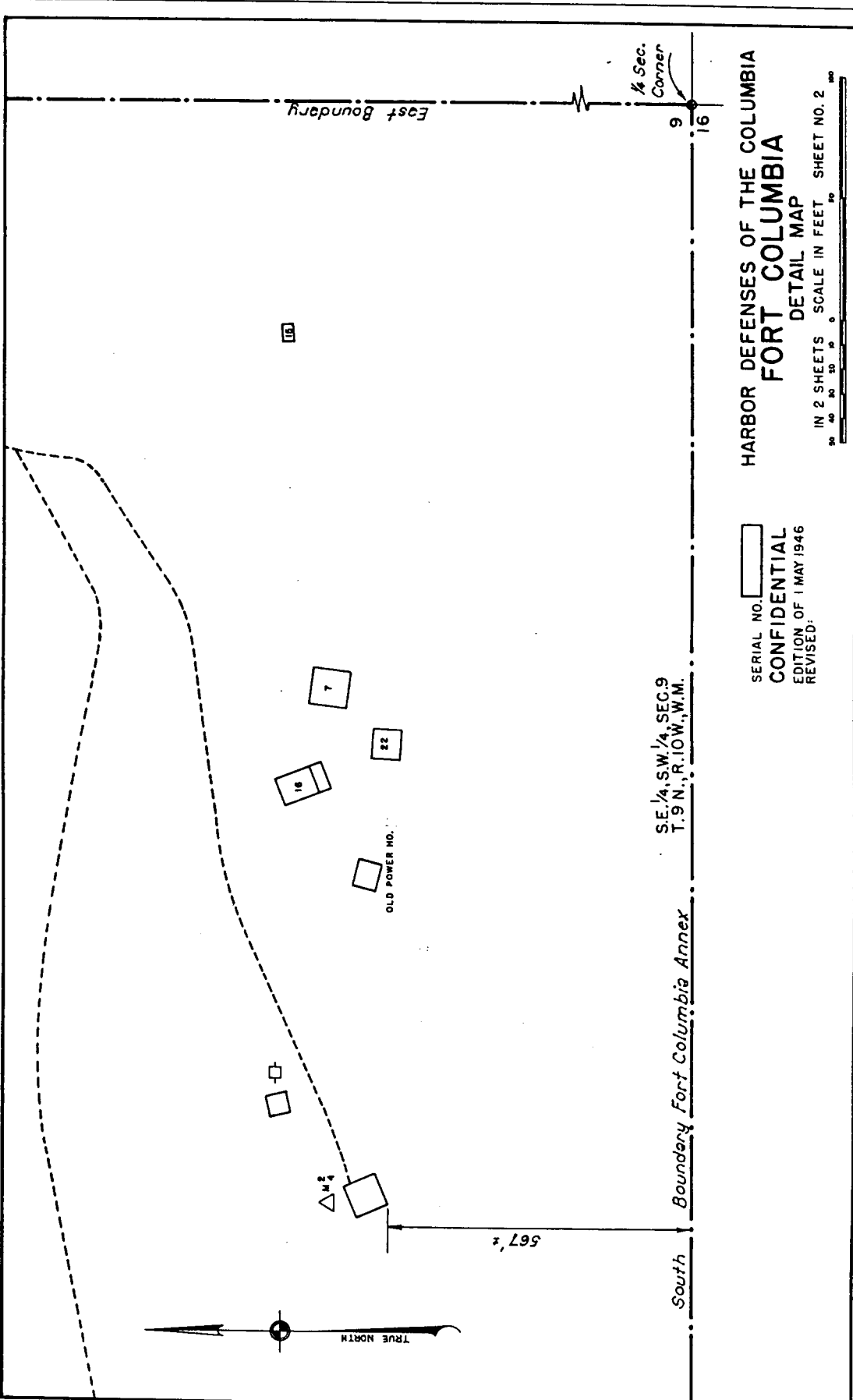


HARBOR DEFENSES OF THE COLUMBIA
FORT COLUMBIA
 DETAIL MAP

SERIAL NO. []
 CONFIDENTIAL
 EDITION OF 1 MAY 1946
 REVISED.

IN 2 SHEETS SCALE IN FEET SHEET NO. 1





SE 1/4, SW 1/4 SEC. 9
T. 9 N., R. 10 W., W.M.

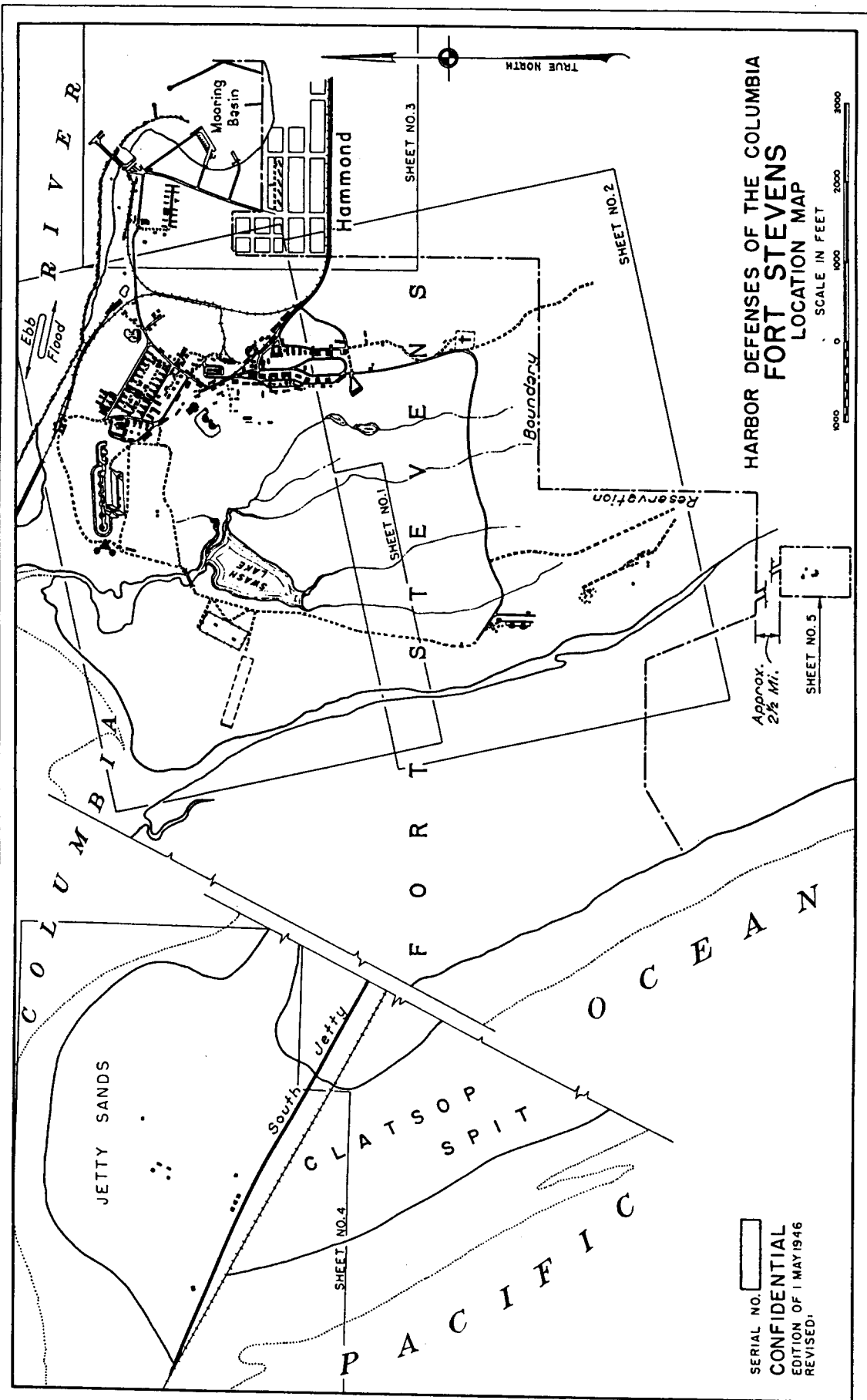
Boundary Fort Columbia Annex

HARBOR DEFENSES OF THE COLUMBIA
FORT COLUMBIA
DETAIL MAP

SERIAL NO. []
CONFIDENTIAL
EDITION OF 1 MAY 1946
REVISED:

IN 2 SHEETS SCALE IN FEET SHEET NO. 2

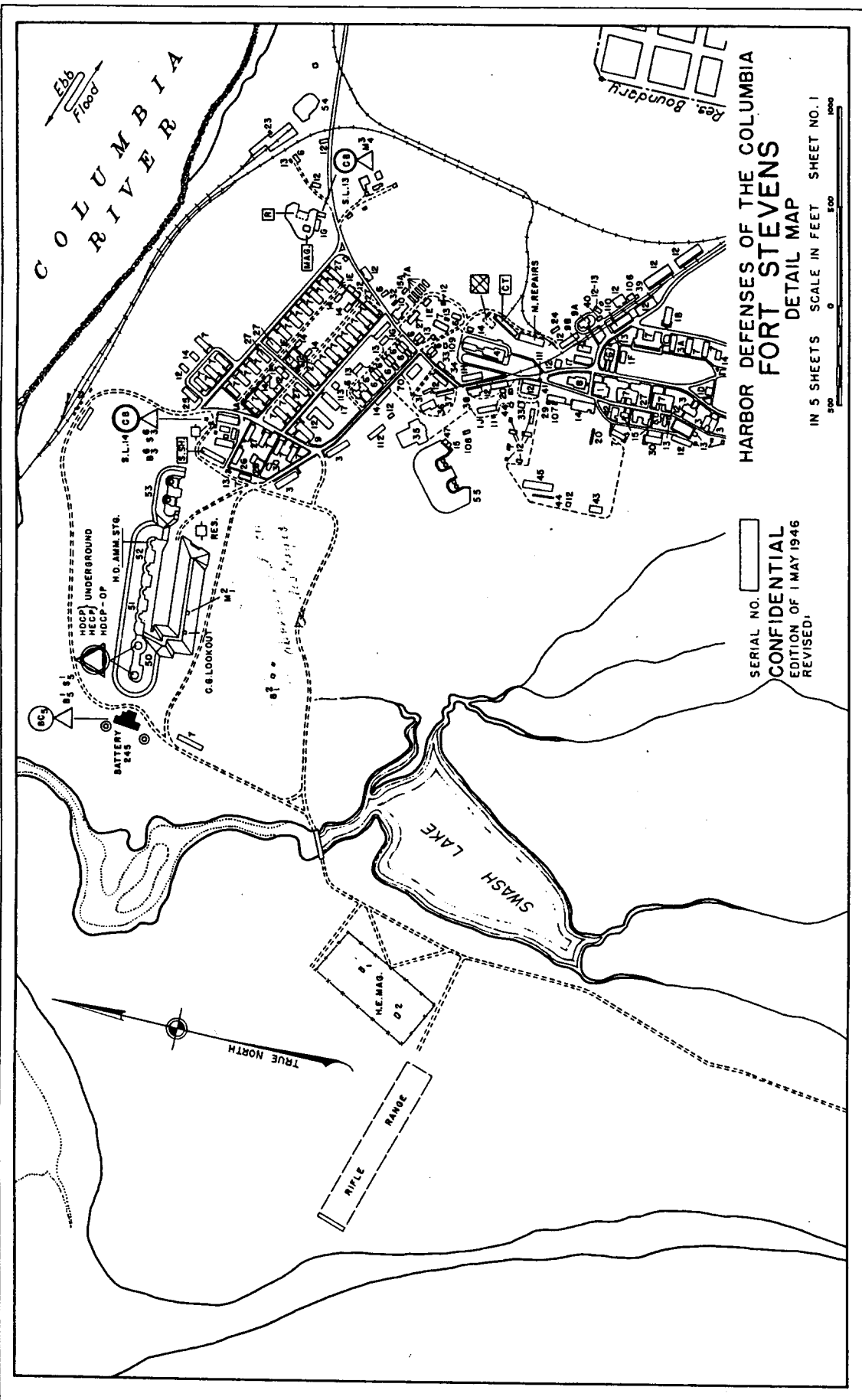




HARBOR DEFENSES OF THE COLUMBIA
FORT STEVENS
 LOCATION MAP

SCALE IN FEET
 0 1000 2000

SERIAL NO. 1
 CONFIDENTIAL
 EDITION OF 1 MAY 1946
 REVISED.



COLUMBIA RIVER

Ebb Flood

Res. Boundary

HARBOR DEFENSES OF THE COLUMBIA
FORT STEVENS
DETAIL MAP

IN 5 SHEETS SCALE IN FEET SHEET NO. 1

SERIAL NO. []
CONFIDENTIAL
EDITION OF 1 MAY 1946
REVISED

TRUE NORTH

SMASH LAKE

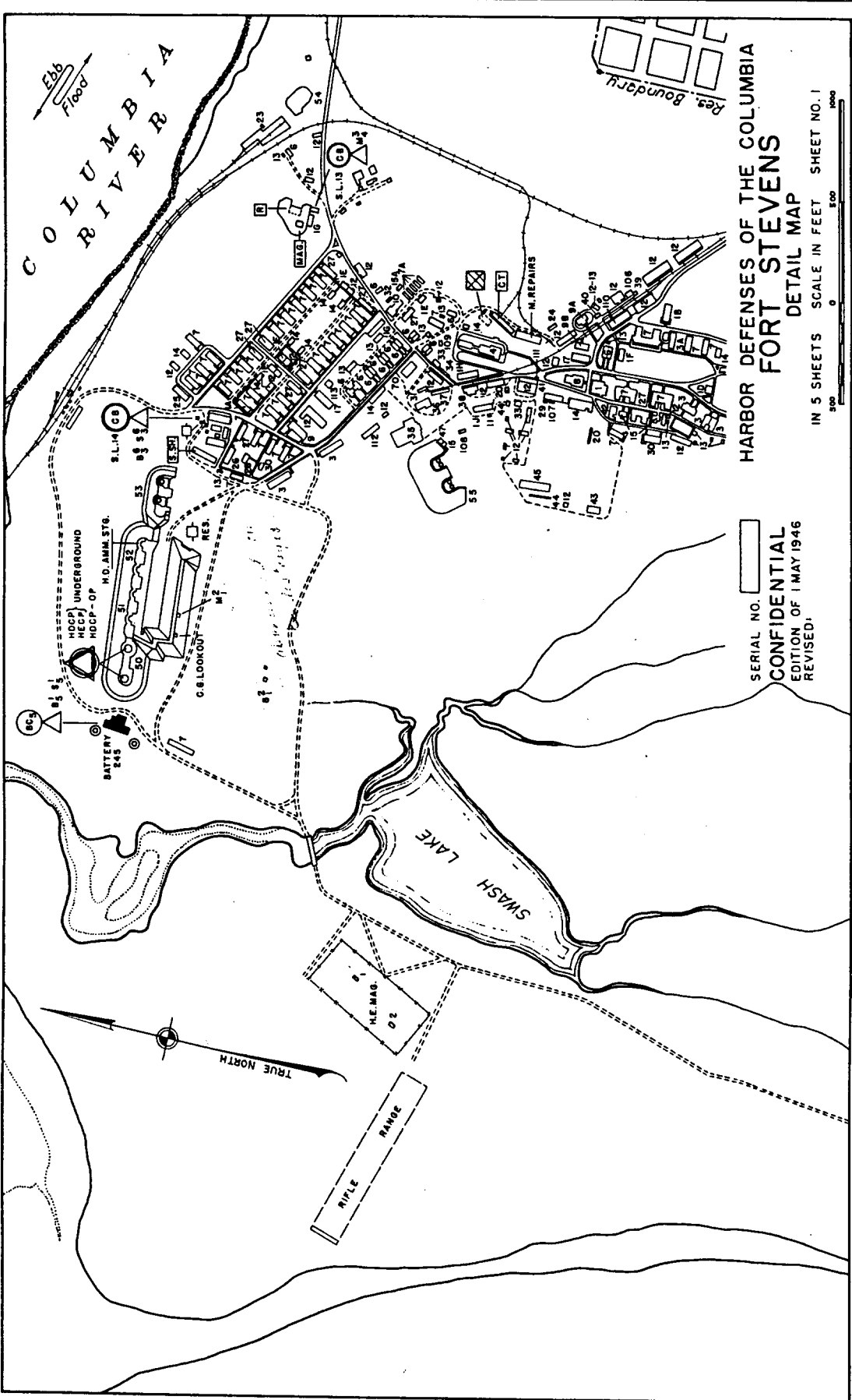
HEMAS 02

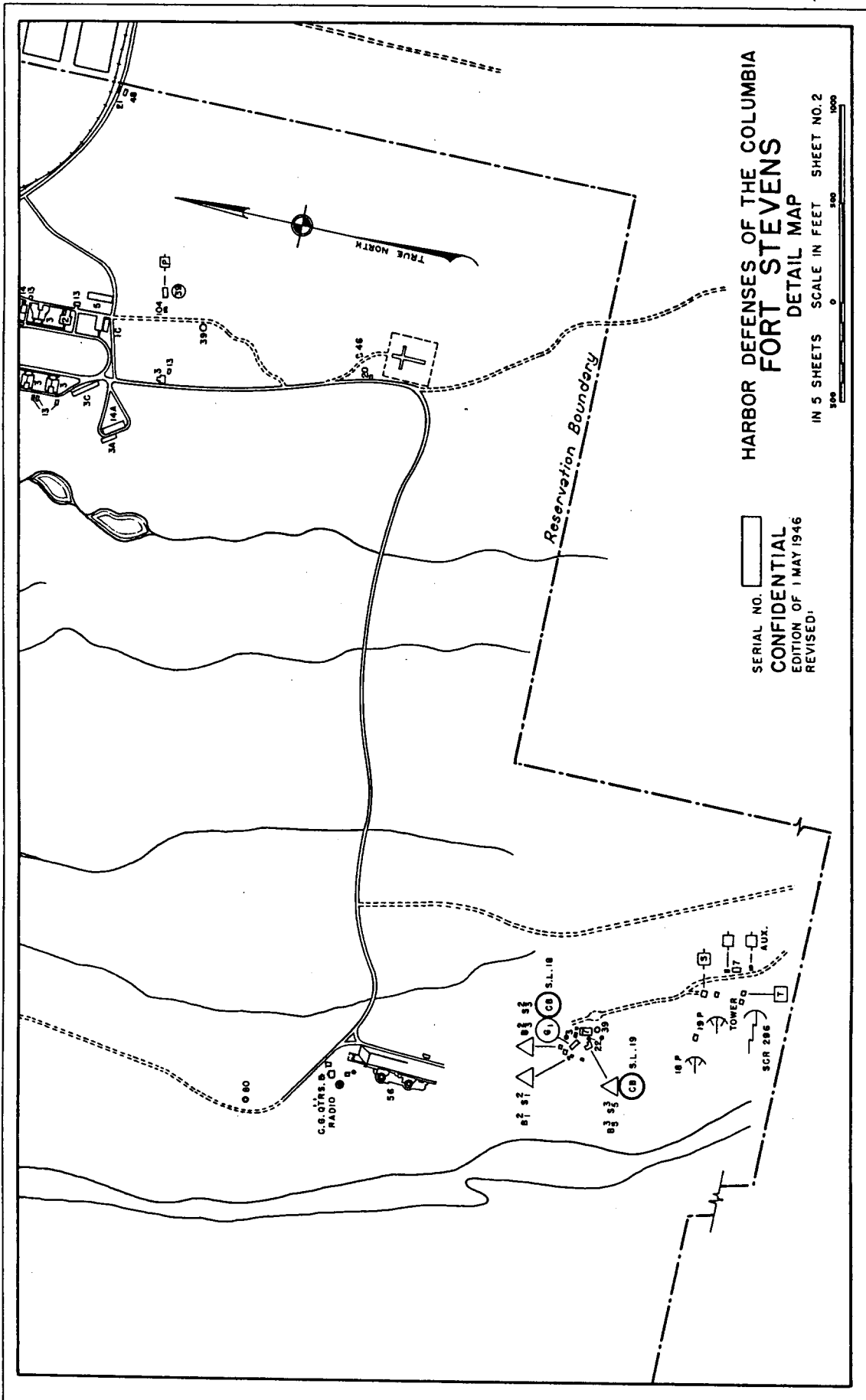
RIFLE RANGE

HDCP UNDERGROUND
HDCP-OP
H.C. AMM. STR.
RES.
M2
GO LOOKOUT

BATTERY 245

M. REPAIRS





HARBOR DEFENSES OF THE COLUMBIA
FORT STEVENS
 DETAIL MAP

SERIAL NO. []
CONFIDENTIAL
 EDITION OF 1 MAY 1946
 REVISED:

IN 5 SHEETS SCALE IN FEET SHEET NO. 2

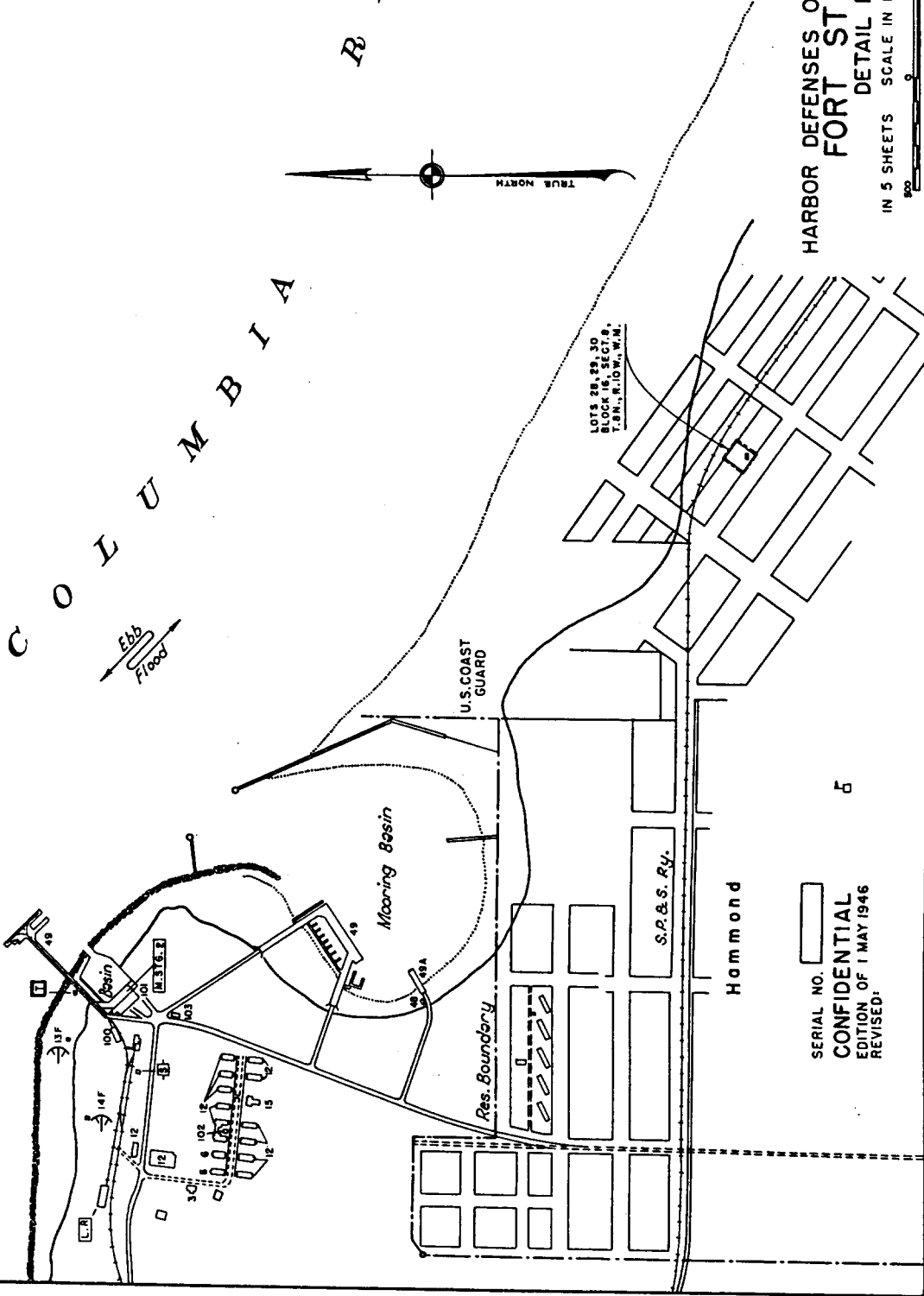
C O L U M B I A

R I V E R



HARBOR DEFENSES OF THE COLUMBIA
FORT STEVENS
DETAIL MAP

IN 5 SHEETS SCALE IN FEET SHEET NO. 3



LOTS 28, 29, 30
BLOCK 16, SECT. 8
T. 8 N., R. 10 W., W.M.

U.S. COAST
GUARD

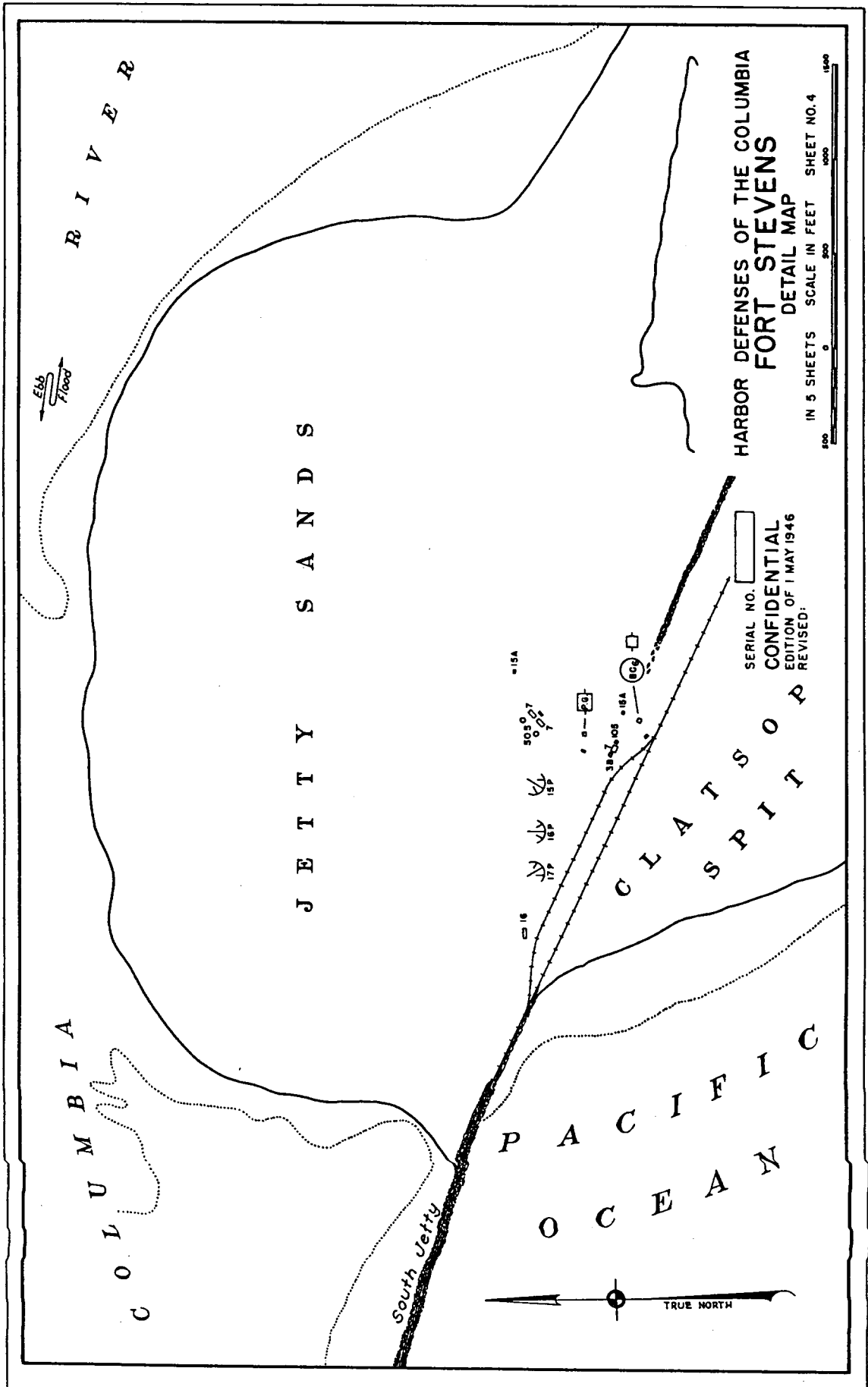
Mooring Basin

S. P. & S. Ry.

Hammond

SERIAL NO.
CONFIDENTIAL
EDITION OF 1 MAY 1946
REVISED.

5



HARBOR DEFENSES OF THE COLUMBIA RIVER
FORT STEVENS
DETAIL MAP

IN 5 SHEETS SCALE IN FEET SHEET NO. 4
500 0 500 1000 1500

SERIAL NO. []
CONFIDENTIAL
EDITION OF 1 MAY 1946
REVISED:

C O L U M B I A

R I V E R

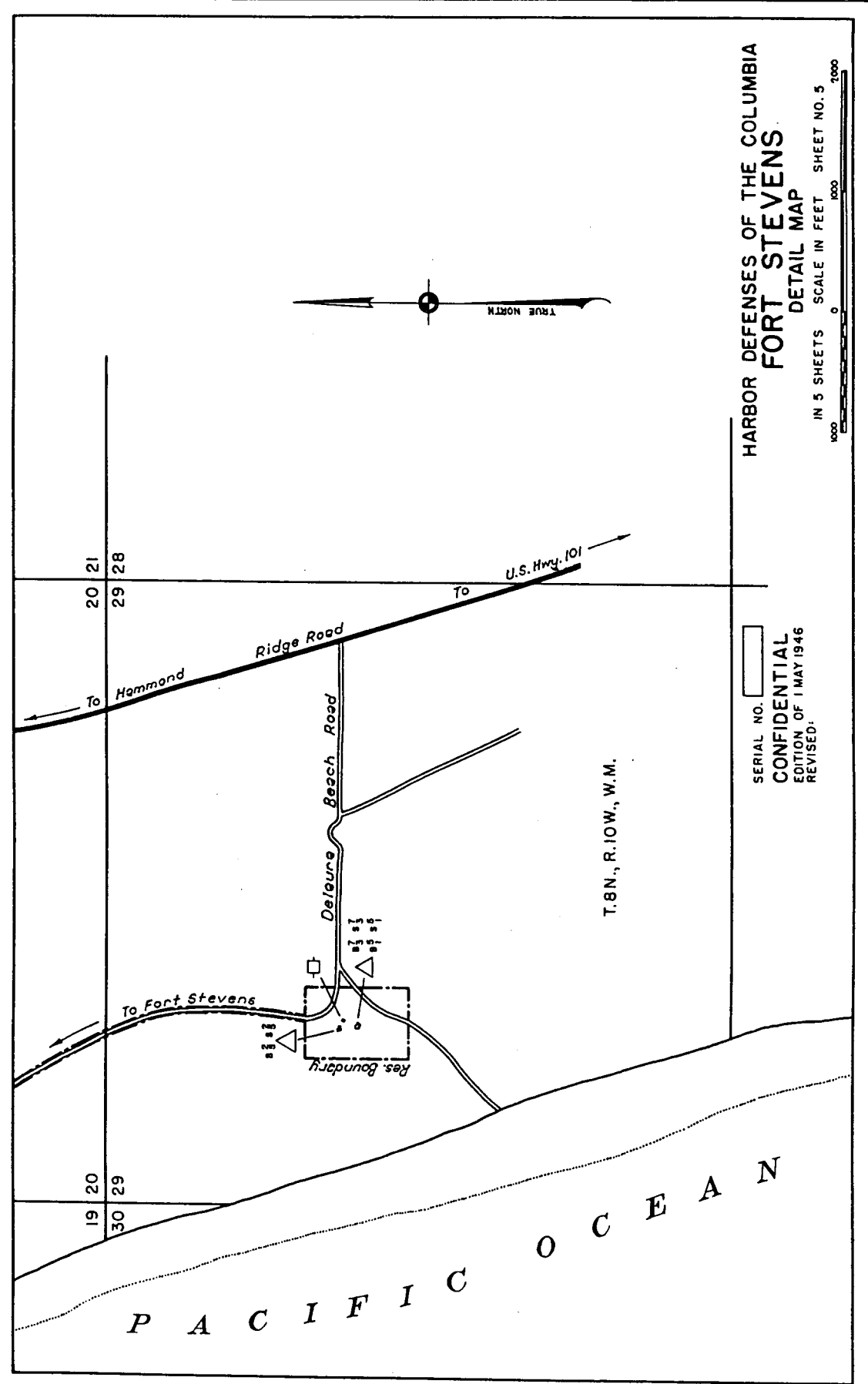
J E T T Y S A N D S

C L A T S O P
S P I T

P A C I F I C
O C E A N

South Jetty

TRUE NORTH

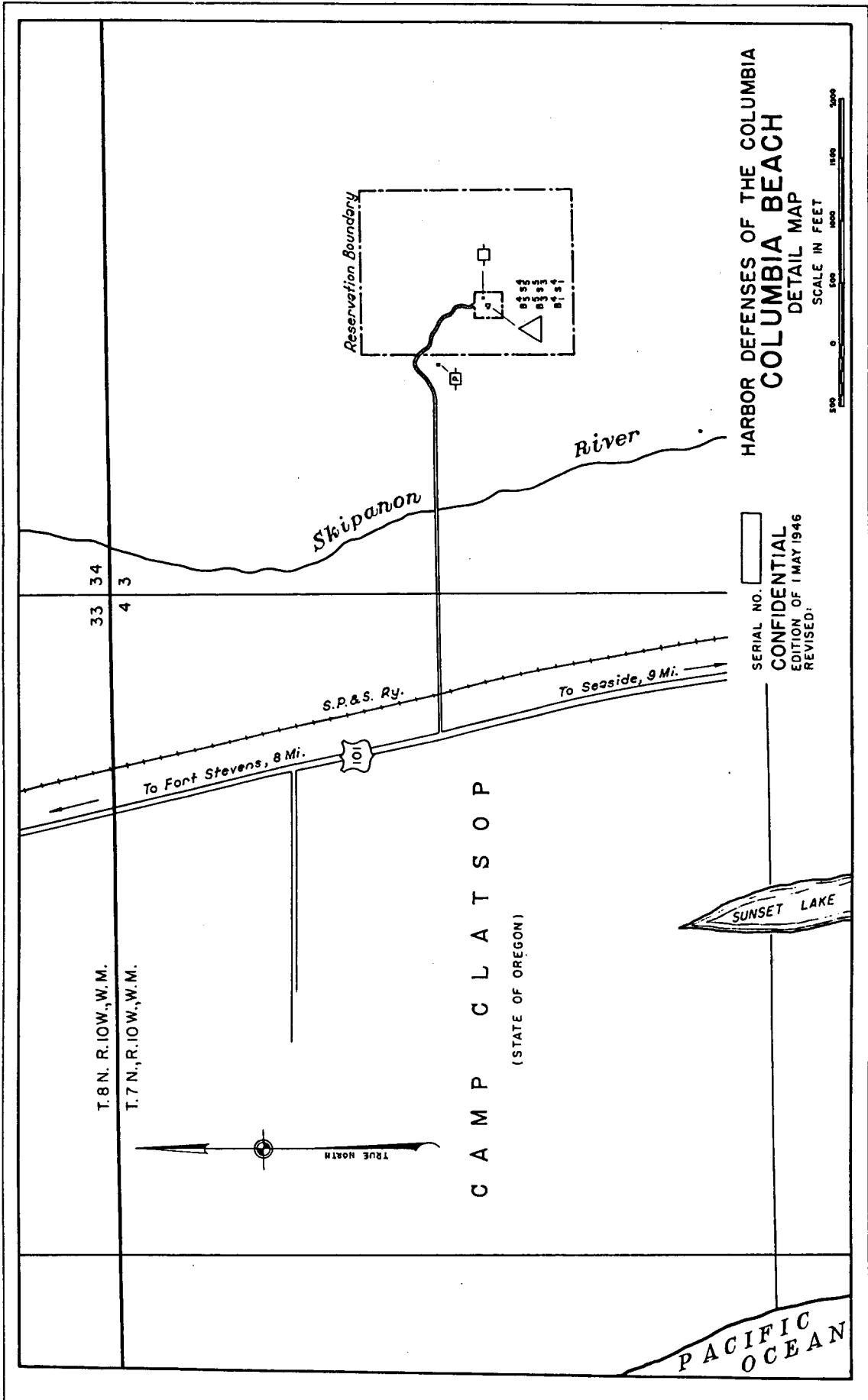


HARBOR DEFENSES OF THE COLUMBIA
FORT STEVENS
 DETAIL MAP

IN 5 SHEETS SCALE IN FEET SHEET NO. 5

SERIAL NO.
CONFIDENTIAL
 EDITION OF 1 MAY 1946
 REVISED:

T. 8N., R. 10W., W.M.



T. 8 N., R. 10 W., W. M.
 T. 7 N., R. 10 W., W. M.



CAMP CLATSOP
 (STATE OF OREGON)

PACIFIC OCEAN

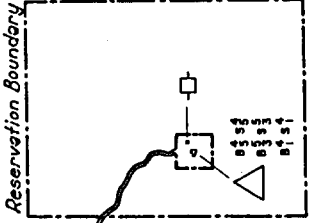


To Fort Stevens, 8 Mi.

S.P.&S. Ry.

To Seaside, 9 Mi.

Skipanon River



HARBOR DEFENSES OF THE COLUMBIA
 COLUMBIA BEACH
 DETAIL MAP



SERIAL NO.
 CONFIDENTIAL
 EDITION OF 1 MAY 1946
 REVISED: