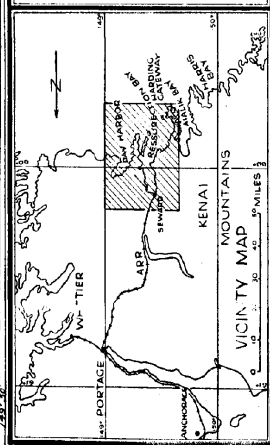
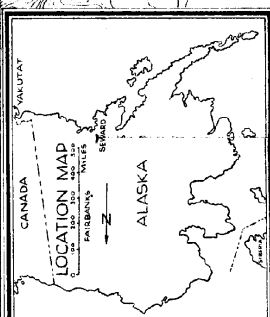


SECRET

HARBOR DEFENSES OF SEWARD AND FORT RAYMOND
Office of the Artillery Engineer

GENERAL LOCATION MAP

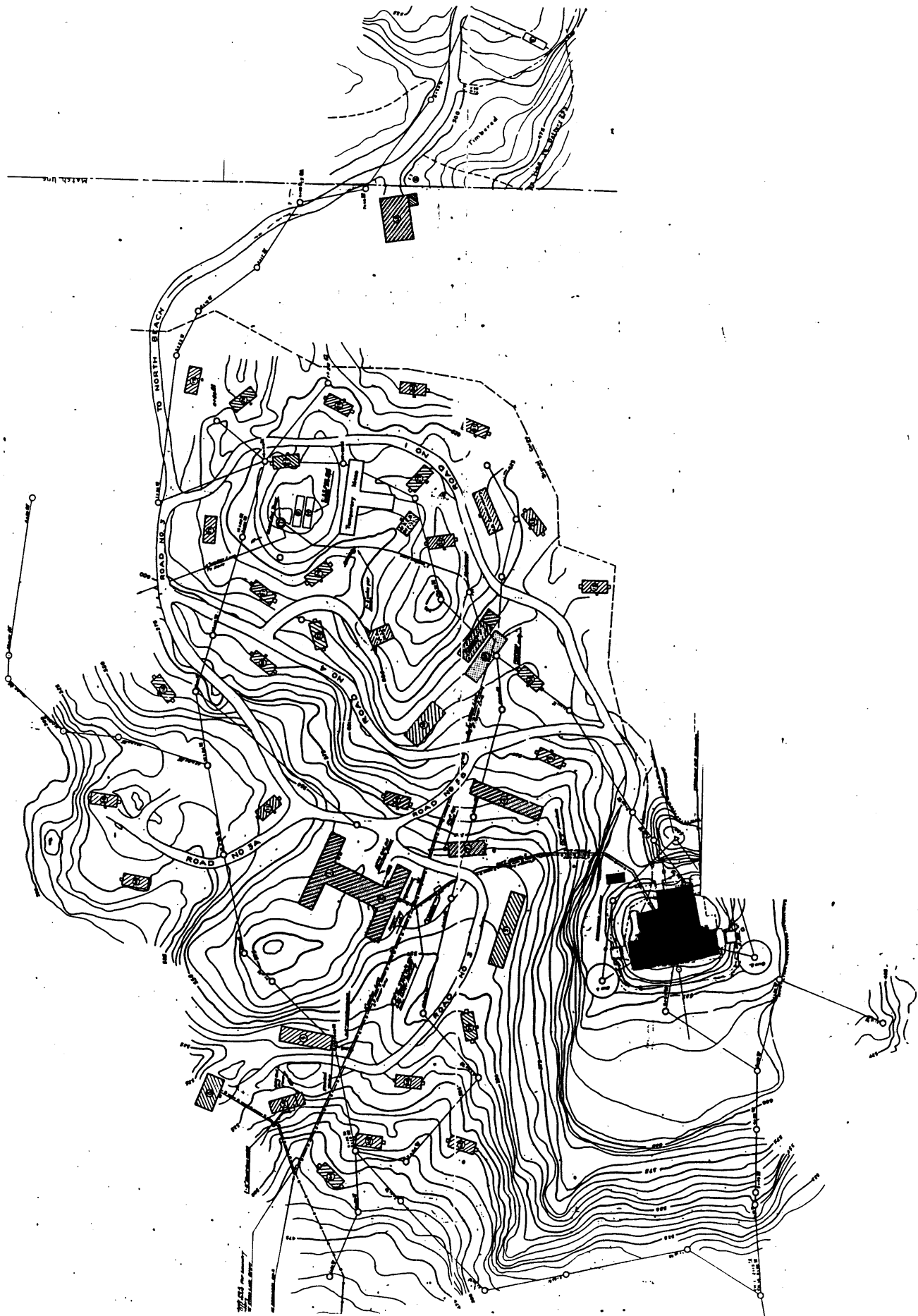
Contour Interval 200 Ft. Drawn By DS
Date 19 August 1944 Checked By SSZ
EXHIBIT NO. 1A

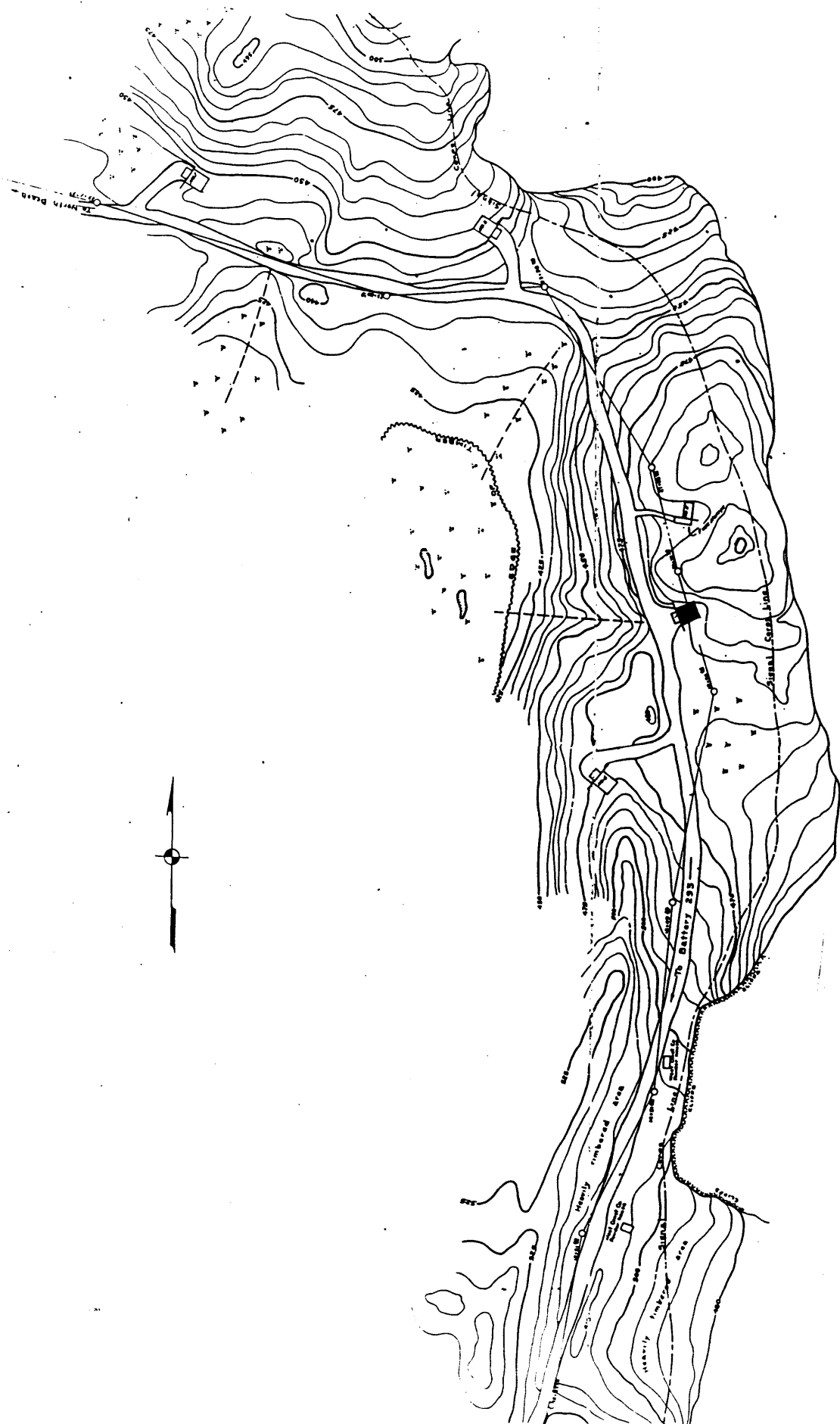


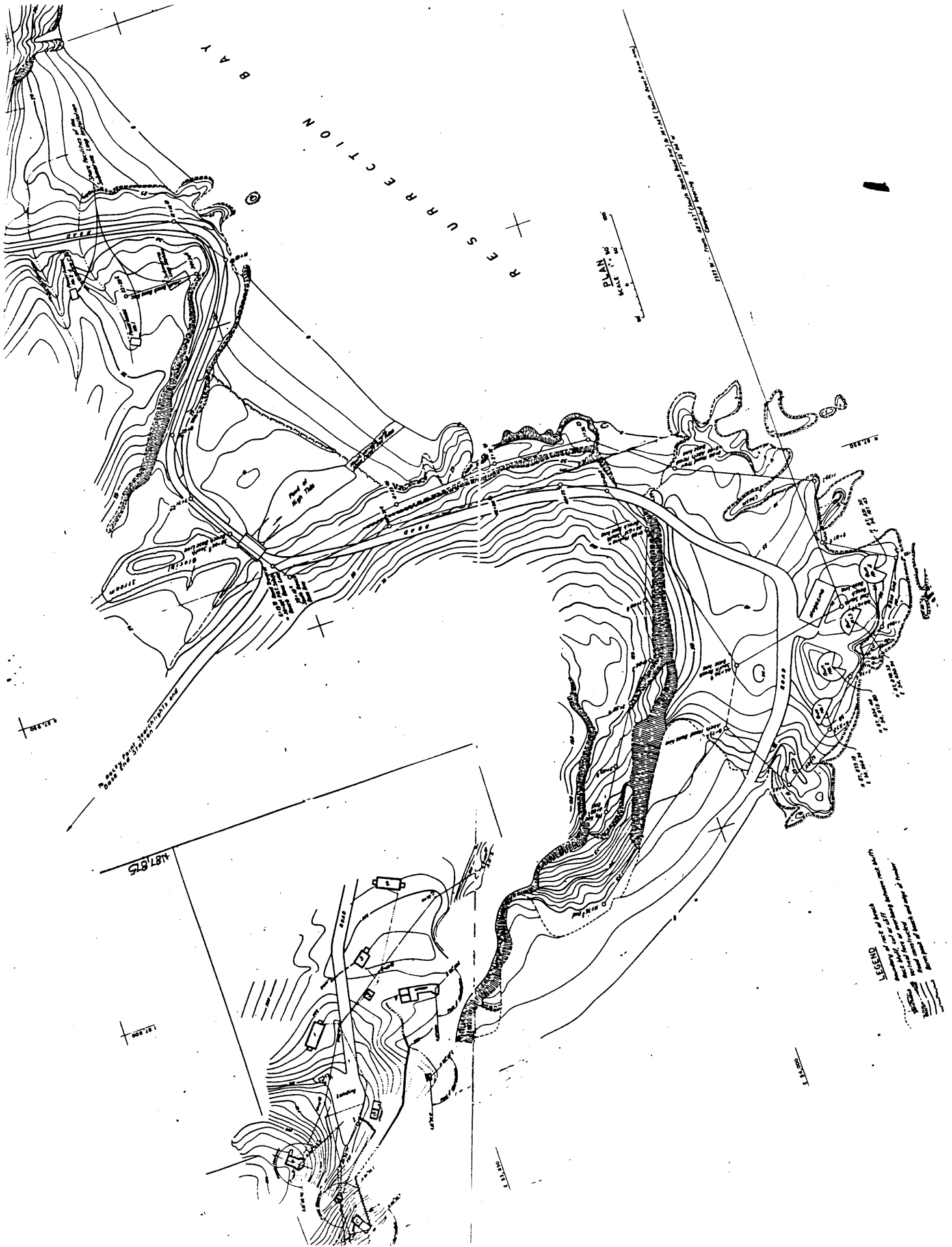
140,000 150,000 160,000 170,000 180,000

70,000 80,000 90,000 100,000 110,000

50,000









ITEM	STRUCTURE	ELEVATION	COORDINATES
A	Gun No. 1	48.00	151° 10' 00" W, 64° 43' 45" N
B	Gun No. 2	51.00	155° 10' 00" W, 64° 43' 45" N
C	Gun No. 3	57.00	155° 10' 00" W, 64° 43' 45" N
D	Gun No. 4	57.00	155° 10' 00" W, 64° 43' 45" N
E	Magazine	47.00	155° 10' 00" W, 64° 43' 45" N

LEGEND	
.....	Contours
.....	Contours
.....	Contours
.....	Contours
.....	Contours

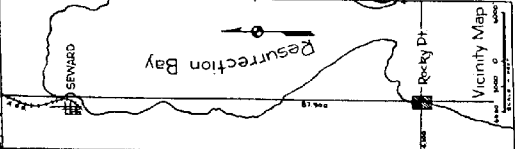
SECRET

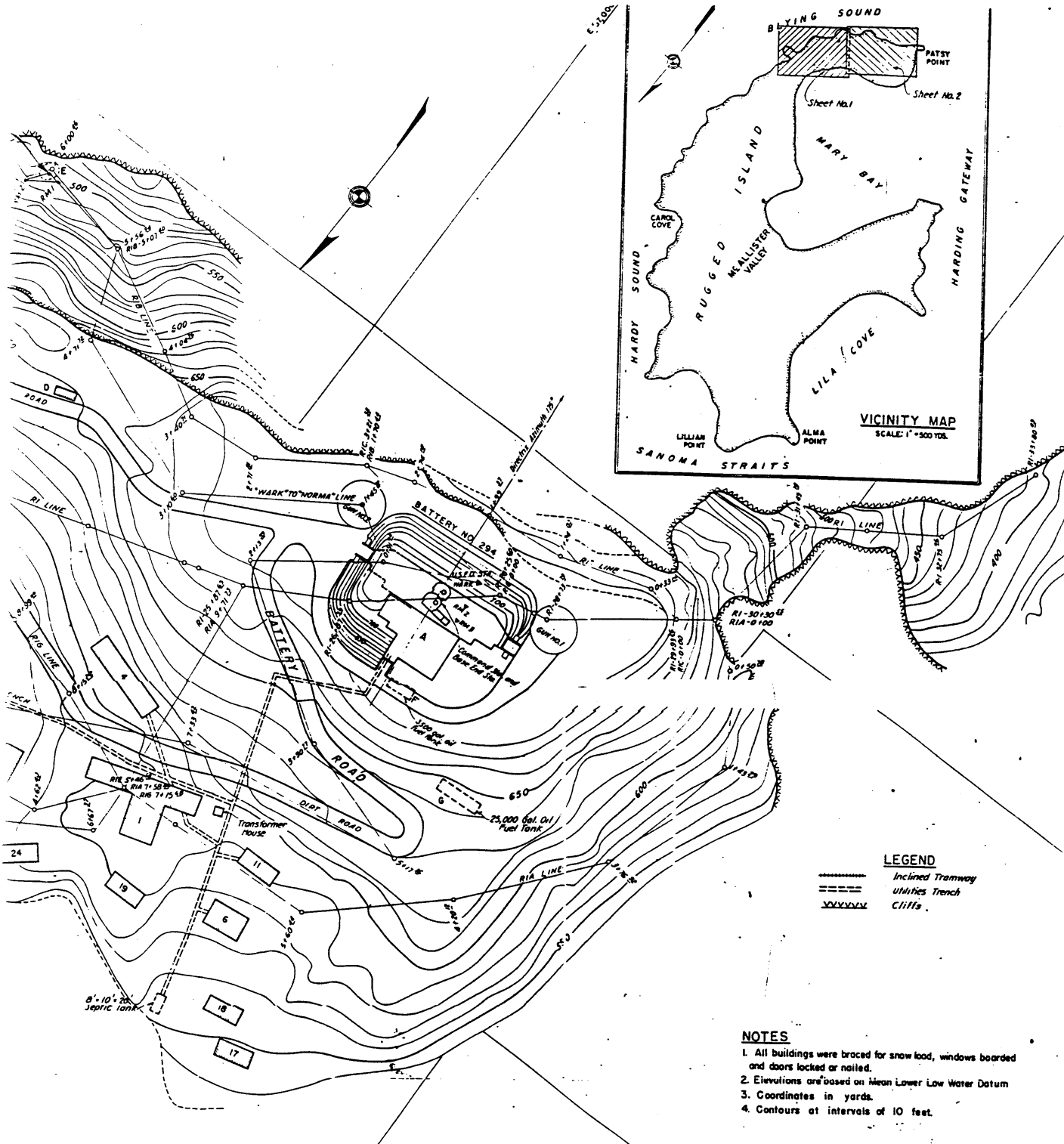
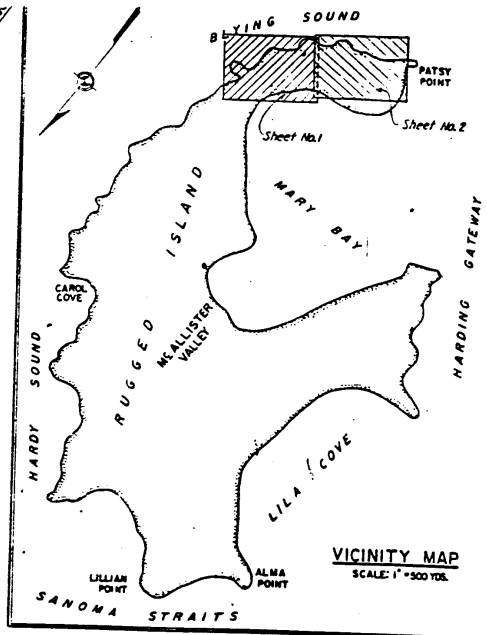
HARBOR DEFENSES OF SEWARD AND FORT RAYMOND
 Office of the Artillery Engineer
PLOT PLAN
ROCKY POINT 155mm BATTERY

Contour Interval 5 Ft. Drawn By *[Signature]*
 Date August 18, 1944 Checked By *[Signature]*

REVISIONS
 Date

Scale 1:50,000
 1 inch = 4,167 feet





LEGEND
 - - - - - Inclined Tramway
 = = = = = Utilities Trench
 XXXXXX Cliffs

- NOTES**
1. All buildings were braced for snow load, windows boarded and doors locked or nailed.
 2. Elevations are based on Mean Lower Low Water Datum.
 3. Coordinates in yards.
 4. Contours at intervals of 10 feet.

PLAN
 SCALE: 1" = 50'
 0 50' 100'

Regraded - UNCLASSIFIED
 AUTHORITY: 31, ERICAT CCCC dated 2 Sep 48
 By _____ Date _____

FORT BULKLEY

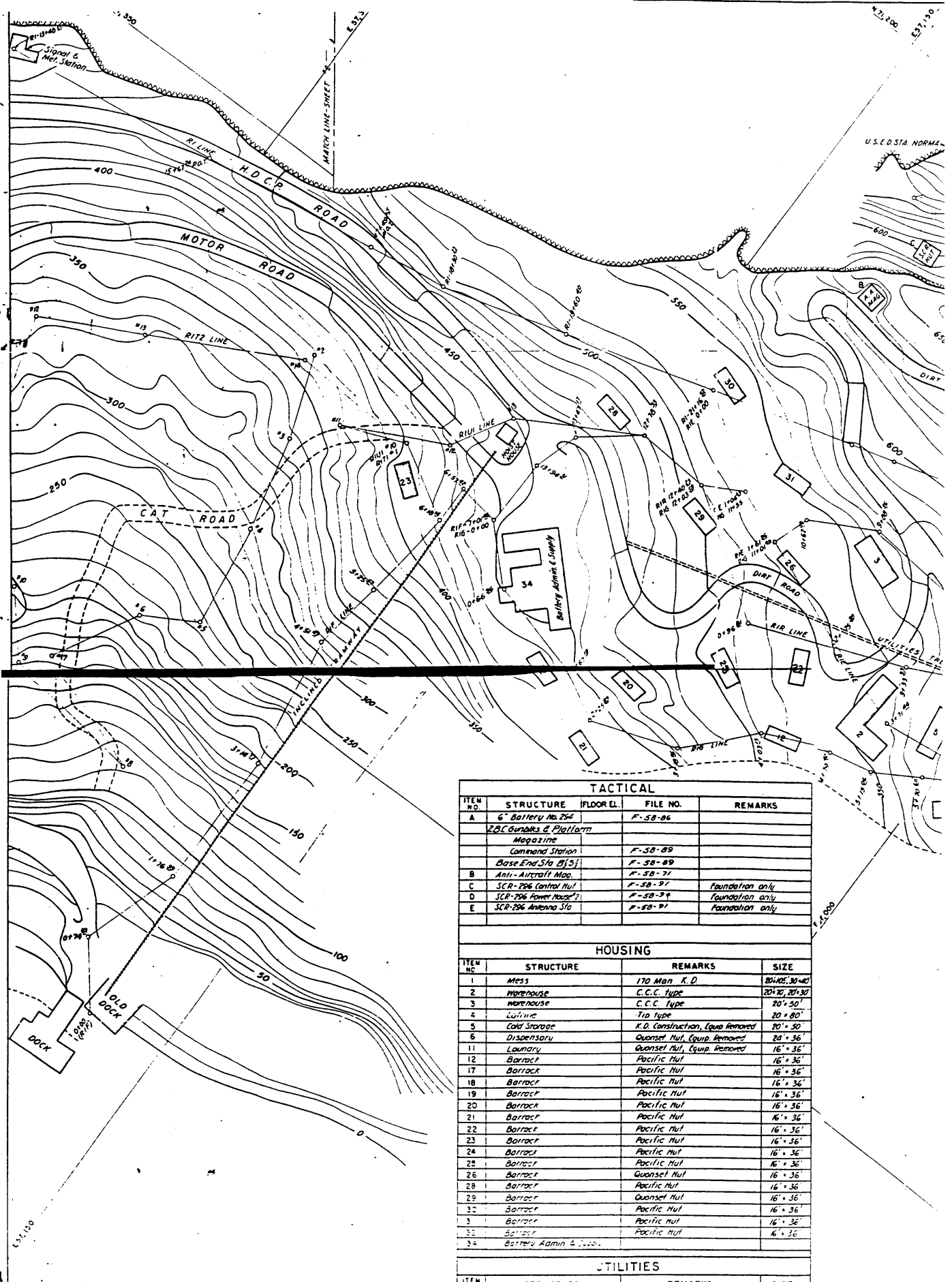
HARBOR DEFENSES OF SEWARD ALASKA
AS CONSTRUCTED SEWARD DRAWING
PLOT PLAN - BATTERY No. 294
RUGGED ISLAND

In 2 Sheets Sheet No. 1 Scale As
 Prepared Under Supervision Of
 District Engineer, Seattle, Wash., 14 Mc

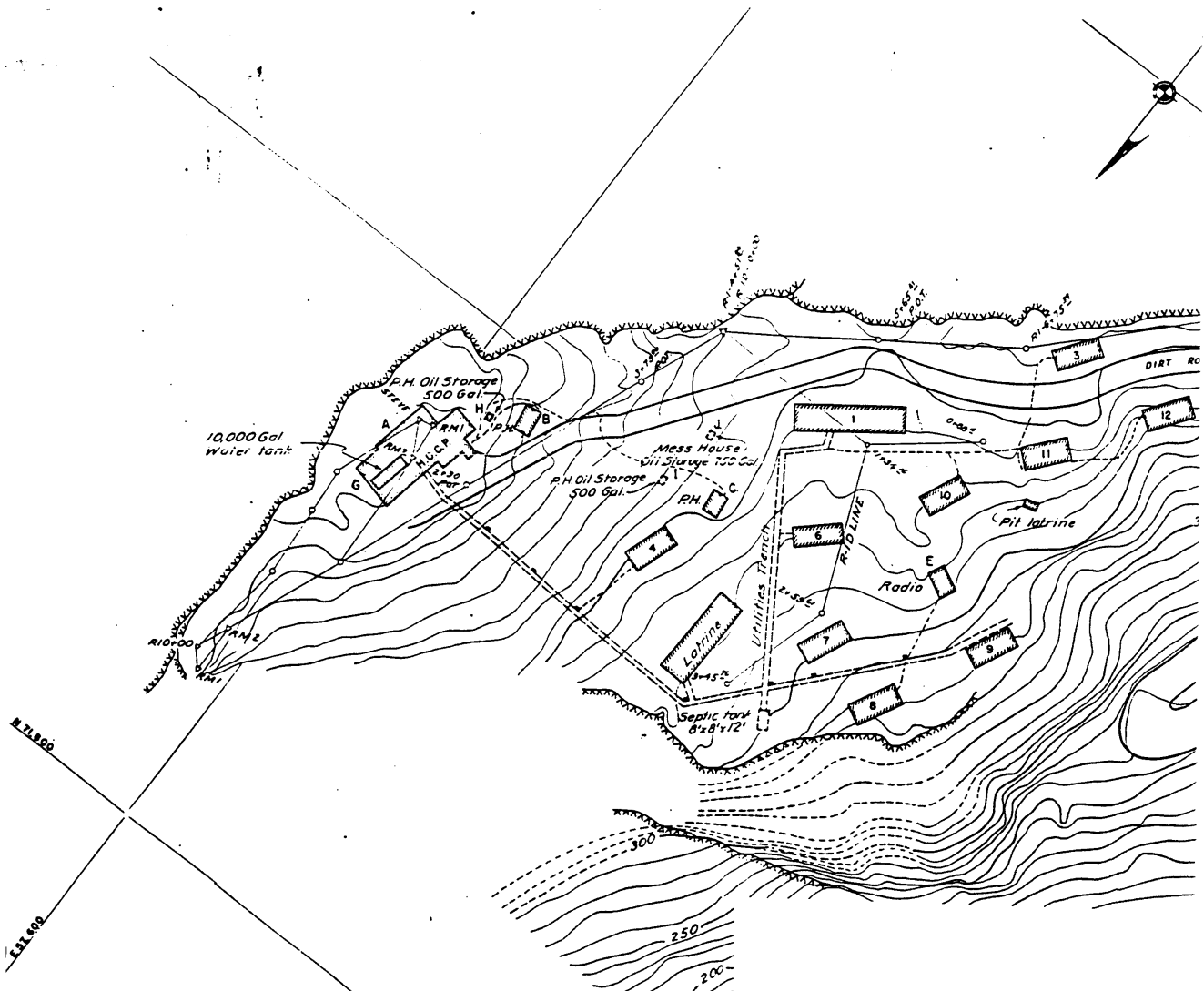
Drawn: _____ Submitted: _____ Approved: _____
 Titled: _____

Refer to Drawing File No. N-63F-312,
 Seattle Office for design

Printed at construction _____



TACTICAL				
ITEM NO.	STRUCTURE	FLOOR EL.	FILE NO.	REMARKS
A	6" Battery No. 254		F-58-86	
	ZBC Bundles & Platform Magazine			
	Command Station		F-58-89	
	Base End Sta. BfSj		F-58-89	
B	Anti-Aircraft Mag.		F-58-91	
C	SCR-206 Control Hut		F-58-91	Foundation only
D	SCR-206 Power House?		F-58-91	Foundation only
E	SCR-206 Antenna Sta		F-58-91	Foundation only
HOUSING				
ITEM NO.	STRUCTURE	REMARKS	SIZE	
1	Mess	170 Man K.D.	20' x 30' x 40'	
2	Warehouse	C.C.C. Type	20' x 30'	
3	Warehouse	C.C.C. Type	20' x 30'	
4	Latrine	Tid Type	20' x 80'	
5	Cold Storage	K.D. Construction, Equip. Removed	20' x 50'	
6	Dispensary	Quonset Hut, Equip. Removed	24' x 36'	
11	Laundry	Quonset Hut, Equip. Removed	16' x 36'	
12	Barrack	Pacific Hut	16' x 36'	
17	Barrack	Pacific Hut	16' x 36'	
18	Barrack	Pacific Hut	16' x 36'	
19	Barrack	Pacific Hut	16' x 36'	
20	Barrack	Pacific Hut	16' x 36'	
21	Barrack	Pacific Hut	16' x 36'	
22	Barrack	Pacific Hut	16' x 36'	
23	Barrack	Pacific Hut	16' x 36'	
24	Barrack	Pacific Hut	16' x 36'	
25	Barrack	Pacific Hut	16' x 36'	
26	Barrack	Quonset Hut	16' x 36'	
28	Barrack	Pacific Hut	16' x 36'	
29	Barrack	Quonset Hut	16' x 36'	
30	Barrack	Pacific Hut	16' x 36'	
31	Barrack	Pacific Hut	16' x 36'	
32	Barrack	Pacific Hut	16' x 36'	
33	Barrack	Pacific Hut	16' x 36'	
34	Battery Admin & Supply		6' x 36'	
UTILITIES				
ITEM NO.	STRUCTURE	REMARKS	SIZE	



TACTICAL

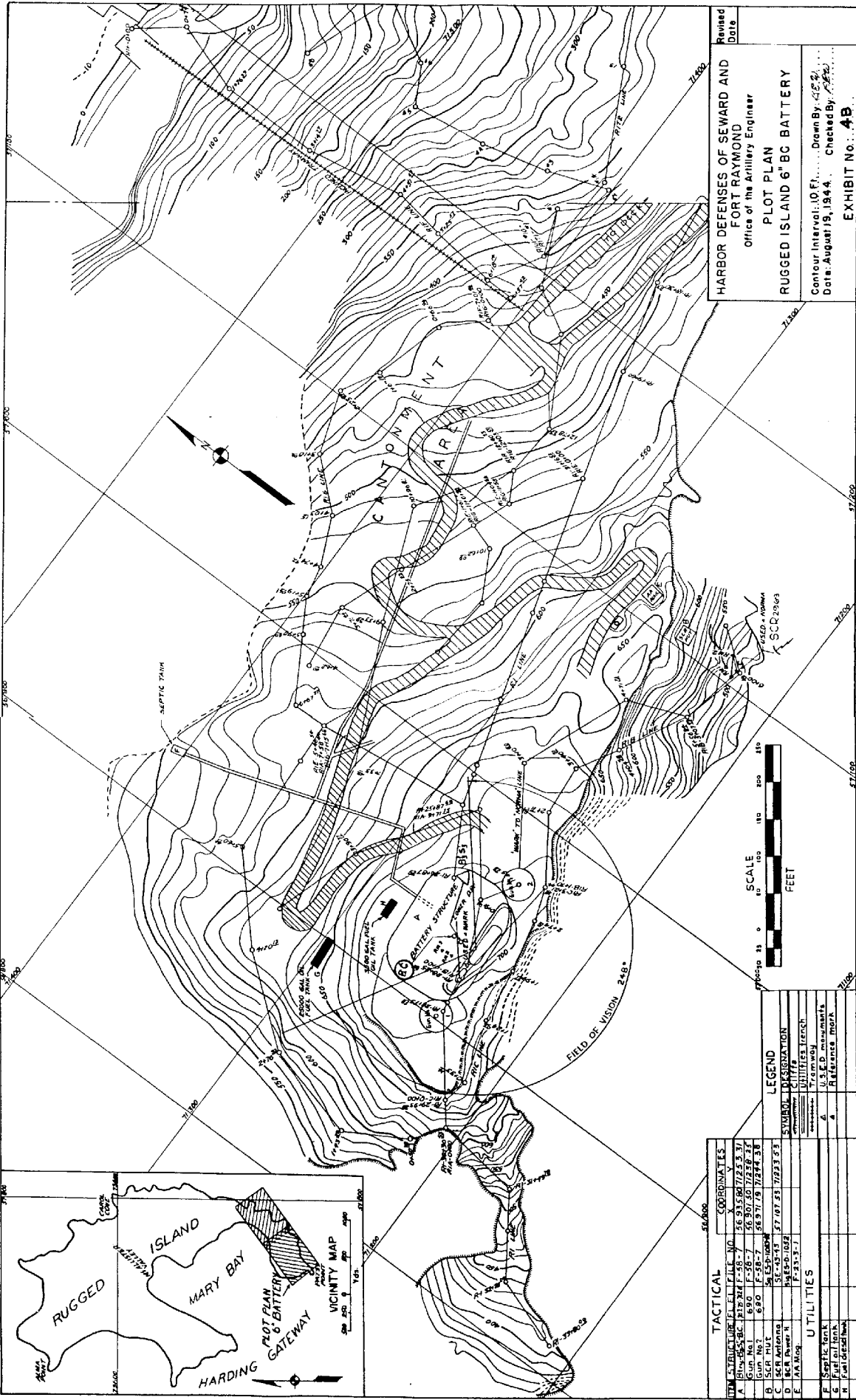
ITEM NO.	STRUCTURE	FLOOR EL.	PILE NO.	REMARKS
A	HDCP/HECP/SSR-30		F-58-61	Equipment Removed
B	HDCP Power House ?		F-58-62	Equipment Removed
C	HDCP Power House ?		F-58-63	Equipment Removed
D	W.R. Tunnel Machine		F	50 Feet Excavated
E	Radio Station		F-58-74	
F	Signal & Met. Sta.		F-58-73	

HOUSING

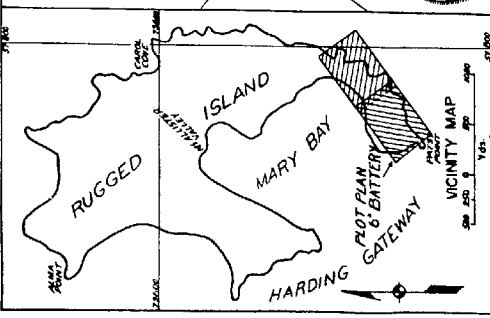
ITEM NO.	STRUCTURE	REMARKS	SIZE
1	Mess Hall	88 Man KD. Equip removed	20' x 80'
3	Barracks	Pacific Hut	16' x 36'
4	Barracks	Pacific Hut	16' x 36'
6	Barracks	Pacific Hut	16' x 36'
7	Barracks	Pacific Hut	16' x 36'
8	Barracks	Pacific Hut	16' x 36'
9	Barracks	Pacific Hut	16' x 36'
10	Barracks	Pacific Hut	16' x 36'
11	Barracks	Pacific Hut	16' x 36'
12	Barracks	Pacific Hut	16' x 36'
	Latrine	Plumbing fixtures Removed	20' x 70'
	Hoist House		
	Dock		
	Inclined Tramway		

UTILITIES

ITEM NO.	STRUCTURE	REMARKS	SIZE
G	Water Storage Tank	10,000 Gal.	
H	Oil Storage Tank	500 Gal.	
I	Oil Storage Tank	500 Gal.	
J	Oil Storage Tank	750 Gal.	



HARBOR DEFENSES OF SEWARD AND
 FORT RAYMOND
 Office of the Artillery Engineer
 PLOT PLAN
 RUGGED ISLAND 6" BC BATTERY
 Contour Interval: 10 Ft. Drawn By: [Signature]
 Date: August 19, 1944. Checked By: [Signature]
 EXHIBIT No. 4B



TACTICAL		COORDINATES	
ITEM	SYMBOL	ELE. FILE NO.	X Y
A	Battery	F-58-7	56 931.687 7223.37
B	Gun	F-58-7	56 931.687 7223.37
C	SCR	F-58-7	56 931.687 7223.37
D	SCR	F-58-7	56 931.687 7223.37
E	SCR	F-58-7	56 931.687 7223.37
F	SCR	F-58-7	56 931.687 7223.37
G	SCR	F-58-7	56 931.687 7223.37
H	SCR	F-58-7	56 931.687 7223.37
I	SCR	F-58-7	56 931.687 7223.37
J	SCR	F-58-7	56 931.687 7223.37
K	SCR	F-58-7	56 931.687 7223.37
L	SCR	F-58-7	56 931.687 7223.37
M	SCR	F-58-7	56 931.687 7223.37
N	SCR	F-58-7	56 931.687 7223.37
O	SCR	F-58-7	56 931.687 7223.37
P	SCR	F-58-7	56 931.687 7223.37
Q	SCR	F-58-7	56 931.687 7223.37
R	SCR	F-58-7	56 931.687 7223.37
S	SCR	F-58-7	56 931.687 7223.37
T	SCR	F-58-7	56 931.687 7223.37
U	SCR	F-58-7	56 931.687 7223.37
V	SCR	F-58-7	56 931.687 7223.37
W	SCR	F-58-7	56 931.687 7223.37
X	SCR	F-58-7	56 931.687 7223.37
Y	SCR	F-58-7	56 931.687 7223.37
Z	SCR	F-58-7	56 931.687 7223.37

LEGEND

SYMBOL	DESCRIPTION
[Symbol]	Tramway
[Symbol]	U.S.E.D. manumarks
[Symbol]	Reference mark
[Symbol]	Utilities trench